

192

VICTORIAN FARMHOUSE



VICTORIAN FARMHOUSE
Scale Model House Kit #192

HOFCO HOUSE, INC.
P.O. Box 103
Woodsboro, Md. 21798

For "Customer Service" phone 800-638-2069 or 301-898-7834!

WELCOME TO HOFCO HOUSE

Congratulations! You have purchased one of today's most advanced architecturally designed house kits available. You may build upon this wise investment a home to be cherished forever. HOFCO HOUSE offers a large selection of building materials which are specially designed to do the job right! Please see your local HOFCO HOUSE Dealer!

HOFCO HOUSE, INC. WARRANTY

HOFCO HOUSE GUARANTEES ALL THEIR PRODUCTS! Every part must meet our high standards of quality before leaving our plant. Our research and development team scans the world market for the finest materials available. Sometimes a substitution is necessary. Any substitution of components will be of equal or better quality. If there is any problem with any of our products, please call or write directly to HOFCO HOUSE and request "Customer Service".

ASSEMBLY INSTRUCTIONS

1-PARTS LIST with approximate measurements

Identify location of parts by matching letters or numbers on photos or diagrams. To aid in identification, letters or names of parts are stamped on some of the parts. Quantity is indicated in "()" parenthesis. If quantity of part is not listed, only one part is included.

Example: Below in the first item "A" on the photo locates the Assembled Foundation & First Floor. There is only one part 22" x 30 1/2", but there are two parts "B" Side Walls 1/4" x 15 3/4" x 28 1/4".

As all measurements are given in inches, the sign (") for inches has been omitted for ease in reading the numbers.

- | | | | |
|----|---|---|--|
| A | Assembled Foundation & First Floor
22 x 30 1/2 | E | Front Wing Wall
3/8 x 11 3/4 x 19 1/4 |
| A1 | Assembled Porch Foundation
5 1/8 x 20 3/4 | F | Triangle Wing Wall
3/8 x 11 1/2 x 6 7/8 |
| B | Side Walls [one with Porch Roof Support]
(2) 1/4 x 15 3/4 x 28 1/4 | G | Second Floors
3/8 x 6 1/4 x 11
3/8 x 15 1/2 x 30 1/4 |
| C | Front Wall
1/4 x 19 1/4 x 20 3/8 | H | Attic Floors
3/8 x 6 1/4 x 11
3/8 x 15 1/2 x 30 1/4 |
| D | Side Wing Walls [one with Porch Roof
(2) 1/4 x 6 x 20 3/8 Support] | | |

I Porch Floors & Ceilings
 1/4 x 5 1/16 x 15 3/4
 1/4 x 5 1/16 x 15 3/4 w/support piece
 (2) 1/4 x 5 1/16 x 24 1/4

J First Floor Partitions
 3/8 x 9 5/8 x 11
 3/8 x 9 5/8 x 15 1/2

K Second Floor Partitions
 3/8 x 9 5/8 x 11
 3/8 x 9 5/8 x 15 1/2
 3/8 x 9 5/8 x 15 1/2 two doorways

L Attic Partition
 1/4 x 7 5/8 x 10 1/2

M Front & Back Top of Roof
 1/4 x 2 1/2 x 31 3/4
 1/4 x 12 1/8 x 31 3/4

N Back Roof Flap
 1/4 x 9 1/2 x 31 3/4

O Left Wing Roof
 1/4 x 9 x 12 1/4

P Right Wing Roof
 1/4 x 9 x 12 1/4

Q Side Porch Roof
 1/4 x 6 x 22

R Front Porch Roof
 1/4 x 6 x 25

S Porch Roof Supports
 1/4 x 1 1/2 x 15 3/4
 1/4 x 1 1/2 x 19 3/8

T Chimney
 3/4 x 2 x 18 1/2
 3/4 x 4 x 9 1/16

U Porch Post & Bases (5)

V First Floor Porch Edge Trim
 V1 3/16 x 1/4 x 2 1/4
 V2 3/16 x 1/4 x 5 1/4
 V3 3/16 x 1/4 x 16 1/4
 V4 3/16 x 1/4 x 20 3/4
 Ceiling Porch Edge Trim
 V5 3/16 x 2 1/4 x 5 1/4
 V6 3/16 x 5/8 x 20 3/4
 V7 3/16 x 5/8 x 24 1/2

W Side Wall Trim
 W1 (2) 3/16 x 7/16 x 10 7/8
 W2 (2) 3/16 x 7/16 x 21
 W3 (2) 3/16 x 5/8 x 20 1/2
 First Floor Porch Wall Trim
 W4 (3) 3/16 x 7/16 x 9 1/16
 W5 3/16 x 5/8 x 9 1/16
 Second Floor Wall Trim
 W6 3/16 x 7/16 x 8 1/4
 W7 3/16 x 5/8 x 8 1/4
 W8 3/16 x 7/16 x 8 3/4 left
 W8A 3/16 x 7/16 x 8 3/4 right
 W9 (2) 3/16 x 7/16 x 9 3/8

W Front Wall Wing Trim
 W10 (2) 3/16 x 3/8 x 7/8
 W11 1/4 x 5/8 x 5/8
 W12 3/16 x 5/8 x 1 1/4
 W13 3/16 x 5/8 x 1 1/2
 W14 3/16 x 7/16 x 8 3/8
 W14A 3/16 x 7/16 x 8
 W15 3/16 x 5/16 x 10 7/8
 W16 (2) 3/16 x 5/8 x 19 3/8
 X Side Roof Edge Trim
 X1 3/16 x 7/16 x 1
 X2 3/16 x 7/16 x 2 5/8
 X3 (2) 3/16 x 7/16 x 9 5/8
 X4 (2) 3/16 x 7/16 x 10
 X5 3/16 x 7/16 x 11
 X6 3/16 x 7/16 x 12 1/2
 Roof Bottom Edge Trim
 X7 3/16 x 5/8 x 6 1/4
 X8 3/16 x 5/8 x 6 1/4
 X9 3/16 x 5/8 x 19 1/8
 X10 3/16 x 5/8 x 31 3/4

Y Porch Steps
 1 1/2 x 6
 Gingerbread Trim (4)
 Second Floor Newel Post
 #1 (2) 3/8 x 3/8 x 3 1/2
 Second Floor Spacer Post
 #2 3/8 x 3/8 x 3 1/2
 Attic Floor Newel Post
 #3 (2) 3/8 x 3/8 x 3
 Attic Floor Spacer Post
 #4 3/8 x 3/8 x 3
 Porch Newel Post
 #5 (4) 3/8 x 3/8 x 3 3/4
 Second Floor Rails
 #6 2 3/4 x 3
 #7 2 3/4 x 7 1/4
 Attic Floor Rails
 #8 2 3/4 x 3
 #9 2 3/4 x 7
 Porch Rails
 #10 (2) 2 3/4 x 1 5/8
 #11 2 3/4 x 4
 #12 (2) 2 3/4 x 6 1/2
 #13 (2) 2 3/4 x 9 3/4
 Stairways (2)
 Second Floor Stairway Rail
 Attic Floor Stairway Rail with Newel
 Post Top cut off
 Hinges (6)
 Magnetic Catch
 Nail Bag
 Finishing Nails - 1 1/2" (10)
 Sandpaper
 Instructions

Supplies and Tools Needed

Standard Wood Putty

Hammer

Screwdriver

Small Nail-set or Punch

Ruler and Square

Pliers

Wood Chisel

Pencil

Paper Towels

Standard Woodworking Glue

Silicone Rubber (Optional)

Customized Accessory List

Clapboard Siding to cover 1350 to 1400 square inches

Roof Shingles to cover 1200 to 1250 square inches

Brick or Stone to cover foundation - 300 to 350 square inches

Interior Flooring for 3 floors to cover 1600 to 1650 square inches

Porch Flooring to cover 250 square inches

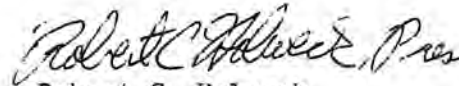
2-General Directions

Read through each assembly direction and examine the corresponding photo thoroughly before applying glue or nailing. This allows you to become familiar with the construction techniques.

Apply glue moderately to all parts to be joined together including those that are nailed. Nail wherever you think necessary. Always keep nails straight! Don't worry about any exposed nails in your house. After the glue has dried, punch the nails out! Glue alone will secure the two parts. The main function of the nails is to hold the two parts together while the glue dries.

Follow the letters, numbers, diagrams, and photos to be sure you are using the correct parts!

Read the "Time Saver Assembly Tips for the Customized House" before beginning the basic construction. You will save yourself time and money in later improvements. Assemble your house in the order suggested for a professional collectors item. Have patience and your efforts will be forever rewarded!



Robert C. Holweck
President

3-Assembled Porch Foundation - Part A1 Photo - #1, #2, #3, #4, & #5

A-Glue and nail with 1 1/2" finishing nails to Part A Assembled Foundation and First Floor. Make sure it is aligned even and square!

4-Front Walls - Part C Photo - #6, & #7

Note: It is helpful to set pieces in place before applying glue to become familiar with the instructions.

A-Place front wall with Porch Roof Support facing to front of house and even with sides of the first floor.

B-Apply glue to front edge of first floor and set front wall into position. Be certain that both ends are flush with the first floor for proper alignment.

C-Nail using 3/4" wire brads. When nailing, it is helpful to have someone hold a side panel in place for squaring.

5-Side Wall with Porch Roof Support - Part B Photo - #8, #9, & #10

A- Apply glue to side edge of first floor and front wall.

B-Place side wall so that the edges are flush with the front wall and back edge of first floor.

C-Nail using 3/4" wire brads at first floor and 1/2" wire brads on the front wall. Be positive nails are straight!

6-Side Wing Wall with Porch Roof Support - Part D Photo - #11, #12, & #13

A-Place Side Wing Wall with Porch Roof Support facing towards porch and flush with front wall.

B-Apply glue to all contacting edges and set in place. Be certain corner is vertically square by using the second floor "G" as a "square".

7-Side Wall & Side Wing Wall without Porch Roof Support - Parts B & D Photo - #14, #15, & #16

A-On the left side position side walls "B" flush with the rear of the first floor and position side wing wall "D" flush against part "B" allowing a slight overhang of first floor.

B-Glue and nail with 3/4" wire brads along first floor.

8-Second Floors - Part G Photo - #17, #18, #19, #20, #21, & #22

Note: Tap Nails in straight to prevent splitting floor!

A-Place a partition against the front and side walls of house. The partitions will serve as temporary support and as a height gauge.

B-Apply glue on three sides of floor.

C-Slide in the second floor from the back with the stairway opening somewhat towards the right side. Floor at back of house should measure 4 3/4" deep. Floor at front of house should measure about 3 1/4" deep.

D-Nail in place using 3/4" wire brads or 1" paneling nails.

E-Using partitions as a height gauge place the smaller second floor snug against the larger second floor and allow a slight recess of the front walls.

9-Attic Floors - Part H Photo - #23, #24, #25, #26, & #27

A-Place a partition against the front and side walls of house. The partitions will serve as temporary support and as a height gauge.

B-Apply glue on three sides of floor.

C-Slide in the attic floor from the back with the stairway opening to the porch side. Floor at back of house should measure about 3 1/2" deep. Floor at front of house should measure about 4 3/4" deep.

D-Nail in place using 3/4" wire brads or 1" paneling nails.

E-Using partitions as a height gauge place the smaller attic floor snug against larger attic floor and allow a slight recess of the front walls.

10-First Floor Partitions - Parts J Photo - #28, #29, #30, & #31

Note: Use your ruler and square on all partitions! It is helpful to set pieces in place before applying glue to become familiar with the instructions!

A-Glue all contacting edges of the smaller partition and place about 10" from the back with the doorway towards the stairway opening.

B-Glue larger partition to the right of the stairway opening with doorway towards the front and flush with smaller partition. Nail where necessary with 3/4" wire brads.

11-Second Floor Partitions Parts K Photo - #32, #33, & #34

A-Glue all contacting edges of the smaller partition and place about 8" from the back.

B-Glue larger partition with two doorways to the right of the stairway with "open" doorway towards the front.

C-Glue final partition in place 3 1/2" to the left of the stairway opening with doorway toward the front. Apply pressure and support from below with a porch post and a piece of 1/4" plywood until glue has dried.

D-Nail where necessary with 3/4" wire brads.

- 12-Porch Floors - Parts I Photo - #35, #36, & #37
 A-Set parts in place to become familiar with installation.
 B-Glue and nail with 3/4" wire brads.
- 13-First Floor Porch Wall Trim - Parts W4 & W5 Photo - #38, & #39
 A-Glue and nail with 1/2" wire brads as shown in photos.
- 14-Chimney - Part T Photo - #39 & #40
 A-Center wider chimney part between porch roof supports.
 B-Glue and nail with 3/4" wire brads nailing from "inside out".
- 15-First Floor Porch Edge Trim & Porch Steps - Parts V1, V2, V3, V4 & Y Photo - #41, #42, #43, & #44
 Note: Glue and nail all trims with 1/2" wire brads.
 A-Select all the first floor edge trim. Using the photos figure out where the pieces fit around the edge of the porch. The lengths of the parts make it easy to find the correct placement.
 B-Then glue and nail the trim flush with the top edge of the porch.
 C-Place Porch Steps flush against V1. Glue and nail with 1" paneling nails.
- 16-Nail-setting of Porch Area Photo - #45
 A-Inset nails with a nail punch.
 B-Check inside of house for any exposed nails. Punch out and remove any nails that are exposed.
 C-Fill holes with standard wood putty.
 D-Sand smooth with sandpaper. Be sure to sand with the grain!
- 17-Front and Back Top of Roof - Part M Photo - #46, & #47
 A-Position roof on house walls to become familiar with the proper alignment.
 B-Apply glue to all contacting edges.
 C-Set in place and nail with 3/4" wire brads.
- 18-Triangle Wing Wall - Part F Photo - #48
 Note: Do not nail into attic floor as this will curve the wall inward!
 A-Place triangle wing wall flush with the top edge of the right and left side wing walls to allow roof to lay evenly.
 B-Glue and nail through triangle wing wall and into side wing walls with 3/4" wire brads. There will be an overhang of about 5/8" below the attic floor. This allows the front wing wall E to open properly.
- 19-Left and Right Wing Roof - Parts O & P Photo - #49, #50, & #51
 A-Lay both sections of roof in place butting top angles firmly together at peak.
 B-Remove and apply glue to all contacting parts.
 C-Replace and again align in place. Nail with 3/4" wire brads along sides of roof and 1/2" wire brads across peak.
- 20-Back Roof Flap - Part N Photo - #52, #53, & #54
 A-Line roof flap evenly and position hinges.
 B-Punch hinge holes with nail.
 C-Screw in place.
- 21-Assembling Porch Posts - Parts U Photo - #55
 A-Apply glue to the flat end of the 3 inch long square post section.
 B-Center post base on post.
 C-Press firmly together and nail with 3/4" wire brads.
- 22- Porch Ceilings - Parts I Photo - #56, #57, & #58
 A-Sand porch area to prepare for placement of porch ceilings and posts.
 B-Set parts in place as shown in photo. Make sure the ceiling support is on top. Use the porch posts to temporarily hold the porch ceilings in place.
 C-Glue and nail each porch ceiling with 3/4" wire brads.

23-Porch Posts - Parts U Photo - #57, #58, #59, & #60

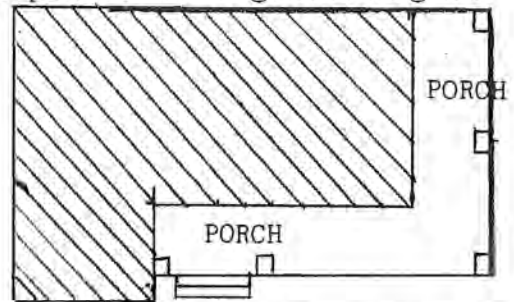
Important! Porch posts must be evenly aligned for later installation of porch railing!

A-Glue all contacting edges of the porch posts.

B-Place a post at each edge flush with the porch floor edge checking the photos and the diagram below.

□ PORCH POST BASE PLACEMENT

Porch post to be spaced evenly on both sides of porch steps.



C-Nail at an angle through post base at bottom using 3/4" wire brads. Check for squareness!

D-To nail top of post, nail through porch trim using 1" paneling nails.

E-Repeat above procedures for each post!

24-Ceiling Porch Edge Trim - Parts V6 & V7 Photo - #61, & #62

A-Use same procedures as in Step 15.

25-Porch Roof Supports - Parts S Photo - #63, & #64

A-Glue and nail with 1/2" wire brads as shown in photo.

26-Front and Side Porch Roofs - Parts Q & R Photo - #65, #66, #67, & #68

A-Glue and nail with 1/2" wire brads as shown in photo.

27-Ceiling Porch Edge Trim - Part V5 Photo - #69, & #70

A-Glue and nail with 1/2" wire brads as shown in photo.

28-Chimney - Part T Photo - #71

A-Center narrow chimney part at peak of roof. Glue and nail with 3/4" wire brads nailing from "inside out".

29-Attic Partition - Part L Photo - #72

A-Glue partition on all contacting edges and place it on the attic floor dividing the area to meet your needs!

30-Side Wall Trim - Part W3 Photo - #73, & #74

A-To support hinges apply glue generously to side wall trim flush with the front edge of the side wing walls.

B-Nail with 1/2" wire brads.

31-Side Wall Trim - Parts W1 & W2 Photo - #75, & #76

A-Glue and nail with 1/2" wire brads Parts W2 flush with front and back of Part B Side Wall.

B-Glue and nail with 1/2" wire brads Parts W1 under the roof.

32-Second Floor Wall Trim - Parts W8, W8A, W9 Photo - #77

A-Use same procedures as in Step

33-Second Floor Wall Trim - Parts W6 & W7 Photo - #78

A-Glue and nail with 1/2" wire brads as shown in photo diagram.

34-Front Wing Wall - Part E Photo - #79, #80, & #81

A-Position front wing wall with about 1/16" space above foundation.

B-Position three hinges evenly across the trim starting about 3/4" from both ends. Center the middle hinge.

C-Punch screw holes with a nail and screw hinges in place.

- 35-Front Wall Wing Door Trim - Parts W15 & W16 Photo - #82, #83, #84, & #85
A-Glue and nail with 1/2" wire brads as shown in photo diagram.
- 36-Front Wall Wing Trim Parts W10, W11, W12, W13 & W14, W14A Photo - #86, #87, #88, #89, #90, #91, #92, #93, & #94
A-Glue and nail with 1/2" wire brads as shown in photo diagram.
- 37-Magnetic Door Catch Photo - #95
A-Screw catch under second floor of wing near porch. See photo diagram.
B-Screw plate on inside front wing wall E positioning to match catch.
- 38-Roof Bottom Edge Trim - Parts X7, X8, X9 & X10 Photo - #96, #97, #98, & #99
A-Select and place trims with angled edge against roof bottom edge before gluing to become familiar with placement.
B-Glue and hold in place with masking tape until dry.
- 39-Side Roof Edge Trim - Parts X1, X2, X3, X4, X5 & X6 Photo - #100, #101, & #102
A-Select and place trims at the edge of the roof extending beyond the roof bottom edge trim.
B-Glue and nail in place with 1/2" wire brads.
C-Sand smooth the excess overhang even with roof bottom edge trim.
- 40-Nail-setting Photo - #45
A-Inset nails with a nail punch.
B-Check inside of house for any exposed nails. Punch out and remove any nails that are exposed.
C-Fill holes with standard wood putty.
D-Sand smooth with sandpaper. Be sure to sand with the grain of the wood.
- 41-Gingerbread Trim Photo - #103
A-Cut and place on roof bottom and side roof edge trim as shown in photos.
B-Glue and hold temporarily in place with masking tape.
- 42-Porch Rails & Porch Newel Posts - Parts #5, #10, #11, #12 & #13 Photo - #104, #105, #106
Note: If you use Silicone Rubber to glue your stairways, railings, windows, or doors, they can be removed at a later time without much difficulty. Silicone Rubber is available at most hardware stores.
A-Some adjustments may be needed in railing lengths. Sand or cut if necessary.
B-The photo diagrams show the placement of the railing by the numbers on the parts list.
C-Glue assembled railing sections in place.
D-It is helpful to use masking tape to hold rails in place until dry.
- 43-Stairways Photo - #107, #108, #109, #110, #111, & #112
Note: It is easier to decorate the interior before the installation of the stairways.
A-Apply glue to side and bottom of stairways and the edge of the top floor.
B-Set in place and allow to dry.
- 44-Stairway Railing - Parts #6, #7, #8, #9, newel posts & spacer newel posts Photo - #108, #109, #110, #111, & #112
Note: Attic newel posts are flat on top for a realistic appearance.
A-Assemble one spacer newel post to one end of rail #7 and #9.
B-Assemble newel post to both ends of rail #6 and #8.
C-Glue railing #6 and #7 about second floor stairway opening.
D-Glue railing #8 and #9 about attic stairway opening.
- 45-Windows and Doors Photo - #113
Note: Paint windows and doors before you glue them in place or glue them in very lightly so you can remove them at a later time!
A-Lay house on back.
B-Glue lightly the back of the window and door frames and position them in place. Do not nail! Allow to dry!

HOFCO® HOUSE, INC.

10822 WOODSBORO ROAD, P.O. BOX 103

WOODSBORO, MARYLAND 21798

For ordering, phone 800-638-2069, or mail order form to above address.

"TIME SAVER ASSEMBLY TIPS FOR THE CUSTOMIZED HOUSE"

SIDING: #1201 Single Clapboard Siding Strips

It is easier to install the siding before you install the windows, doors, and porch roof. When the siding has reached the porch roof supports, install the roof and continue assembling your house.

ROOF COVERING: #1302 Square Butt Shingles for Colonial Styles...#1304 Fishscale for Victorian Styles...#1306 Octagon for Federal and Victorian Styles

You can install your cedar shingles at anytime during the construction of your house. To give a professional touch to your roof add roof molding and cap.

#1207 Roof Bottom Edge Molding...#1211 Pine Molding Strips for roof ends
...#1221 Cedar Roof Cap for finishing peak of roof

FLOOR COVERING: #1231 Walnut...#1232 Oak...#1233 Pine...#1234 Cherry

You may use hardwood flooring inside and masonry on the porches or any combination you wish. As glue will not adhere to masonry surfaces, you must work around the porch and railing posts or use a special glue. Also, you should consider the effect the added height or lack of it would do to the roof or other areas of the house!

MASONRY: Brick, stone, and stucco may be applied on the foundation at anytime after you have installed the porch steps. The porch floor overhangs about 3/16" to allow for any masonry work. It is easier to install masonry work to the sides and front of the chimney before you glue and nail it to the house. Then you can finish the back side around the roof peak after the chimney is installed.

DUSTPROOFING: #1270 and #1271 Plexi-glass Brackets

Plexi-glass is used to provide a see-through cover for the back of your house. Your local hardware store will cut the plexi-glass to your precise measurements. Use HOFCO HOUSE Plexi-glass Brackets for ease in removing and replacing your covering. The Plexi-glass slides in from the top. Install this special bracket before measuring the Plexi-glass for exact size. This cover gives dust-free and security protection for display.

PAINTING: Regular exterior latex primer and latex house paint in the colors of your choice is used. It is convenient to apply the paint with a small one-inch brush for larger areas and a smaller art brush for fine detailed painting. First, prime all areas that are to be painted. Then sand the areas with fine sandpaper...before painting the finishing coat in the color of your choice. Don't forget to paint the interior ceilings before wallpapering and the installation of any special floor covering.

ORDER OF DECORATION: If possible decorate the interior of your house in this order!

1-Install the electrical lighting using a wiring kit. 2-Paint your ceilings.
3-Lay and finish your hardwood flooring. 4-Stain or paint all interior trim including windows, doors, stairways, railings, and all moldings before gluing in place. 5-Wallpaper your walls. 6-Glue finish trims in place.

ADDITIONAL HOFCO HOUSE ACCESSORIES:

2003	Colonial "Transit" Door
2012	Victorian "Oval Panel" Door
2022	Colonial "Panel-lite" Door
2032	French Door
2102	Colonial Style Non-working window
2112	Colonial Style working window
2122	Victorian Style Non-working window
2132	Victorian Style working window
2141	Octagon Window

2301	Assembled Left Hand Stairway (without railing)
2311	Assembled Stairway Railing (fits 2301)
2402	Short Newel Post (size 2 3/4" length x 7/16" width)
2411	Porch Post (size 11" length x 1/2" width)
2441	Wide Assembled Railing (24" L x 2 3/4" W)
2451	Narrow Assembled Railing (24" L x 1 3/4" W)
2421	Fancy Dentel Trim (24" L x 3/8" W)
2431	Narrow Gingerbread Trim (24" L x 3/8" W)



HOFCO® HOUSE, INC.

**P. O. Box 103, 10822 Woodsboro Road
Woodsboro, Maryland 21798**

Phone: (301) 898-7834



192

VICTORIAN FARMHOUSE

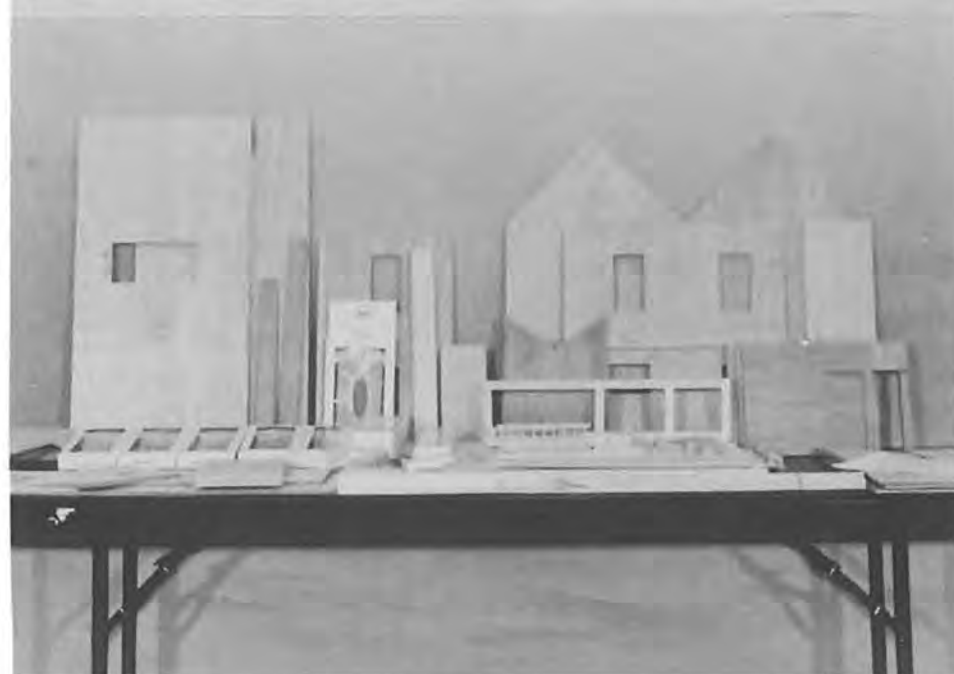
**SIDING: 6 Pkgs Product
No. 1201**

**SHINGLES: 4 Pkgs Products
No. 1302 or 1306**

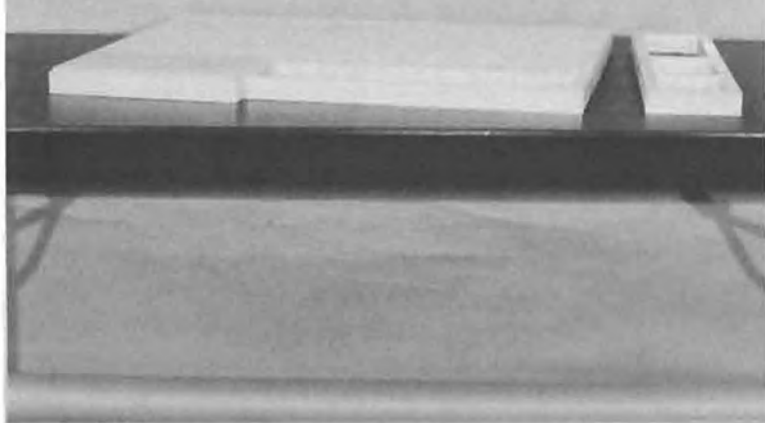
**Flooring: 5 Pkgs Products
No. 1231 - 1234**

Interior Doors: 5 #2041

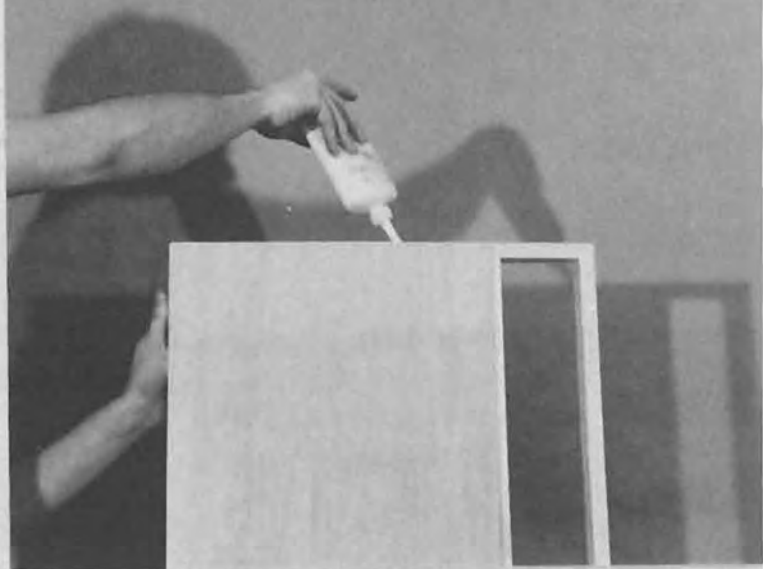
**DIMENSIONS are 24" deep, 37"
length, & 32" height. Shipping
weight is 42 pounds.**



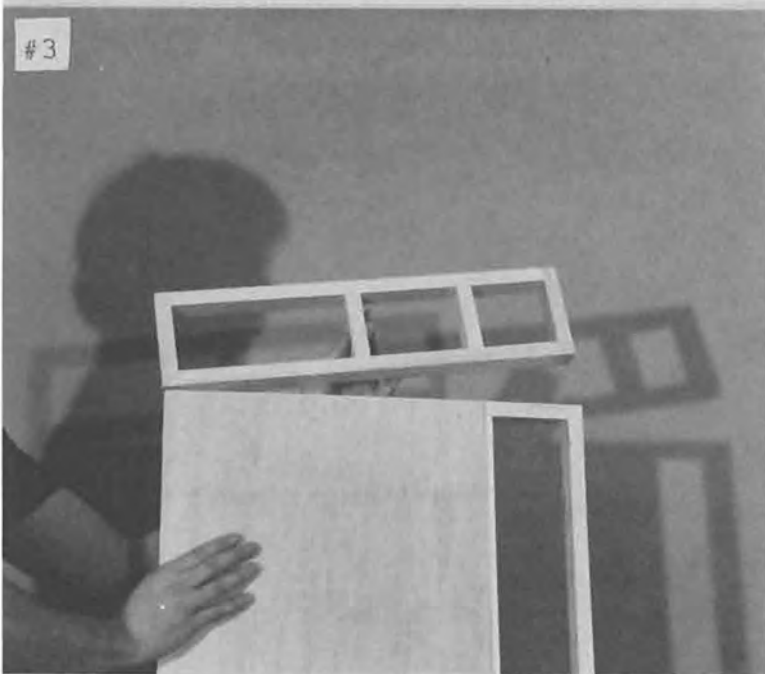
#1



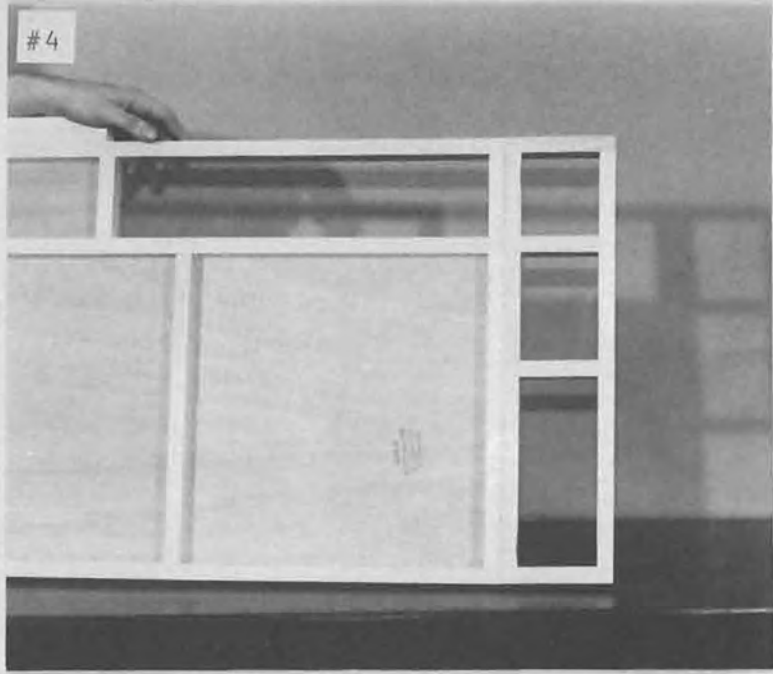
#2



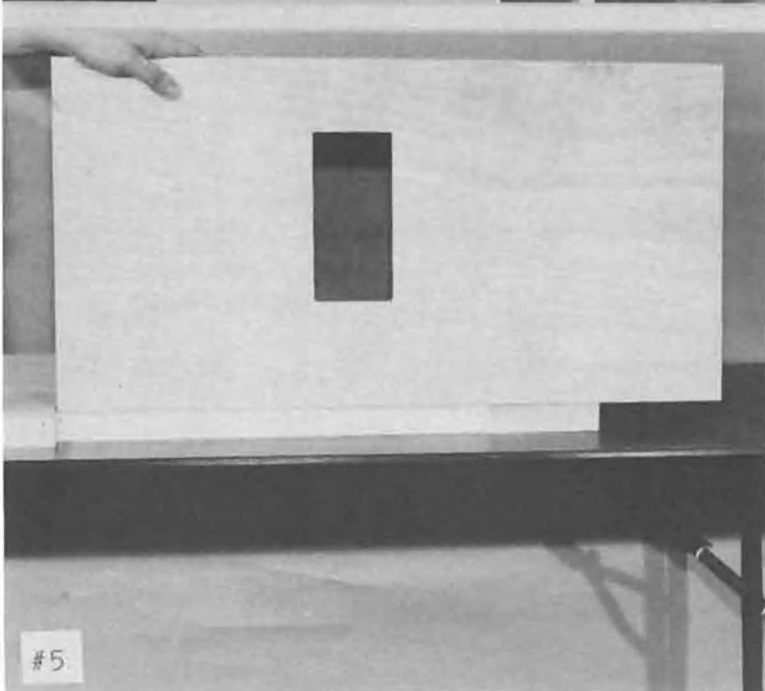
#3



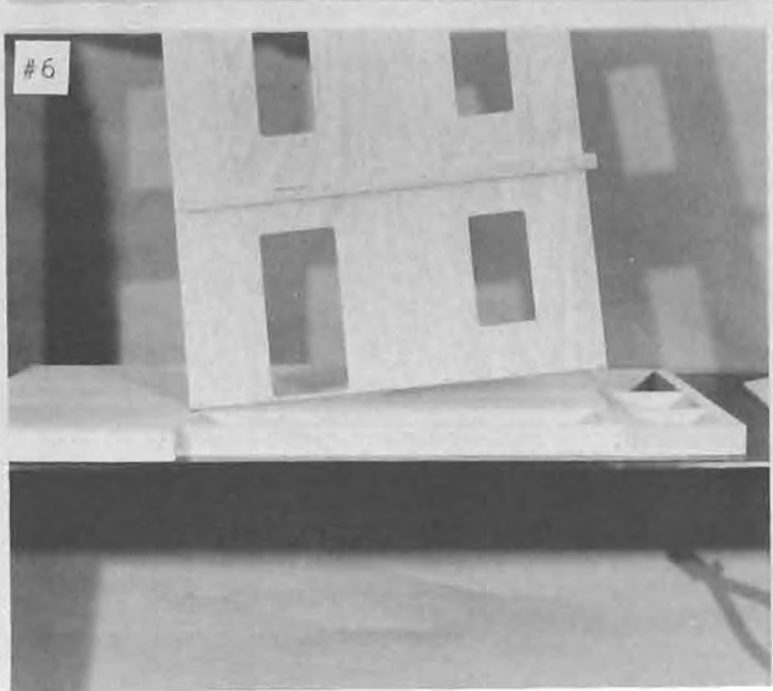
#4



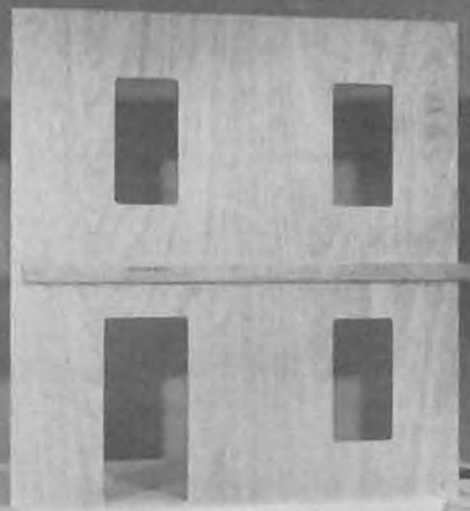
#5



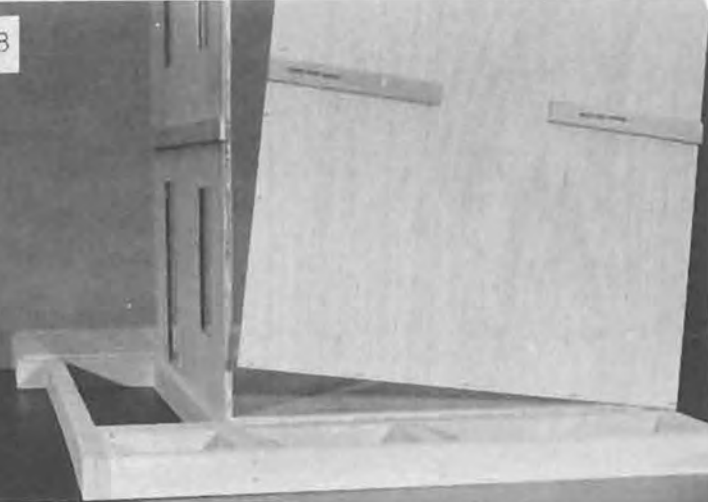
#6



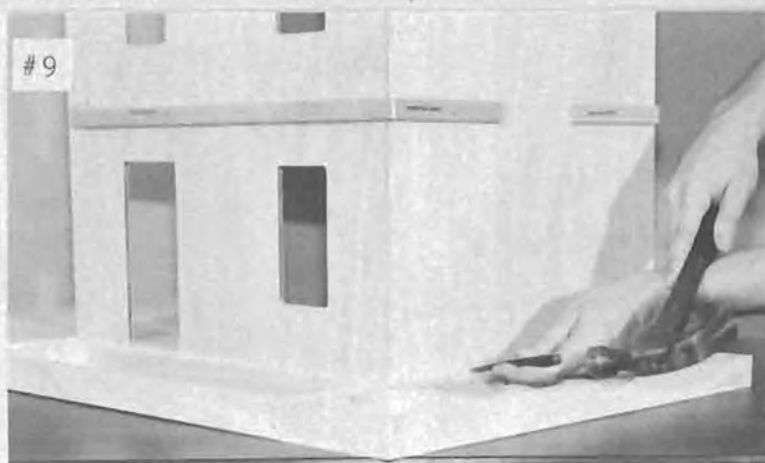
#7



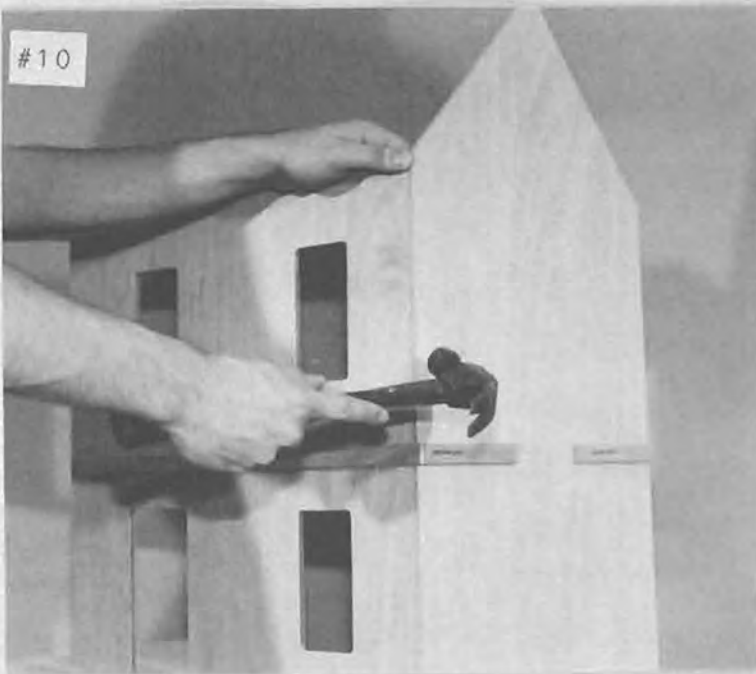
#8



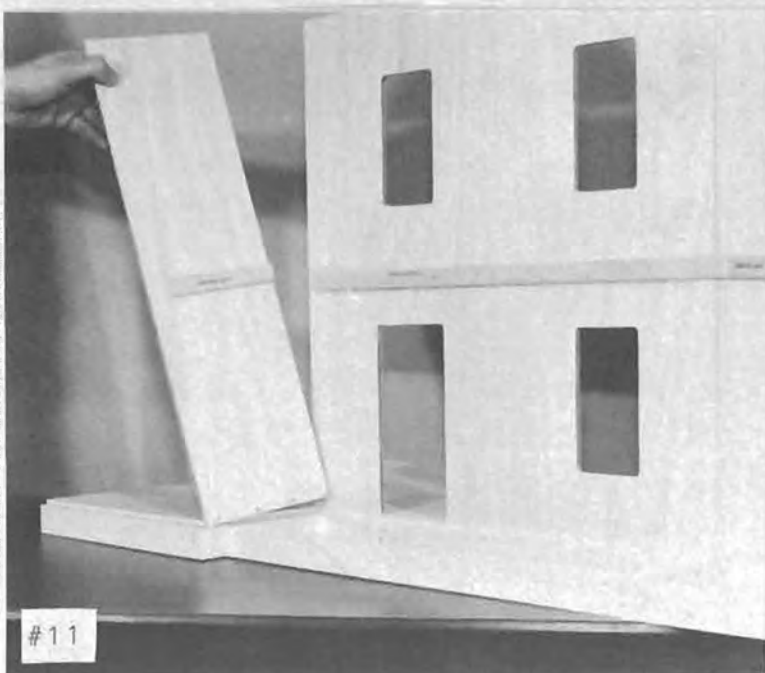
#9



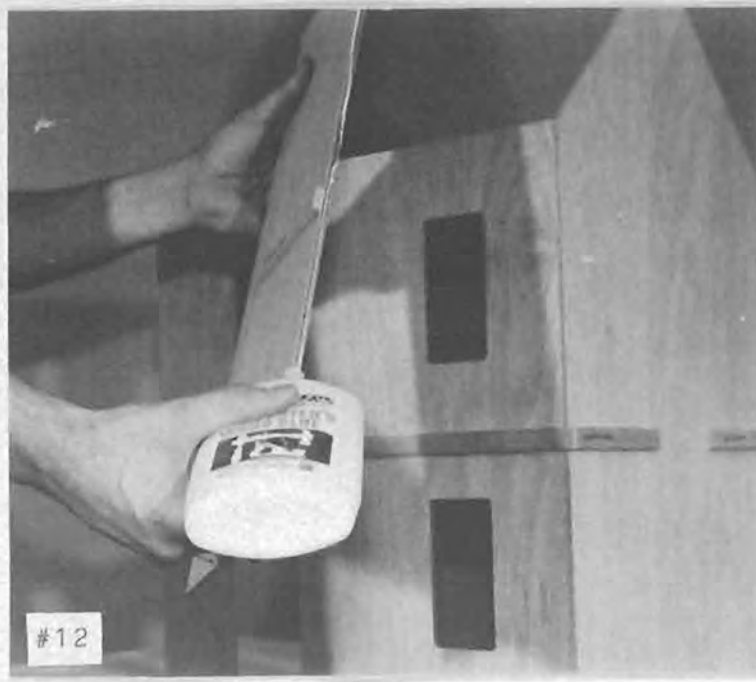
#10

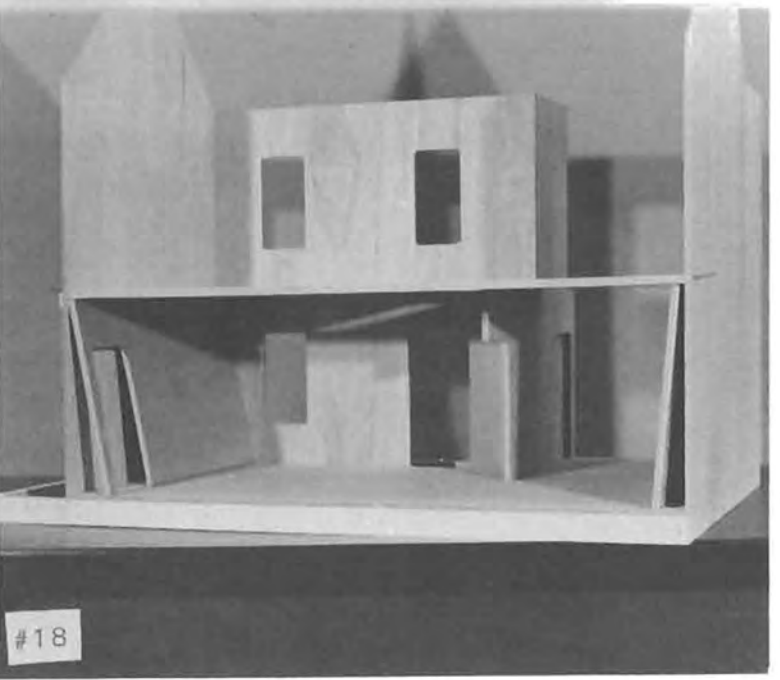
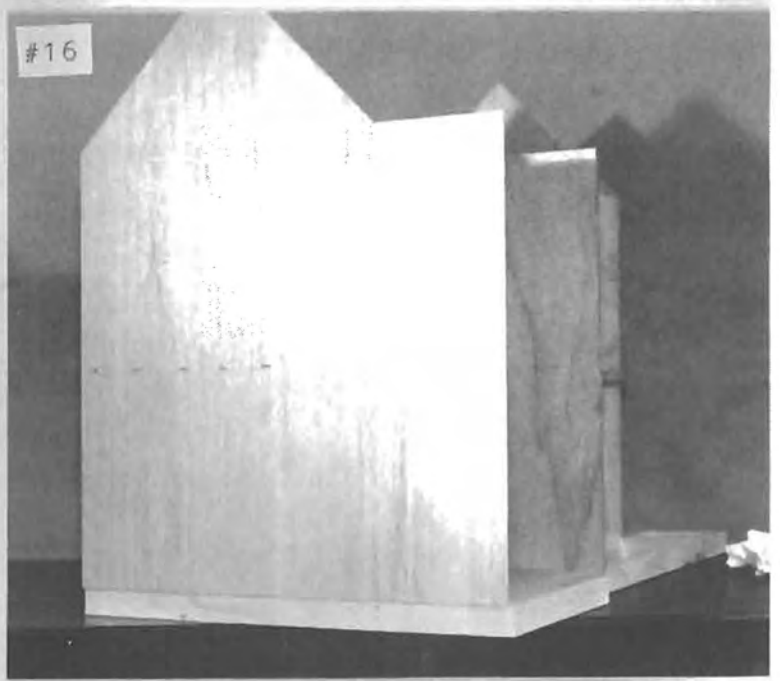
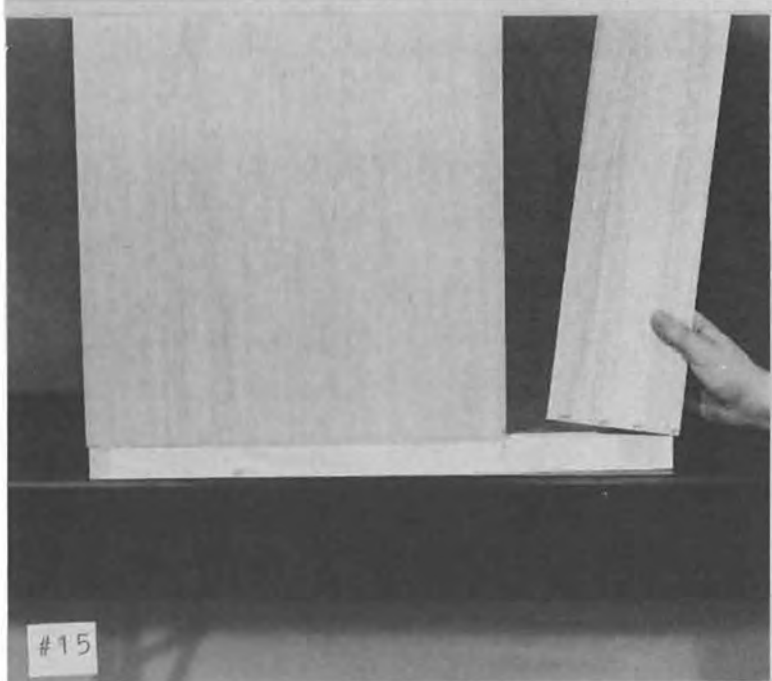
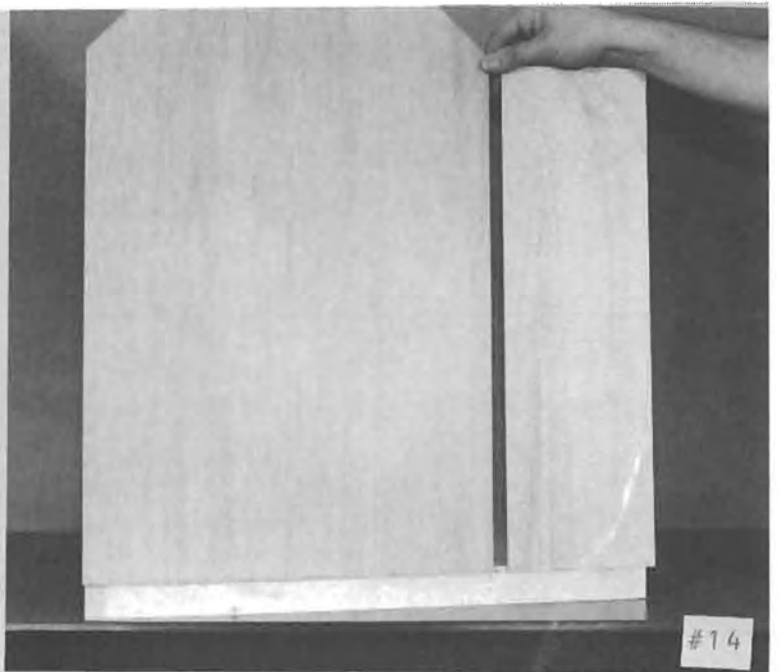
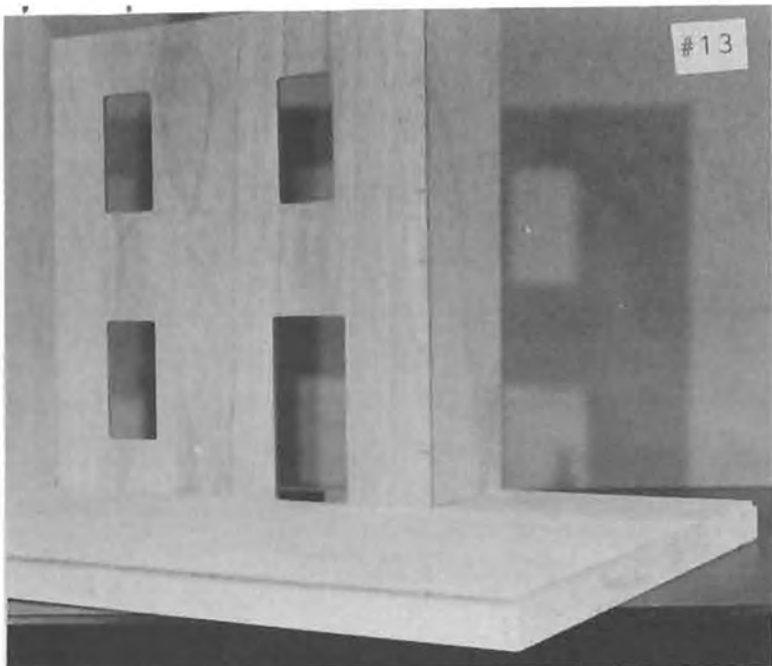


#11

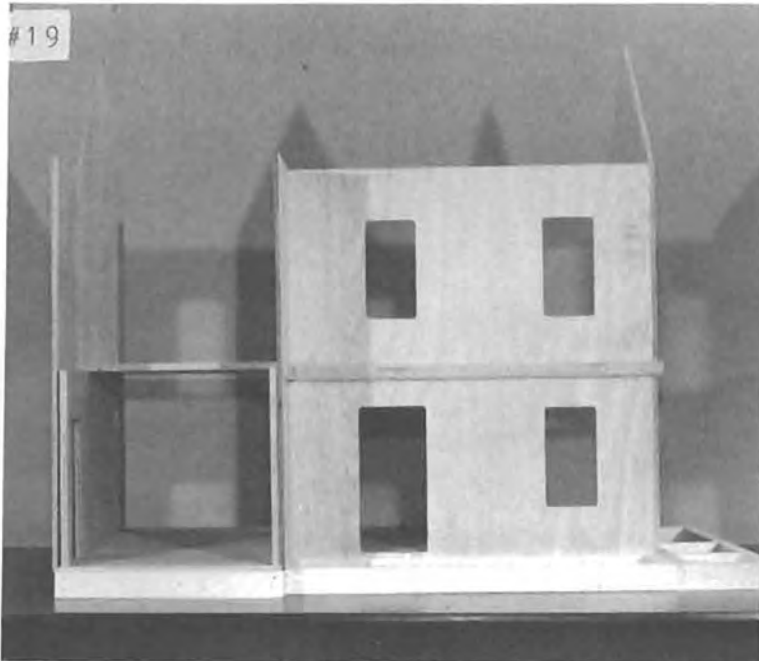


#12

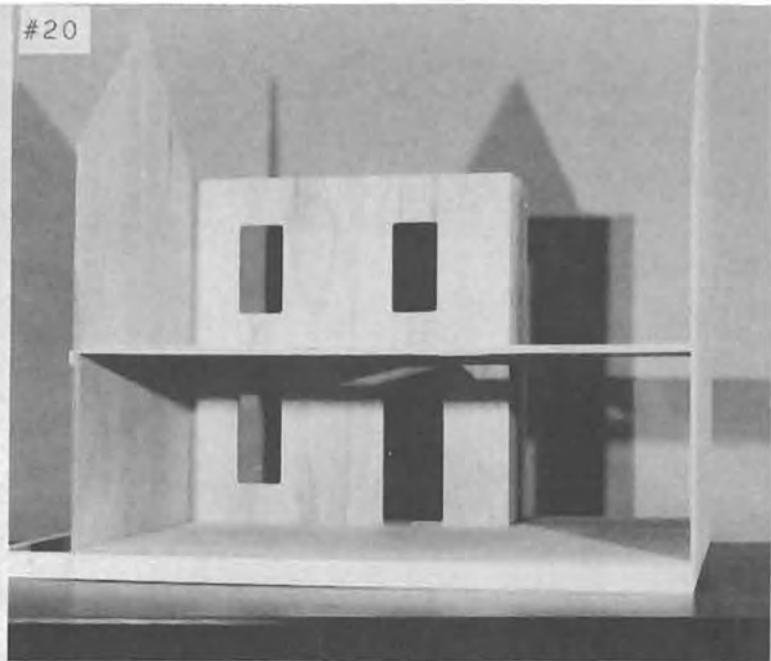




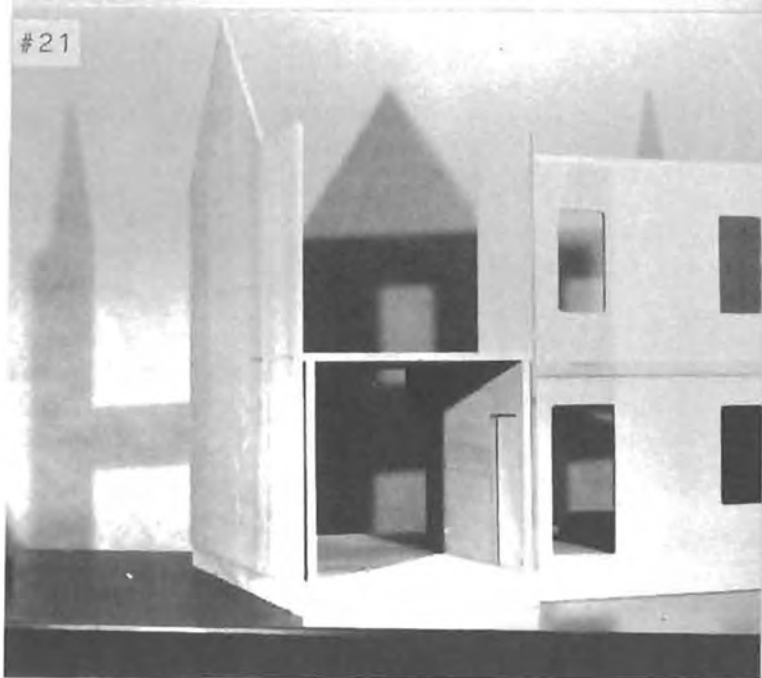
#19



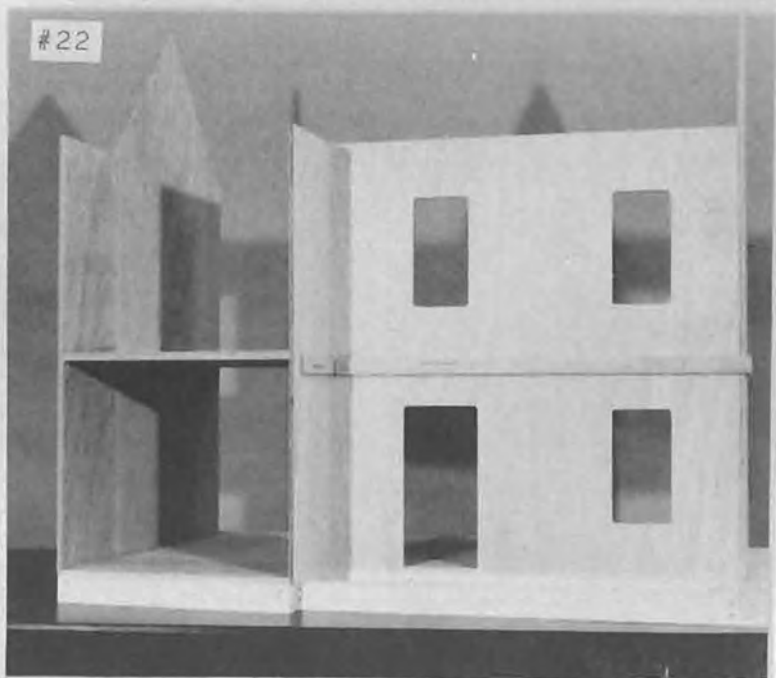
#20



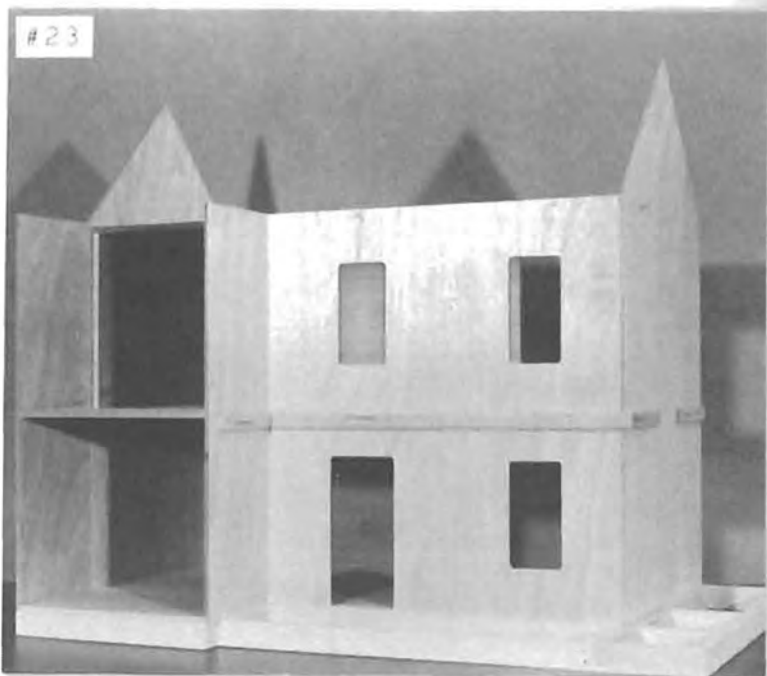
#21



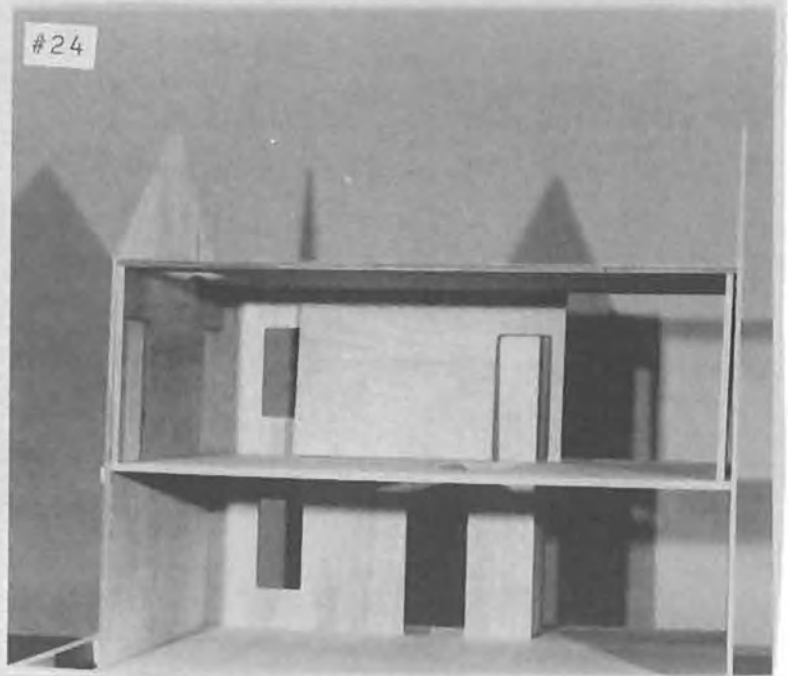
#22



#23



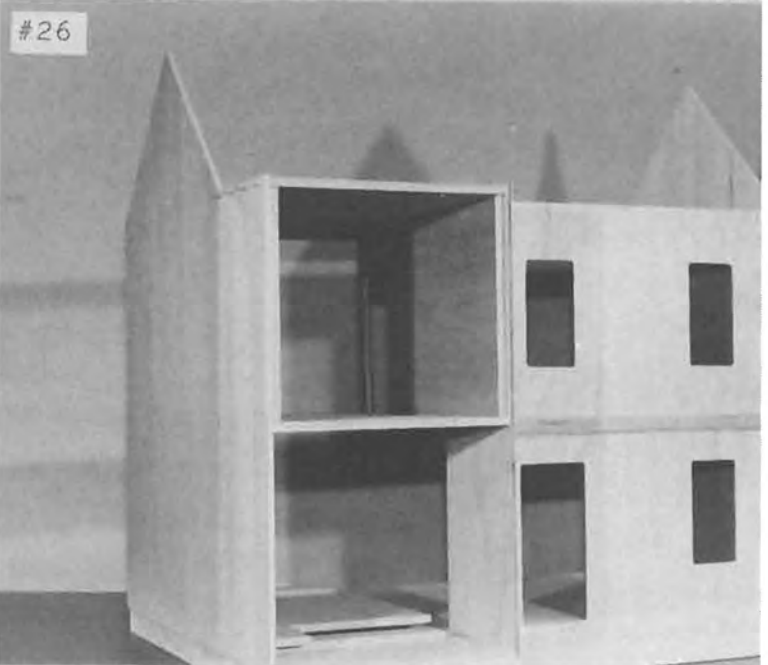
#24



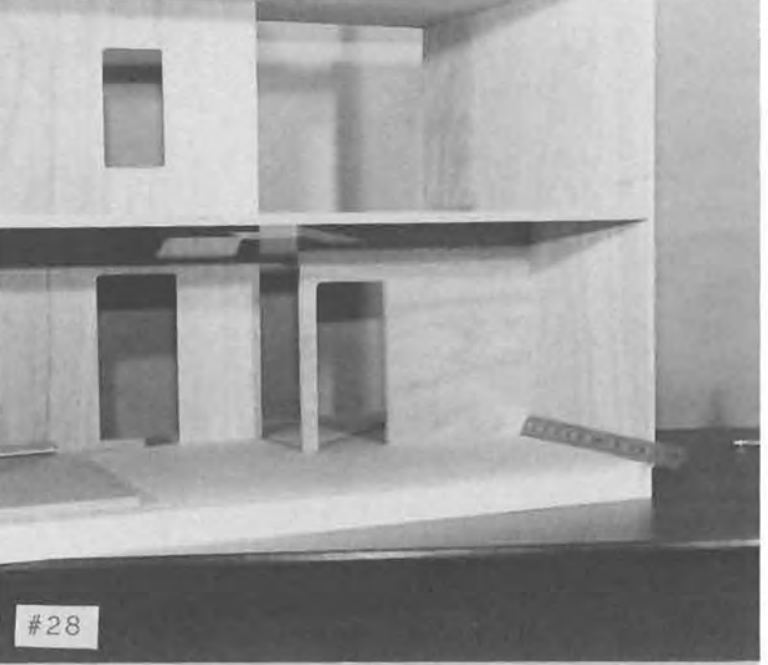
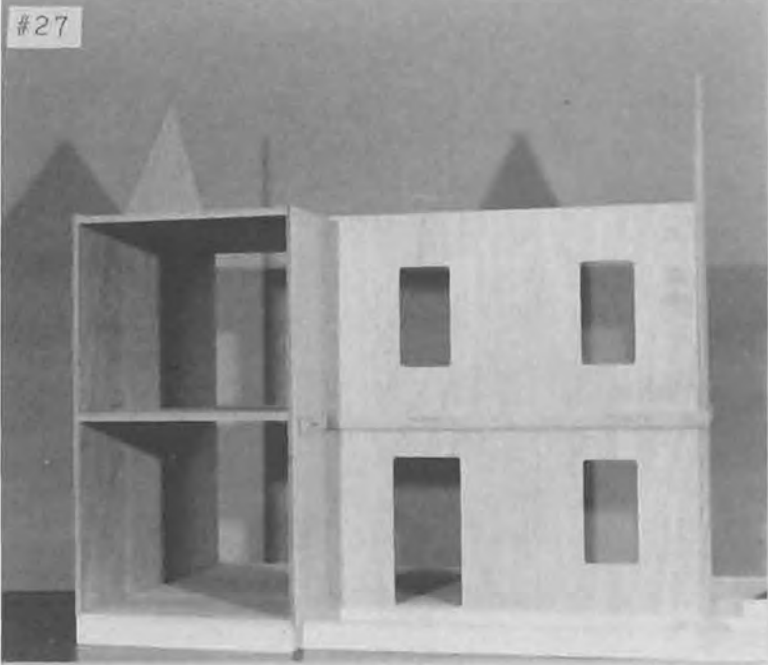
#25



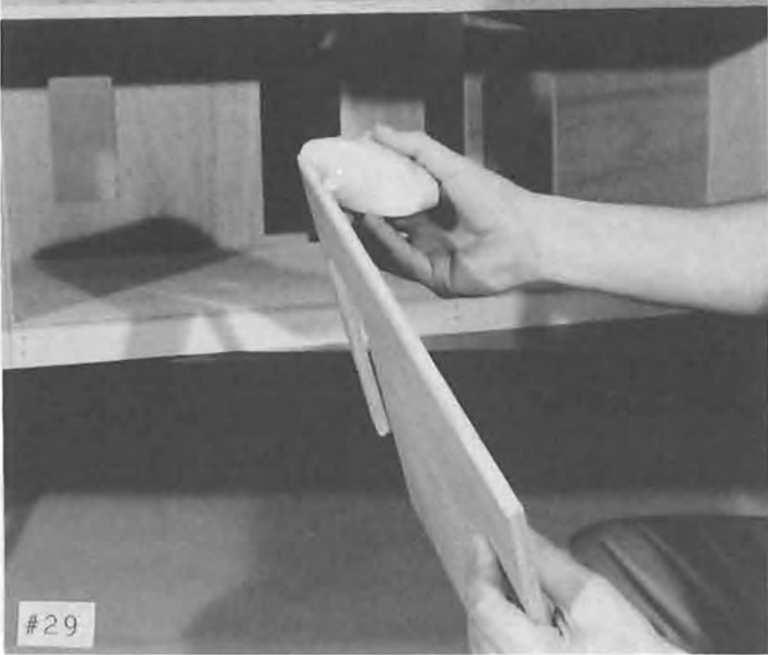
#26



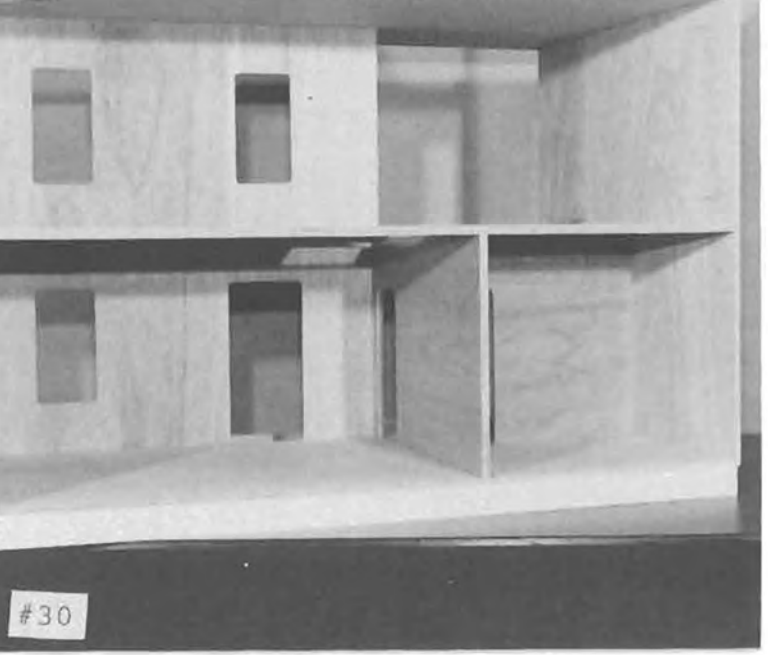
#27



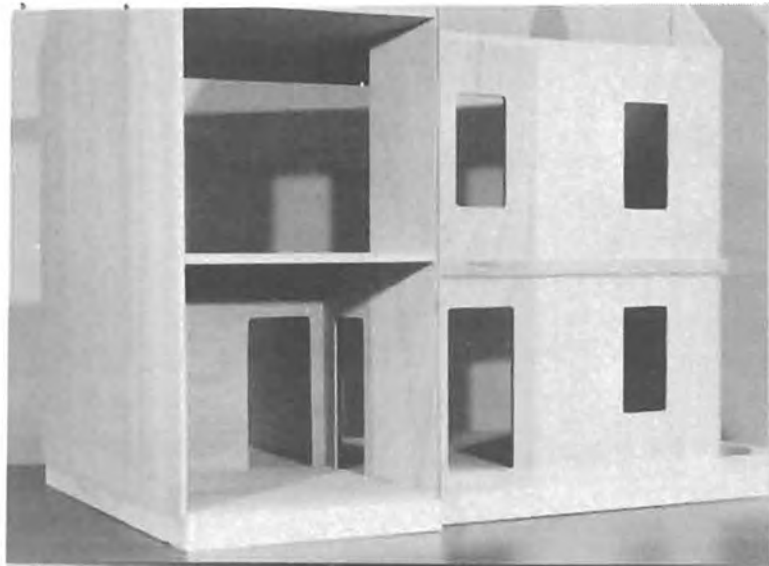
#28



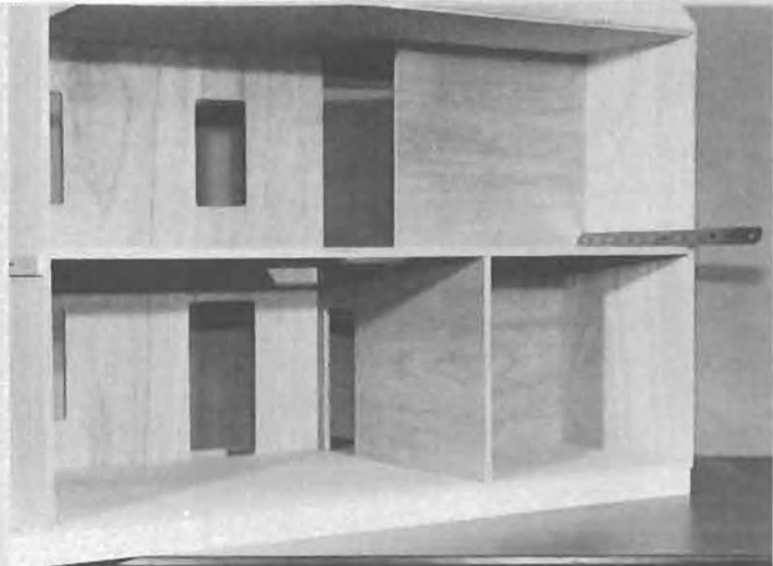
#29



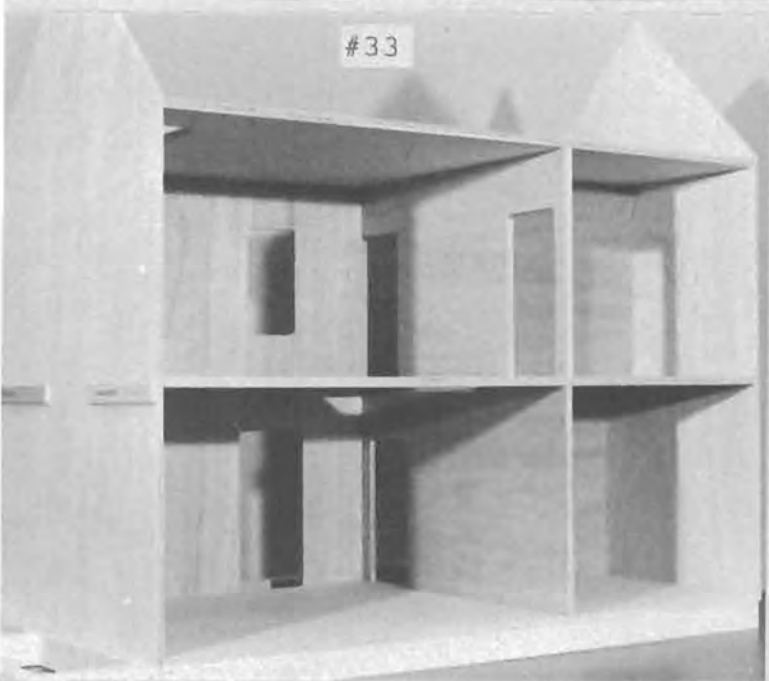
#30



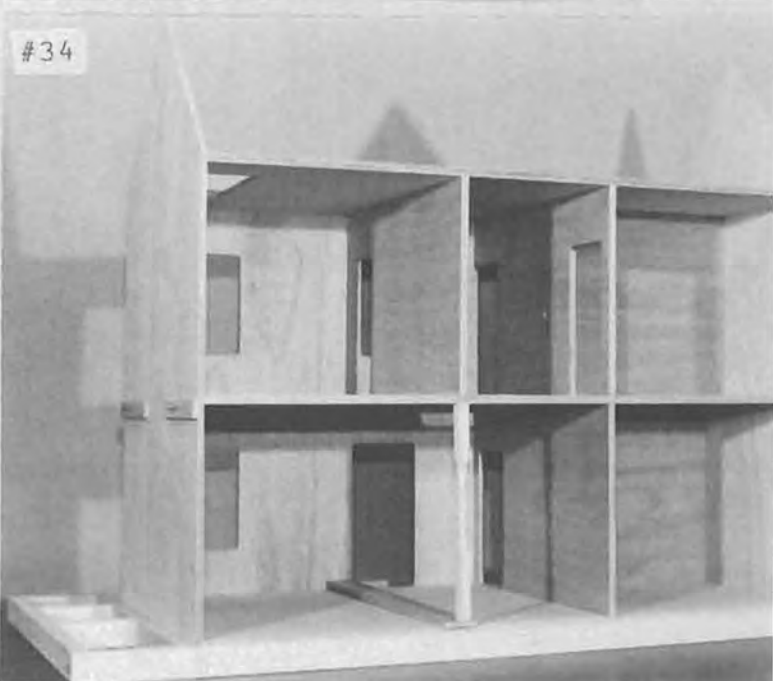
#31



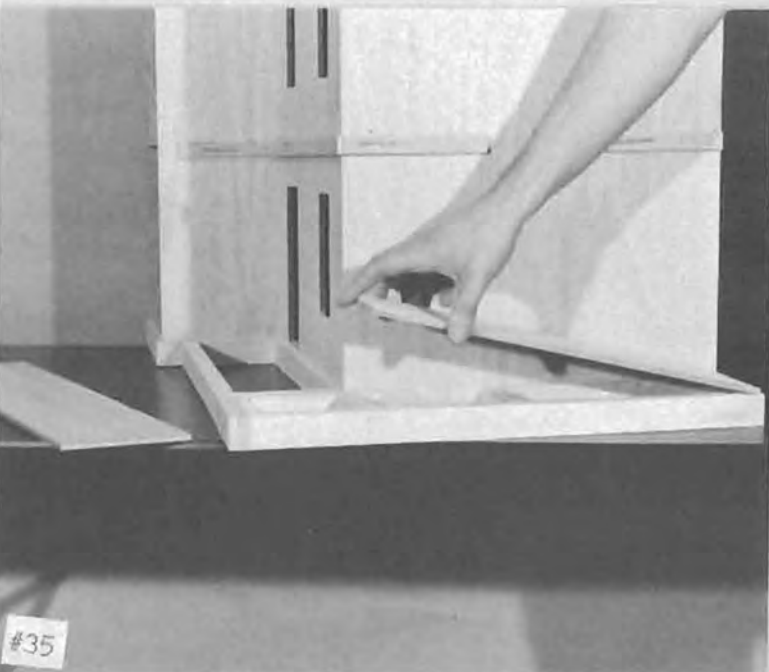
#32



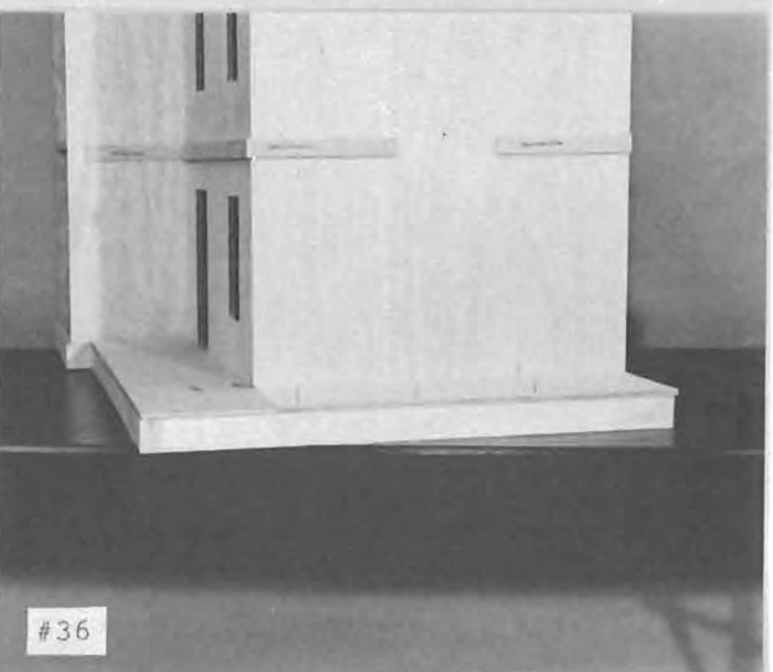
#33



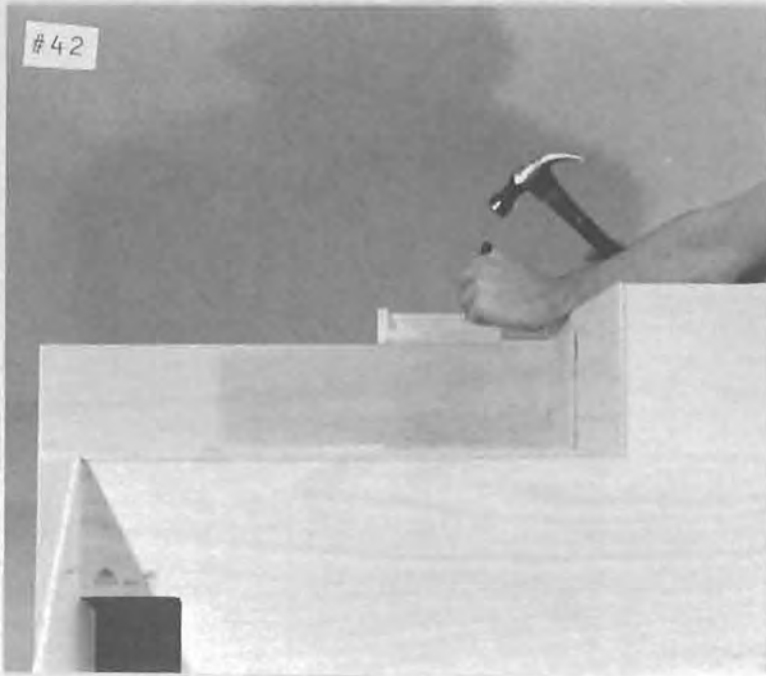
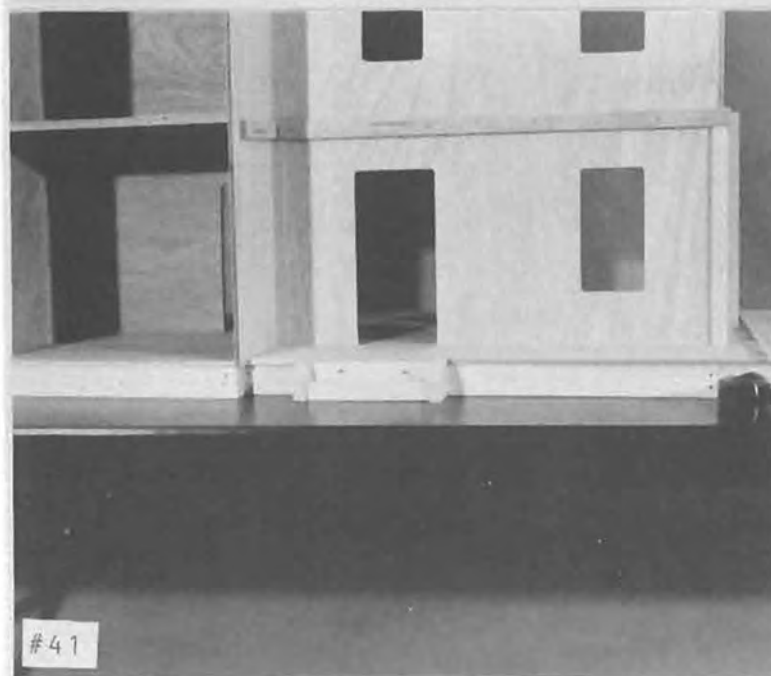
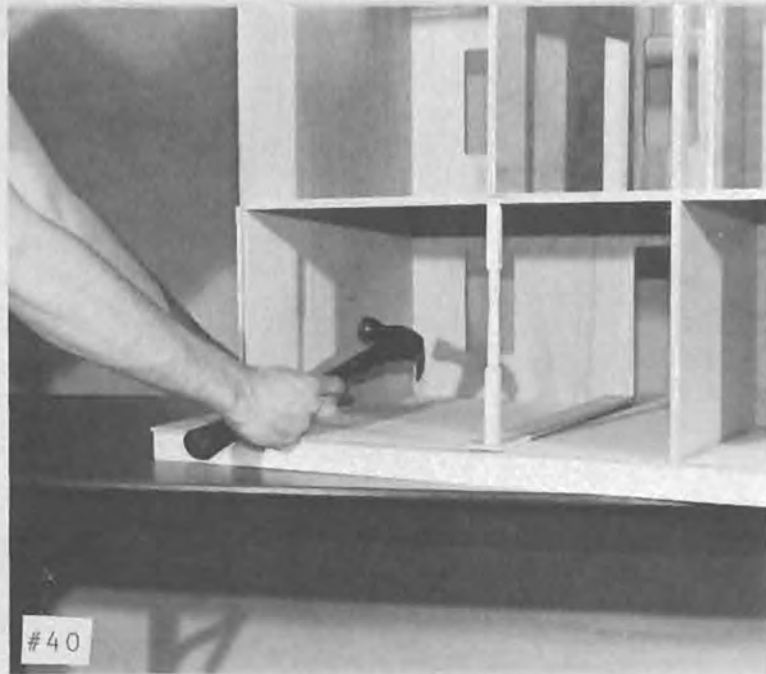
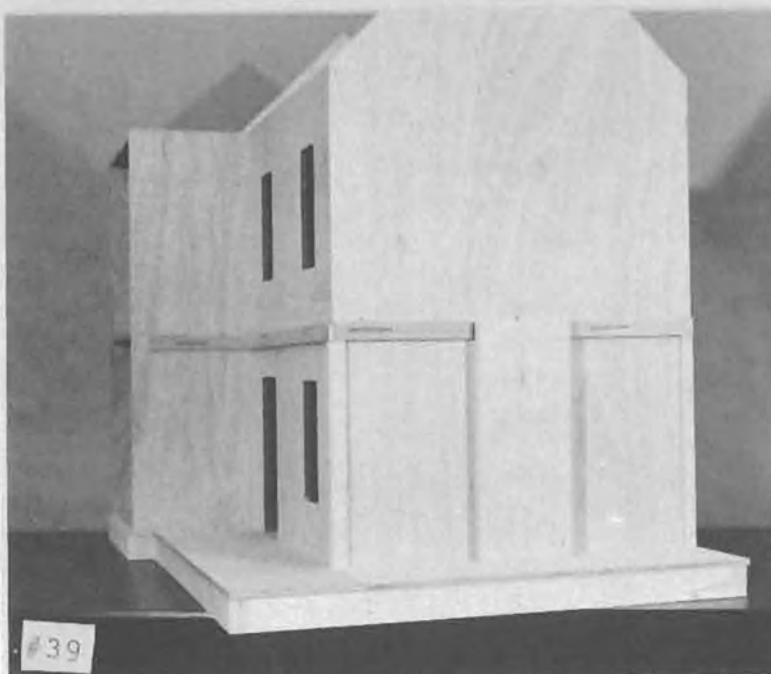
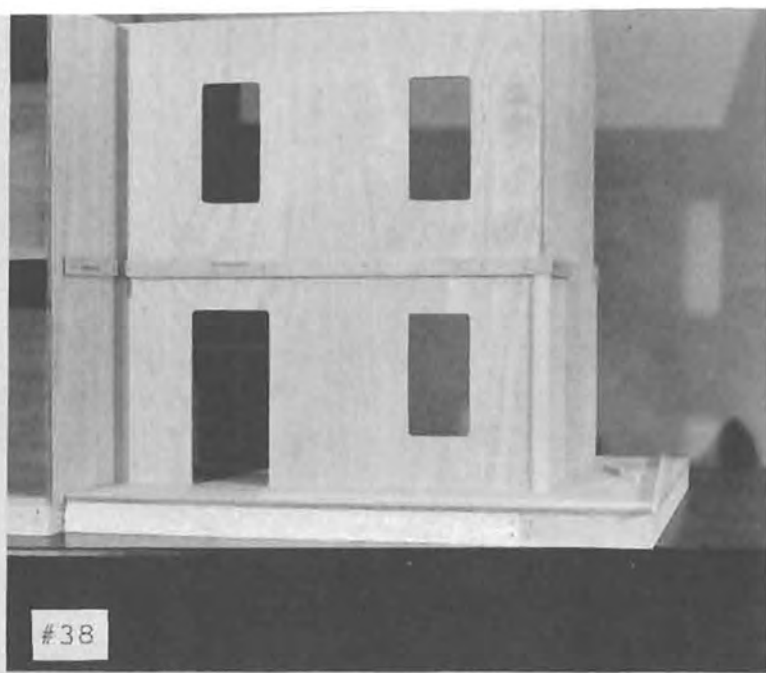
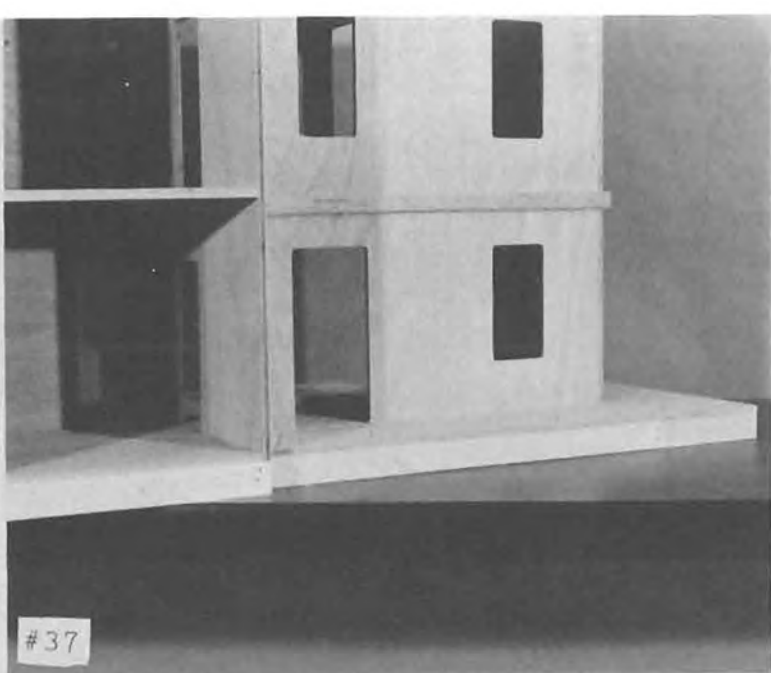
#34

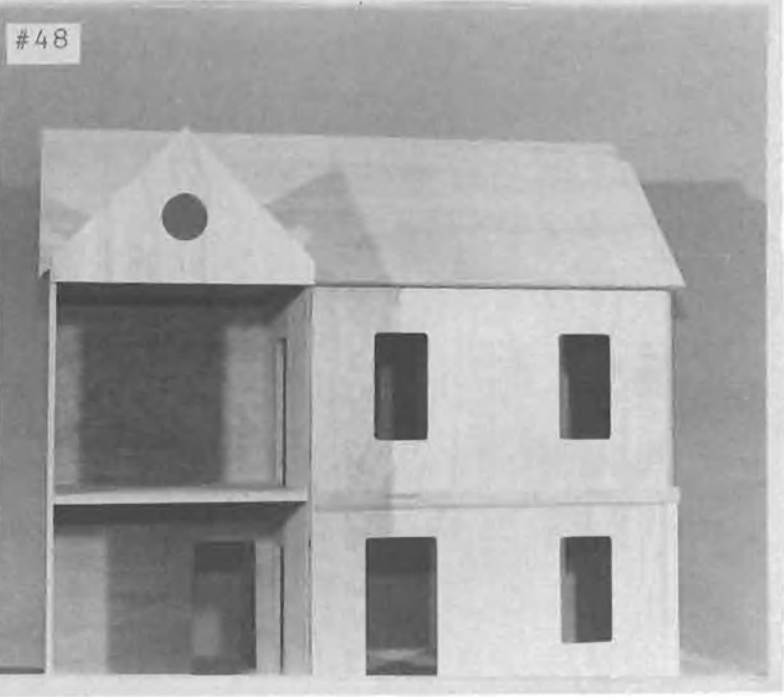
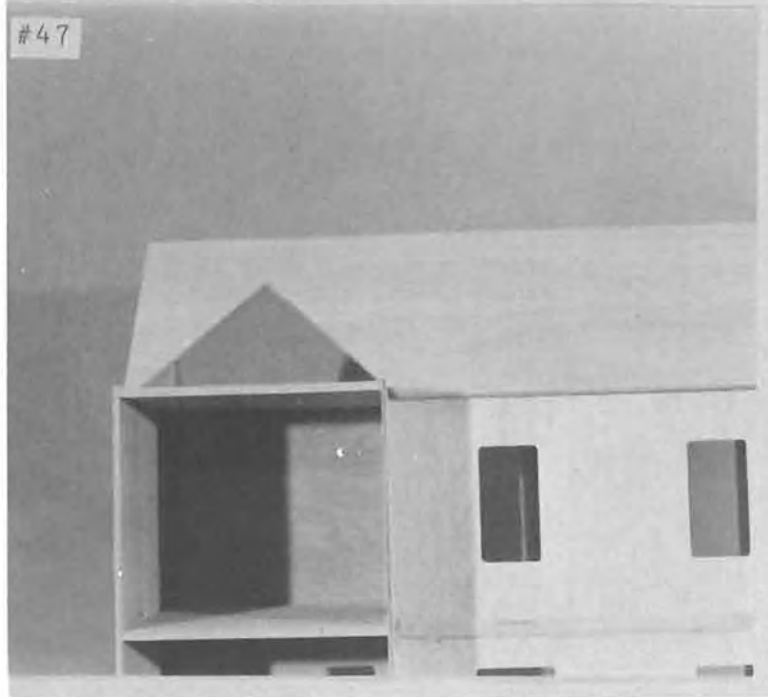
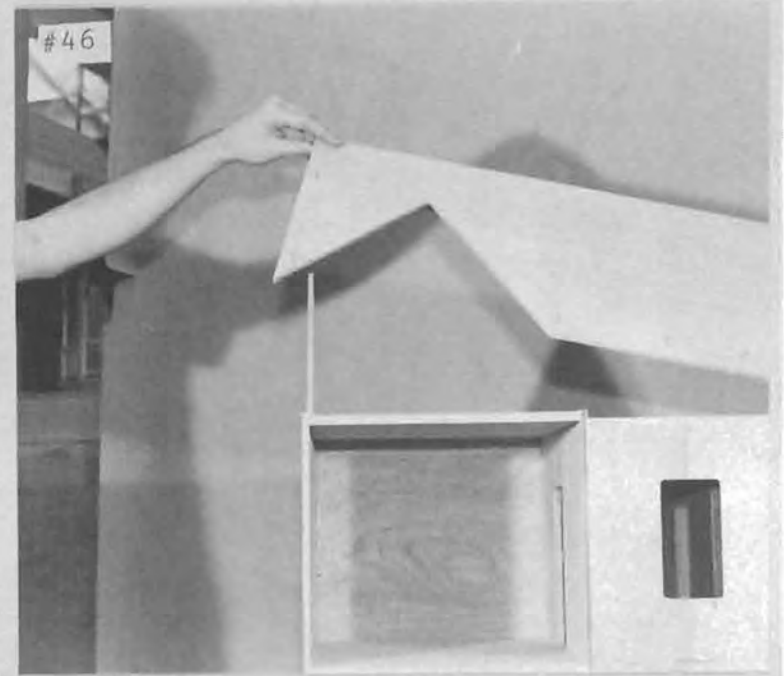
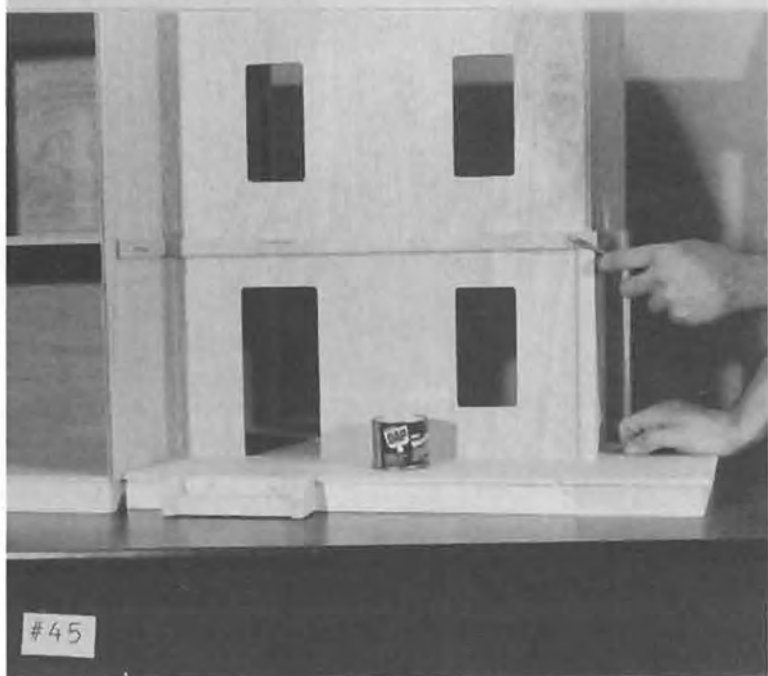
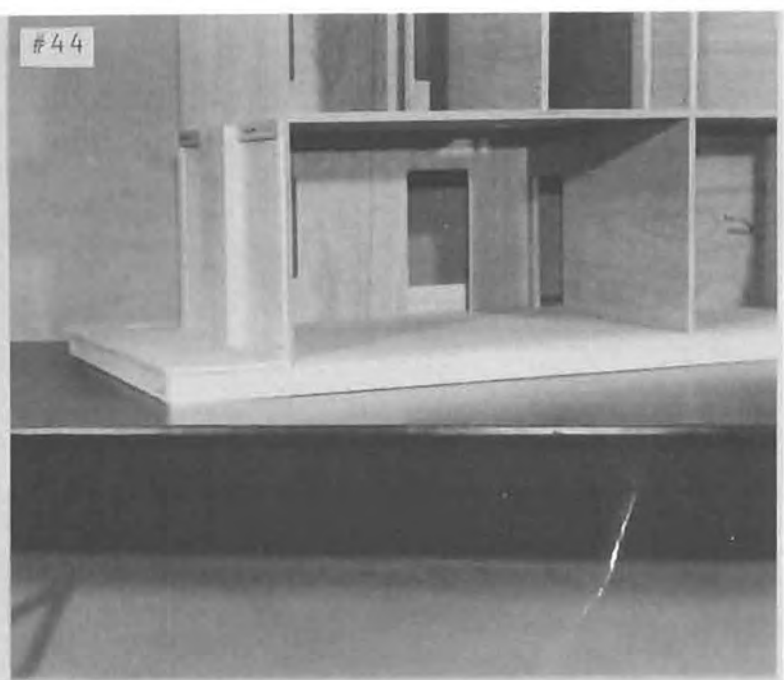
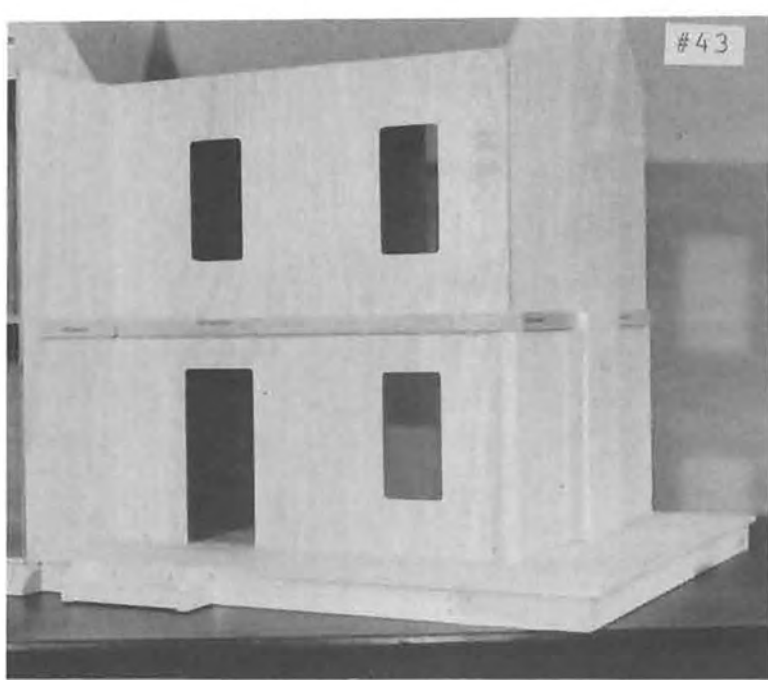


#35

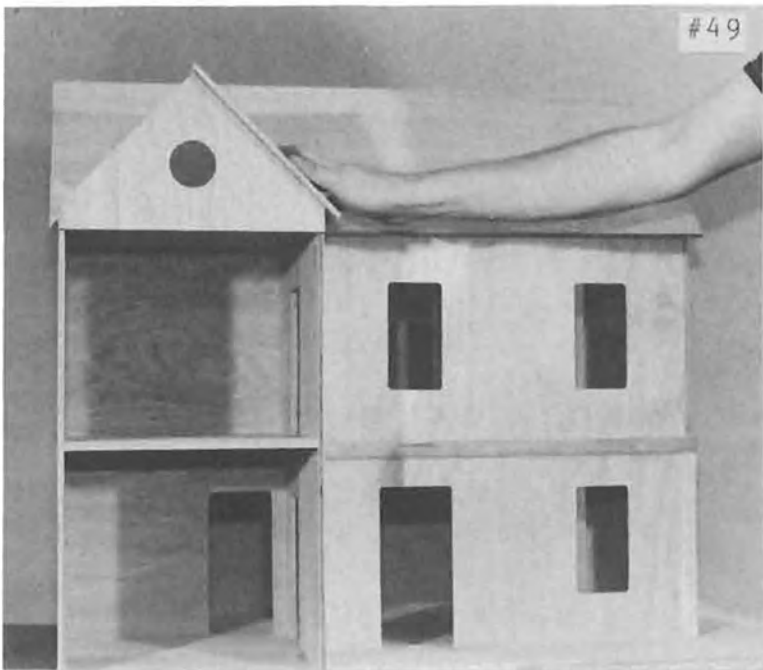


#36





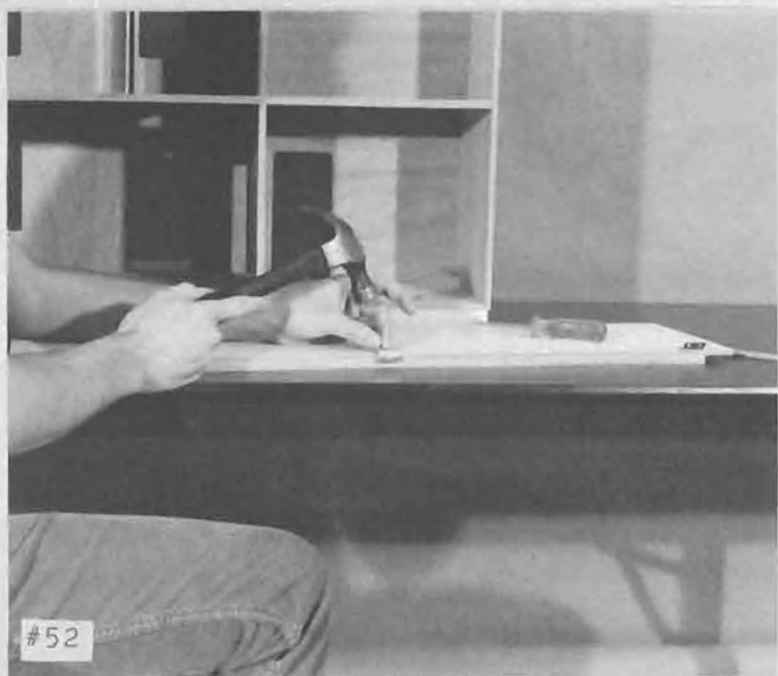
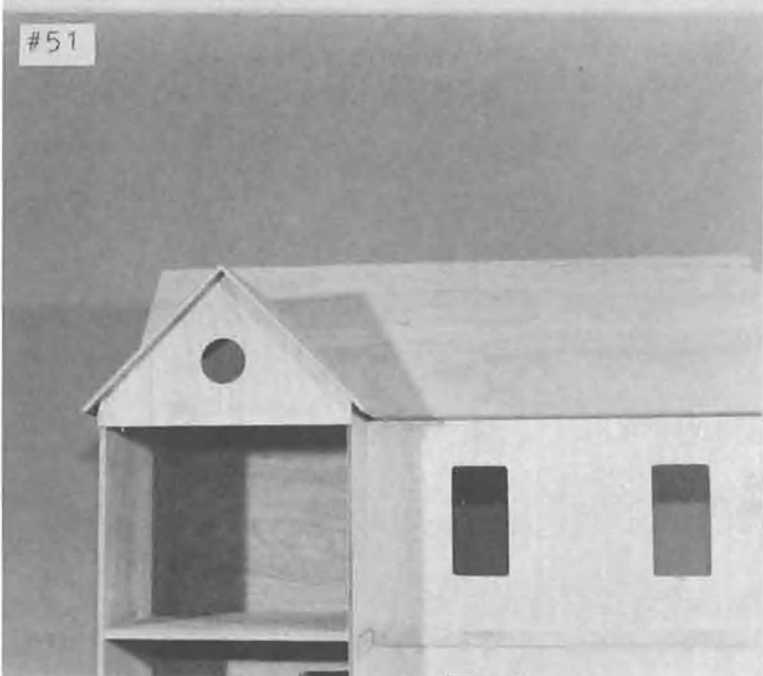
#49



#50

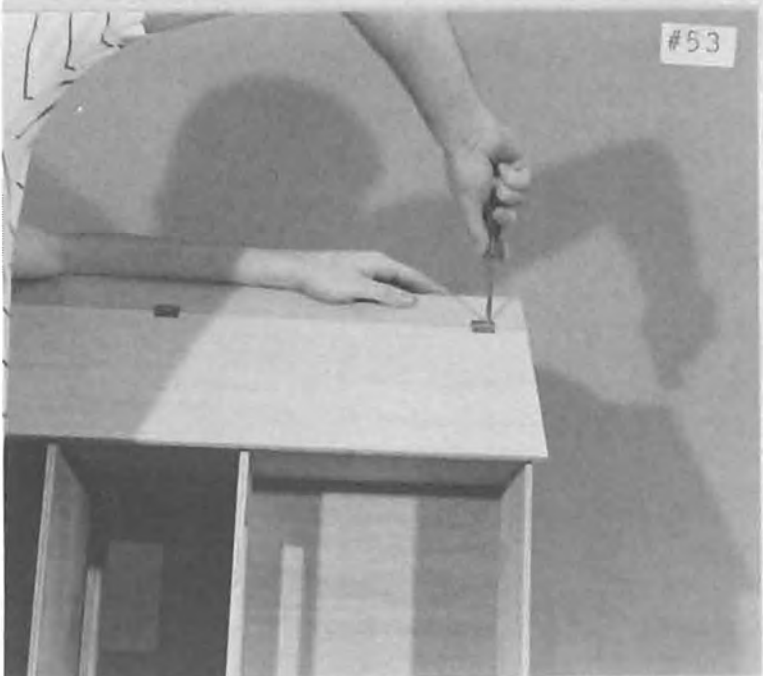


#51

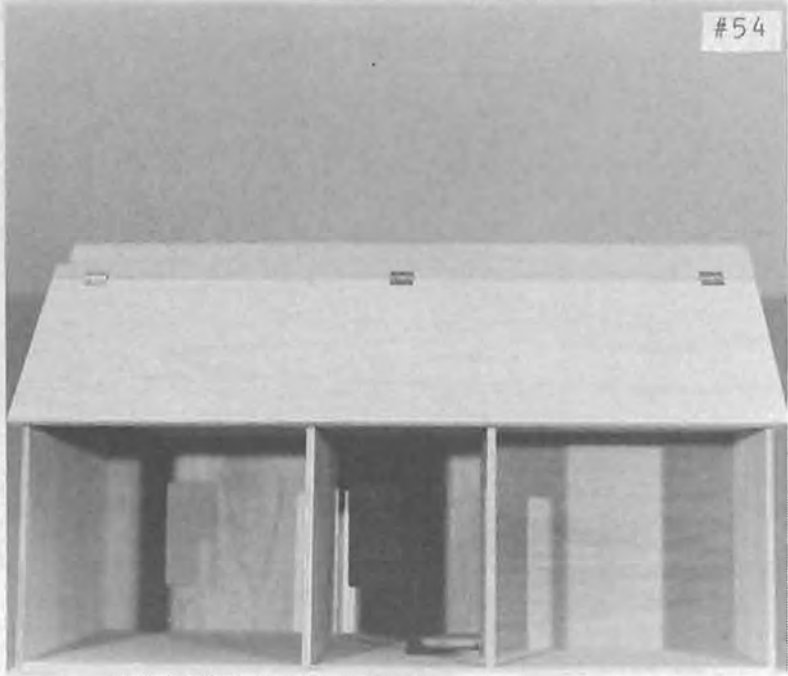


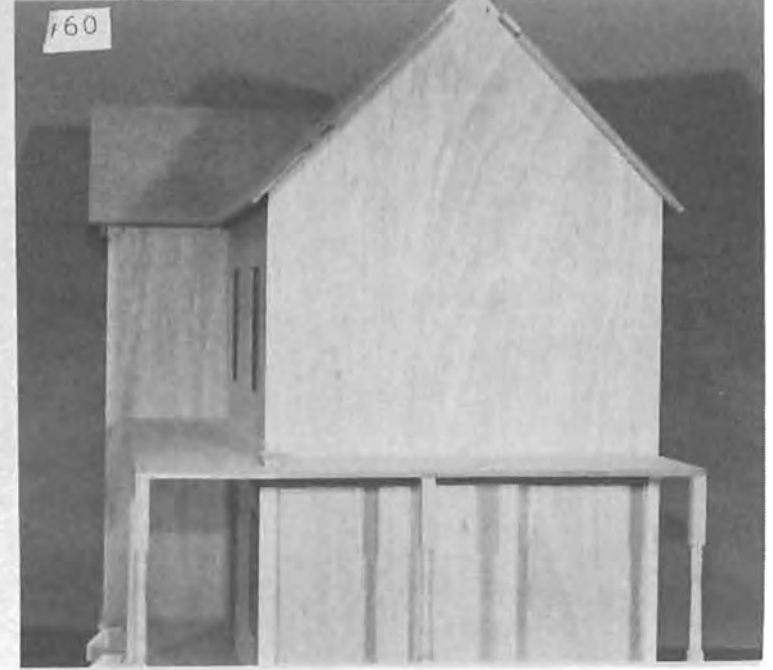
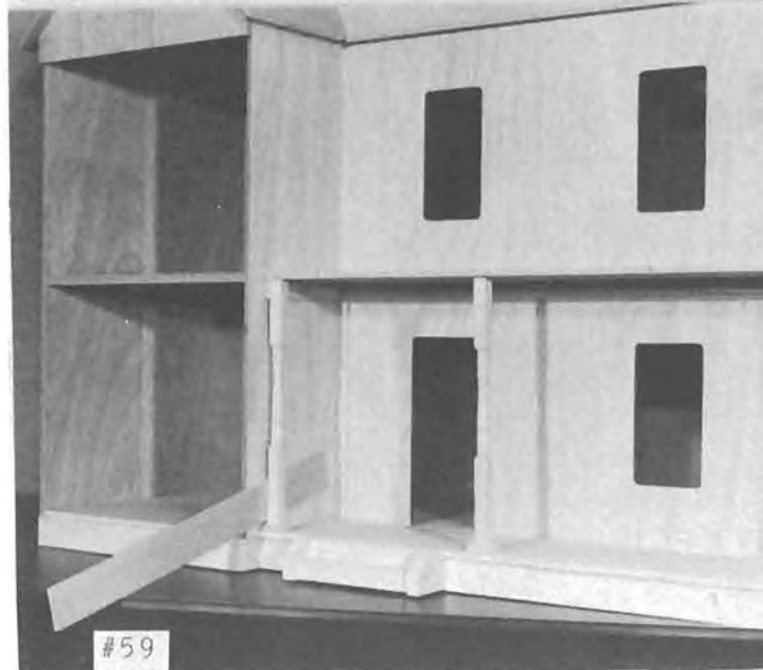
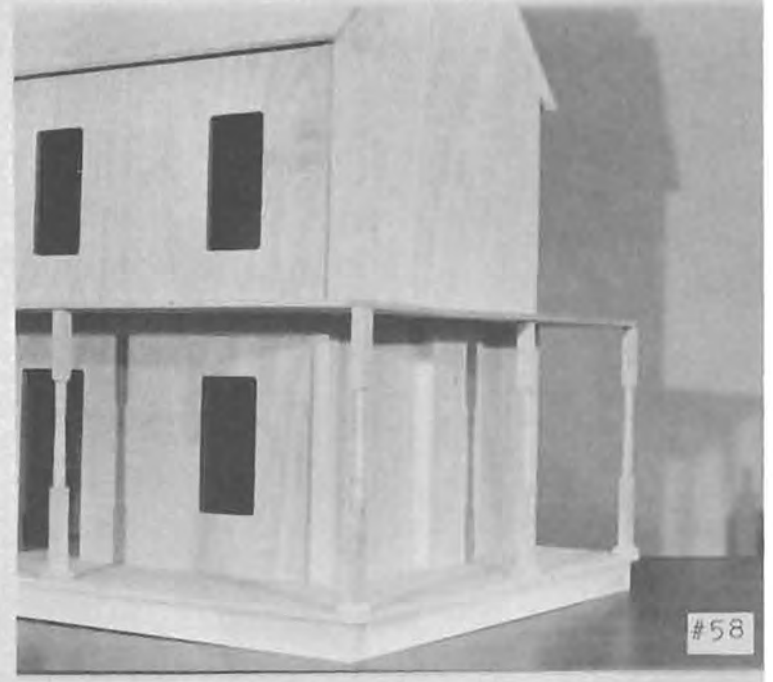
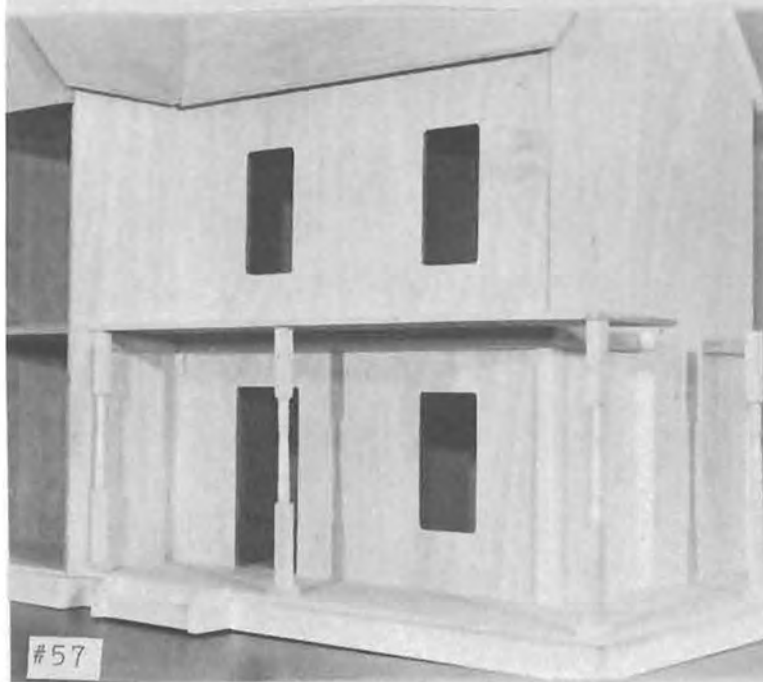
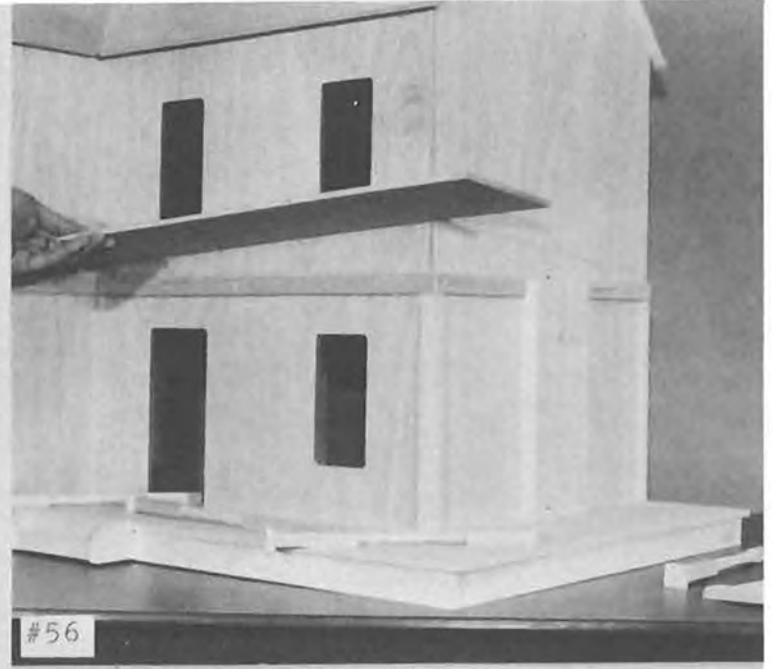
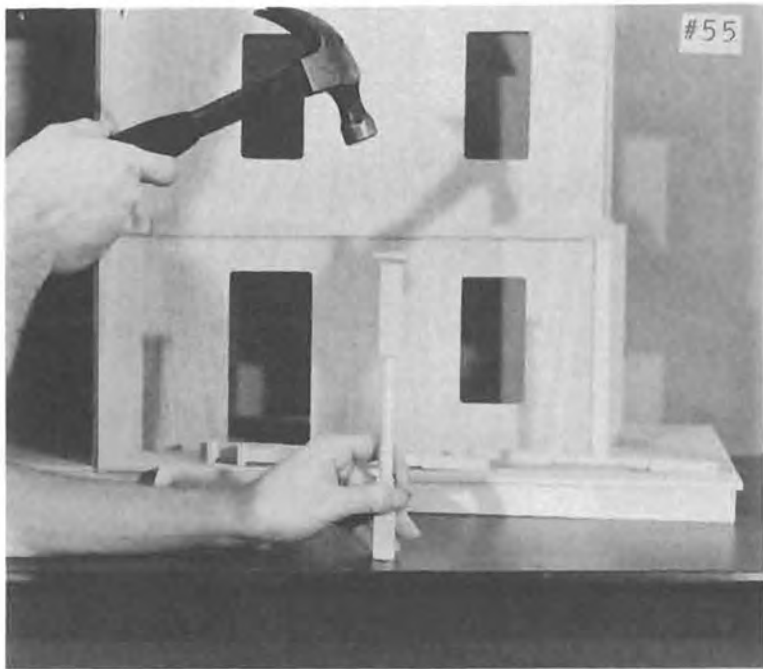
#52

#53

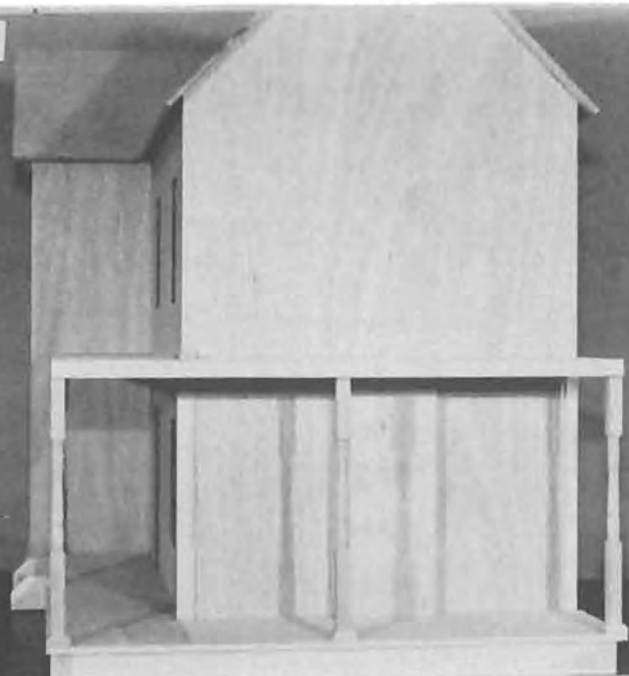


#54

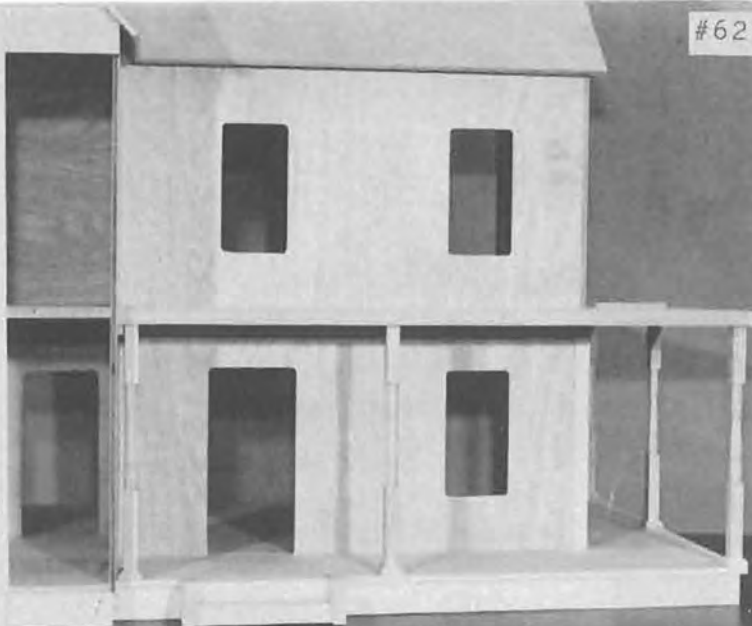




#61



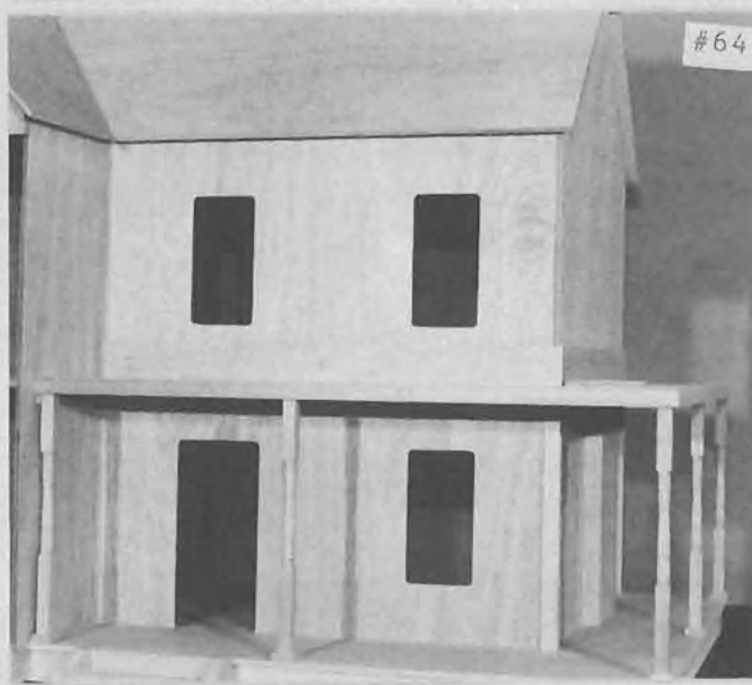
#62



#63



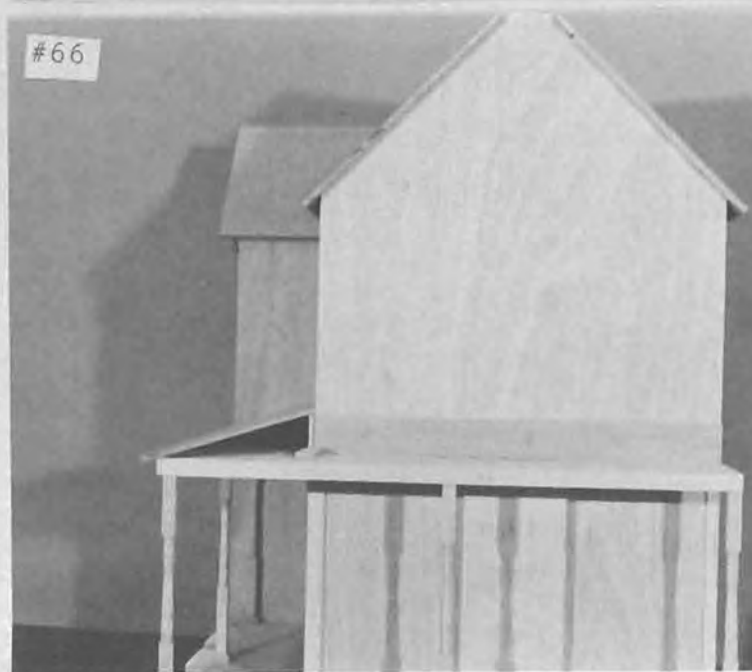
#64

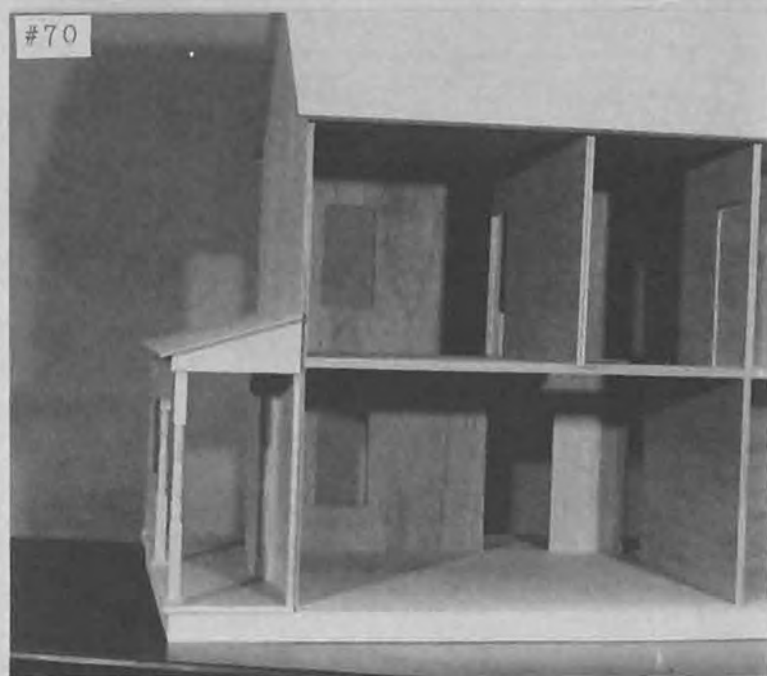
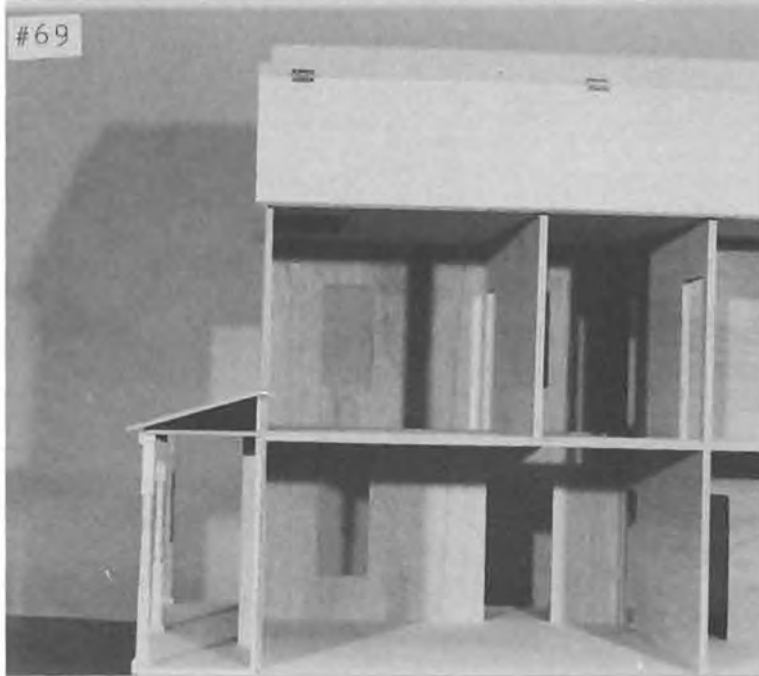
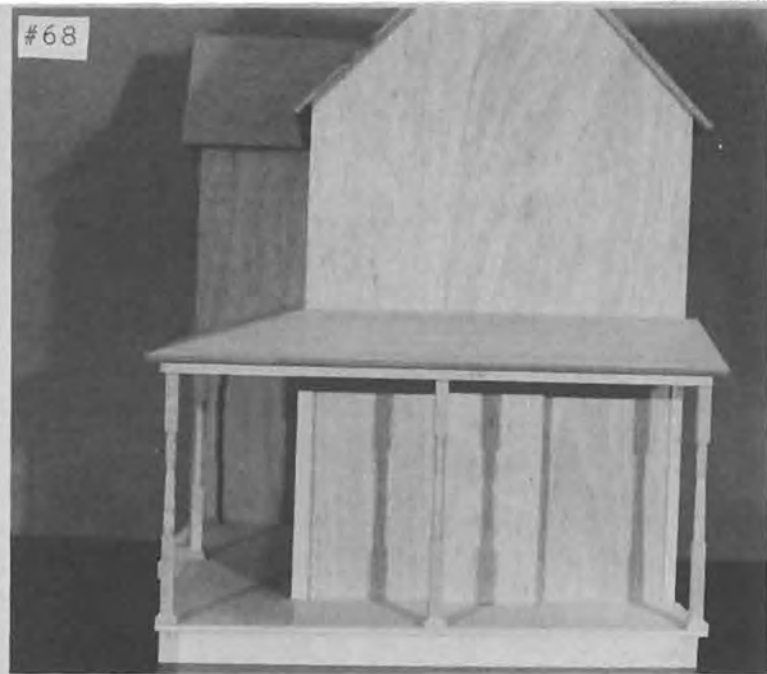
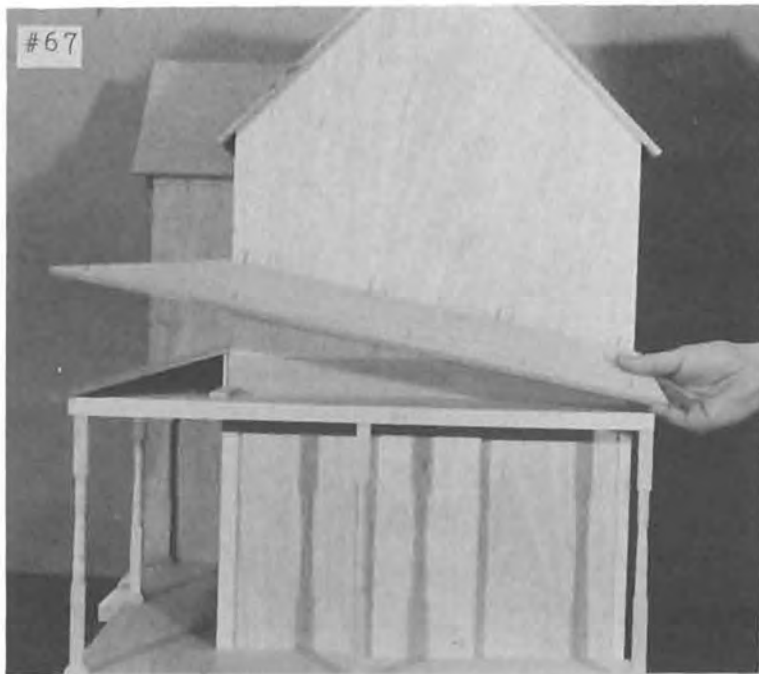


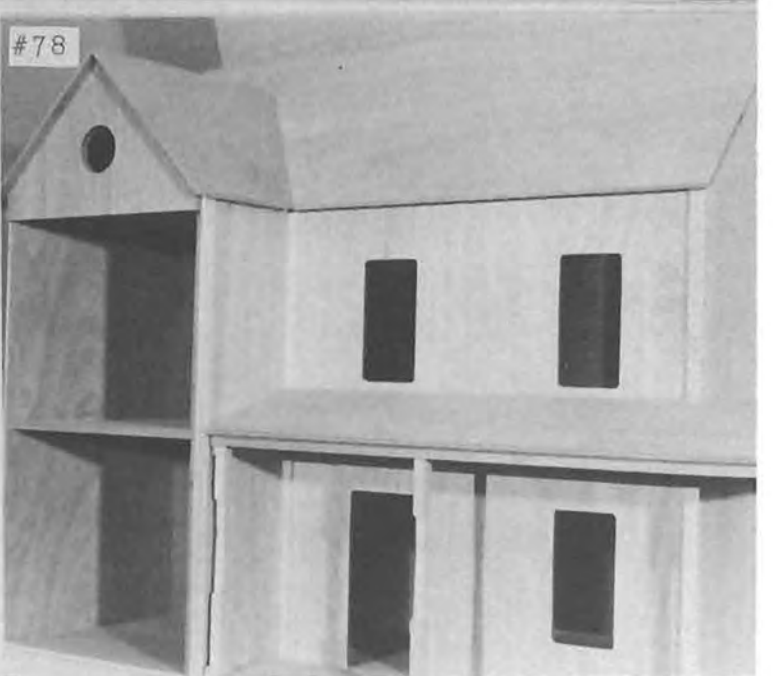
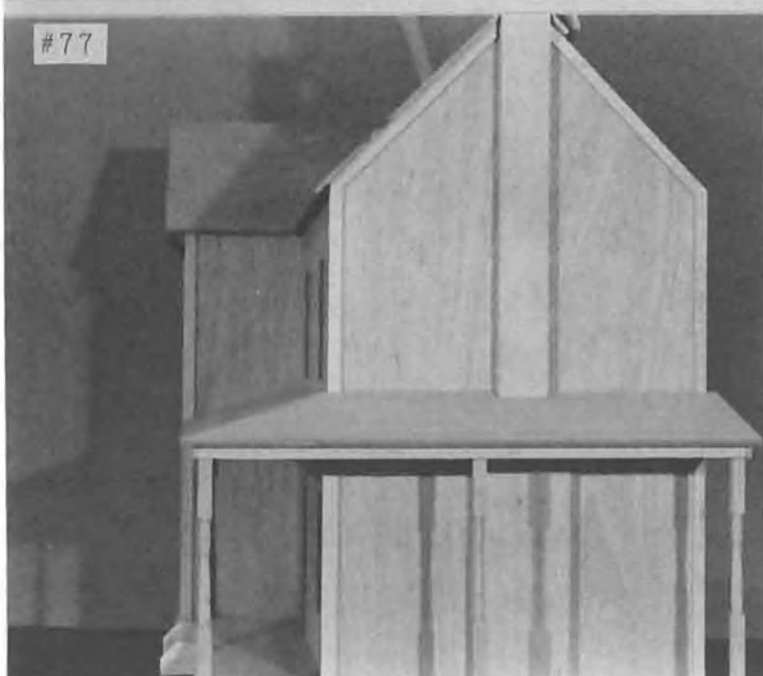
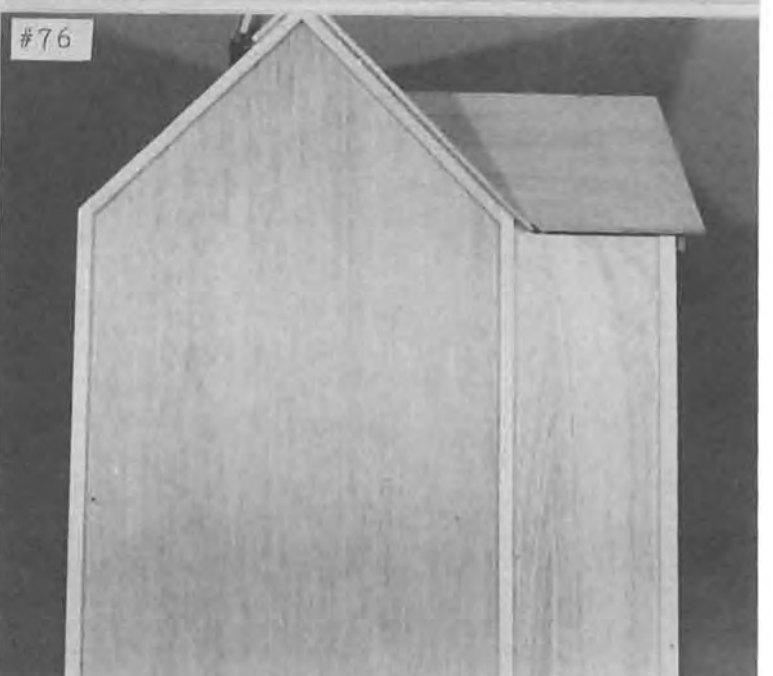
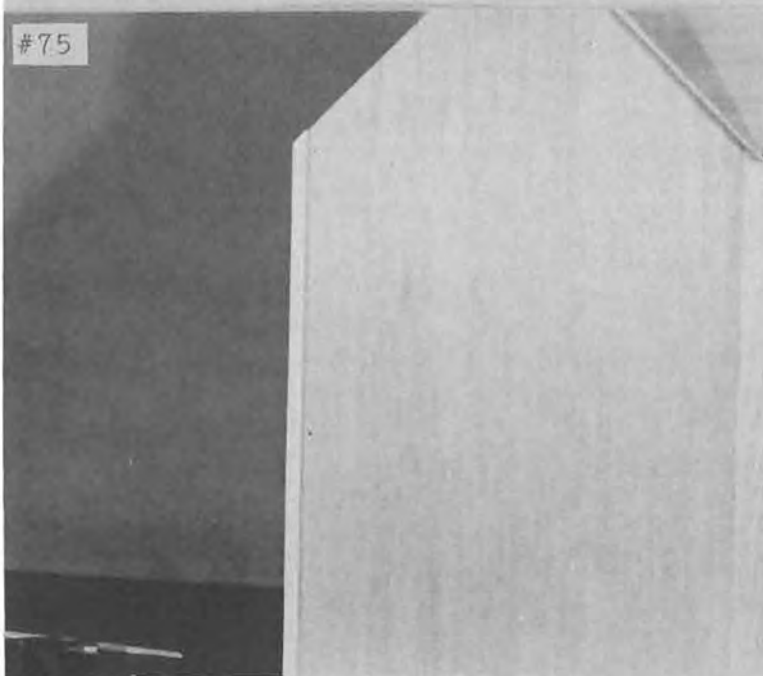
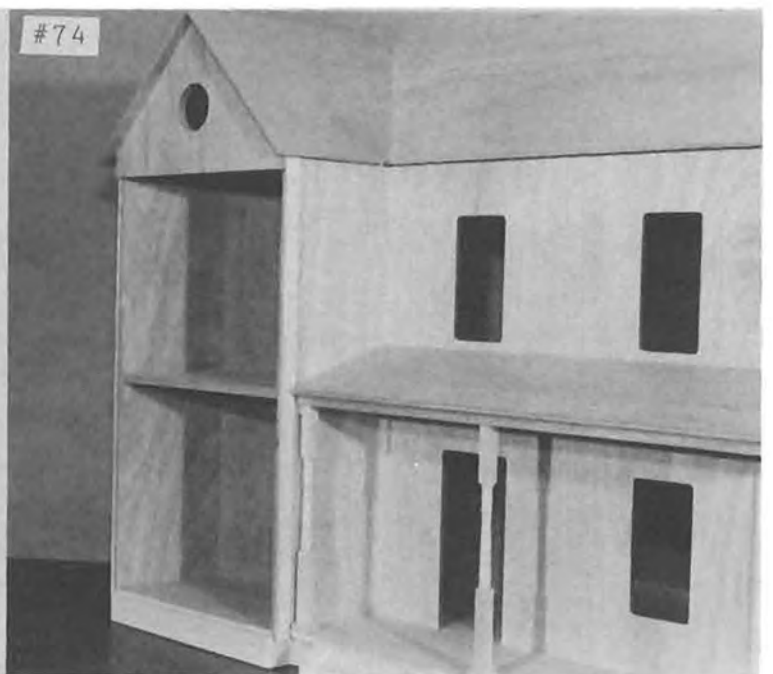
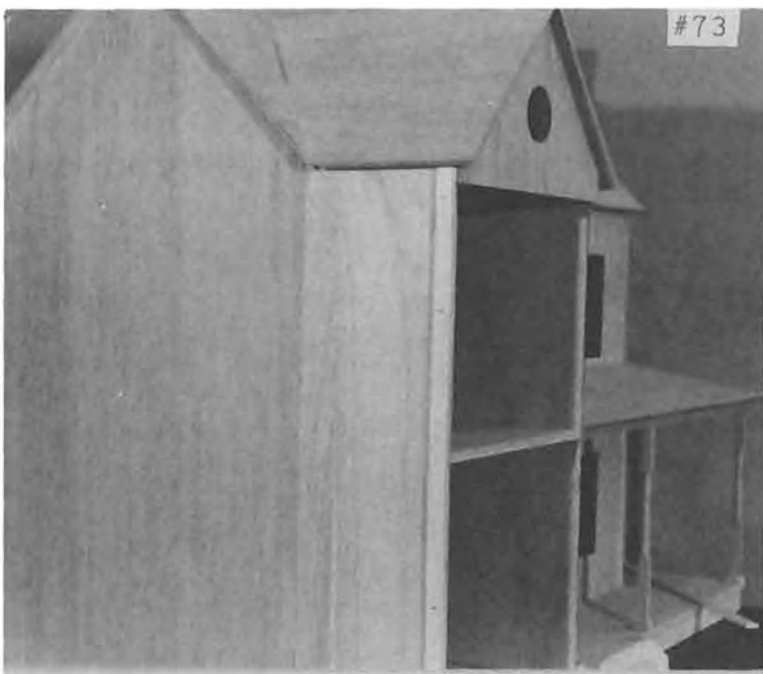
#65

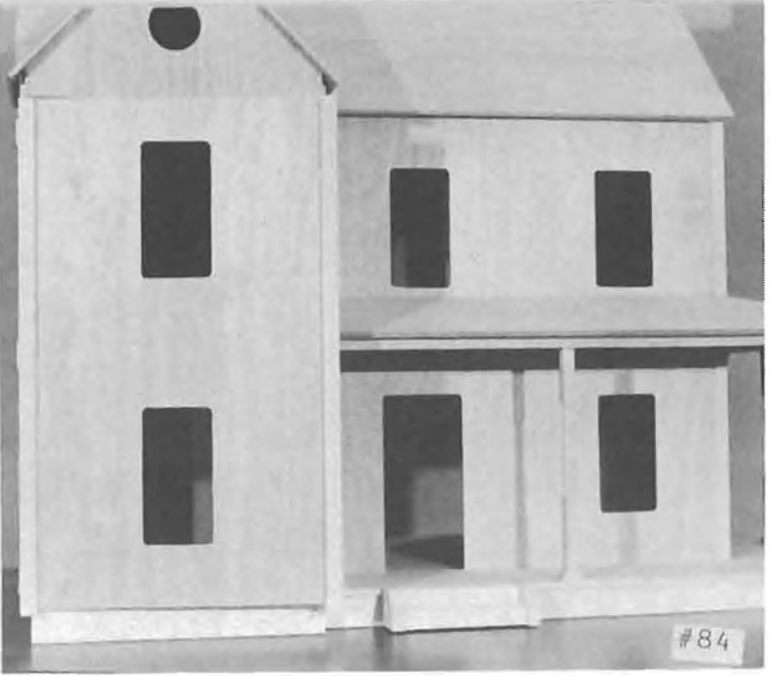
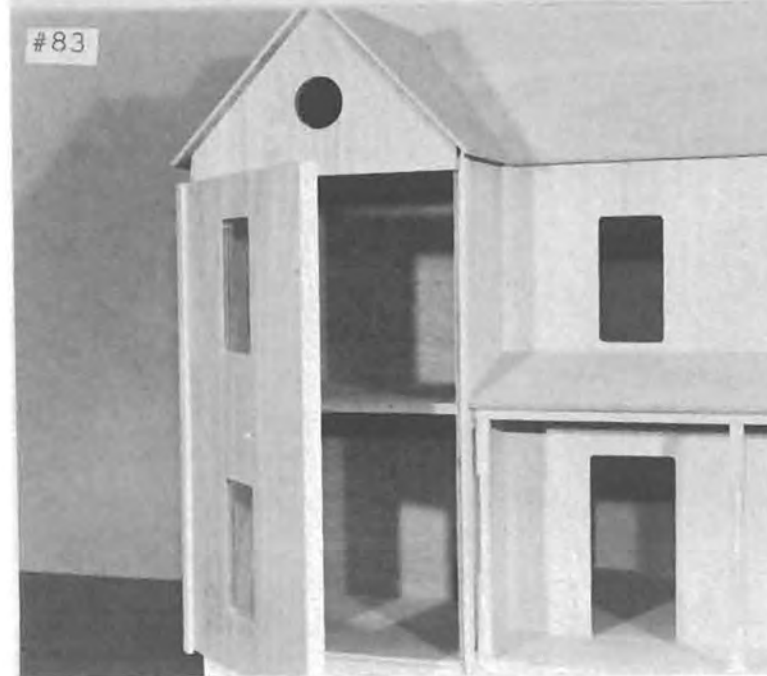
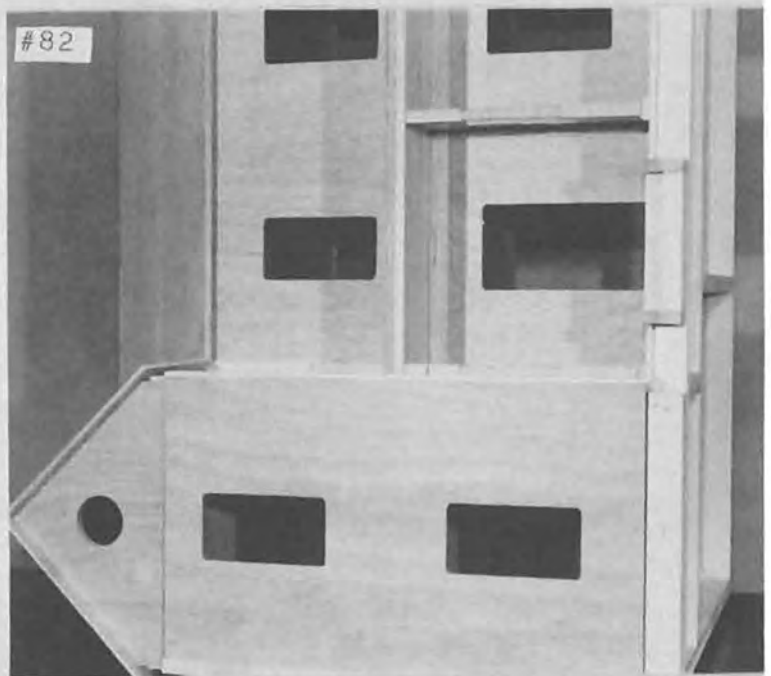
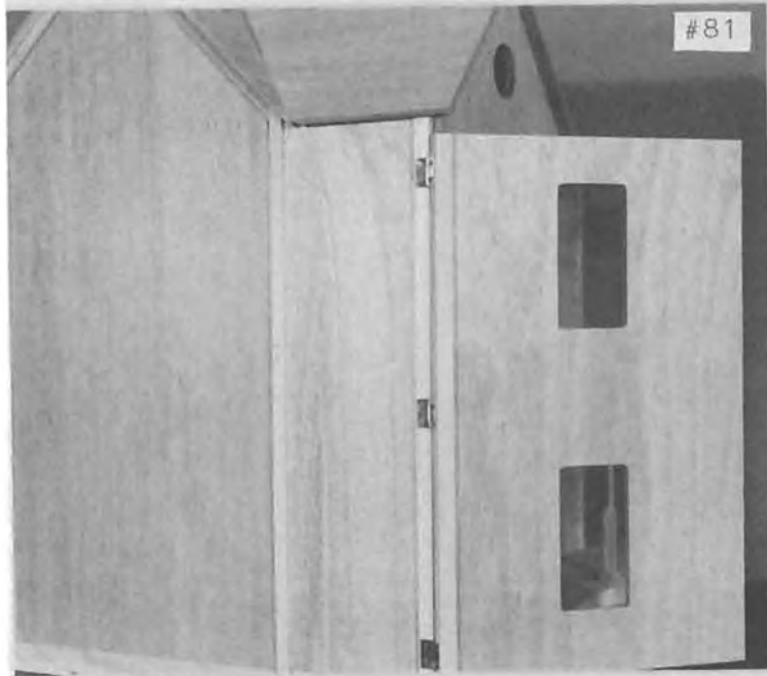
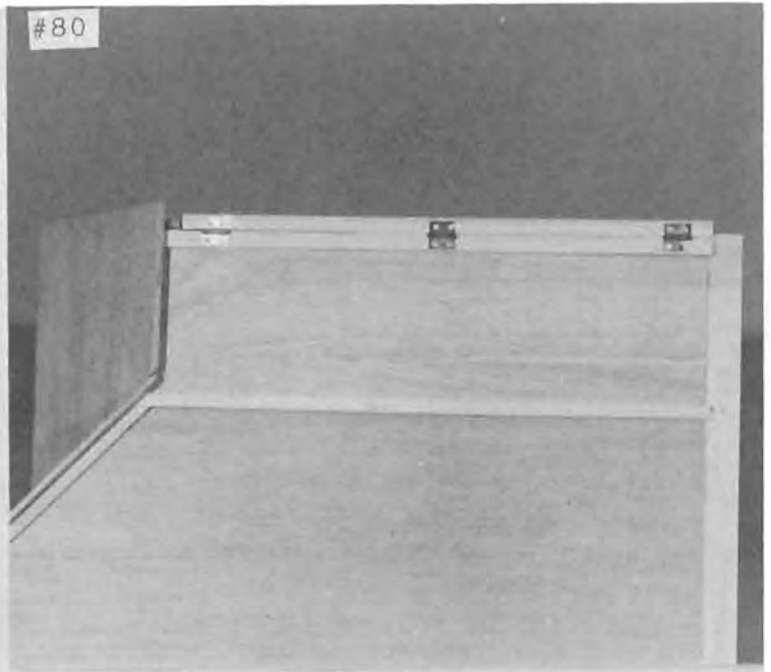
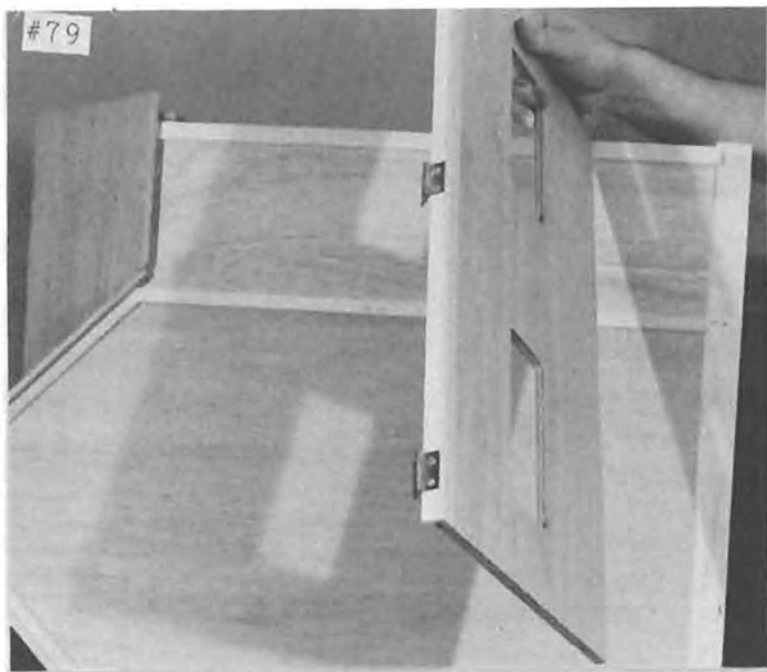


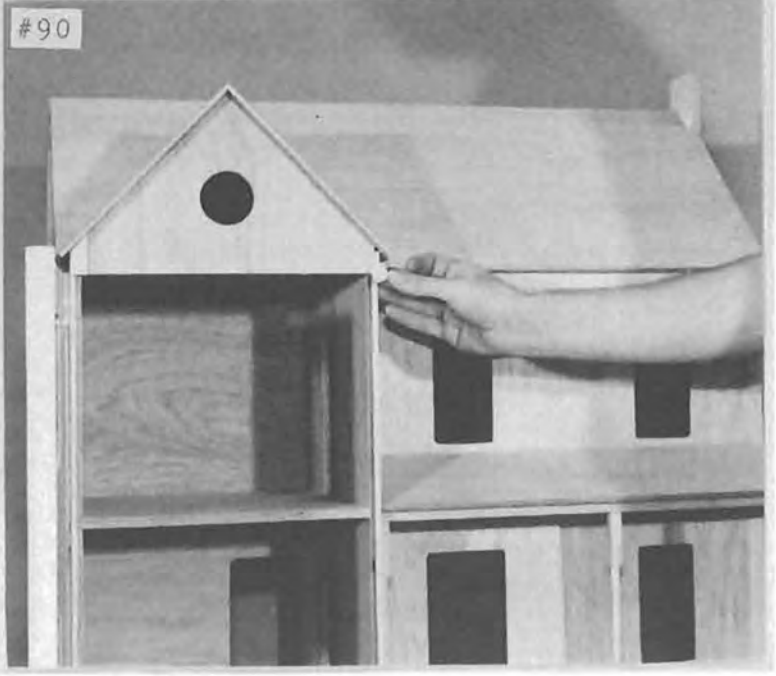
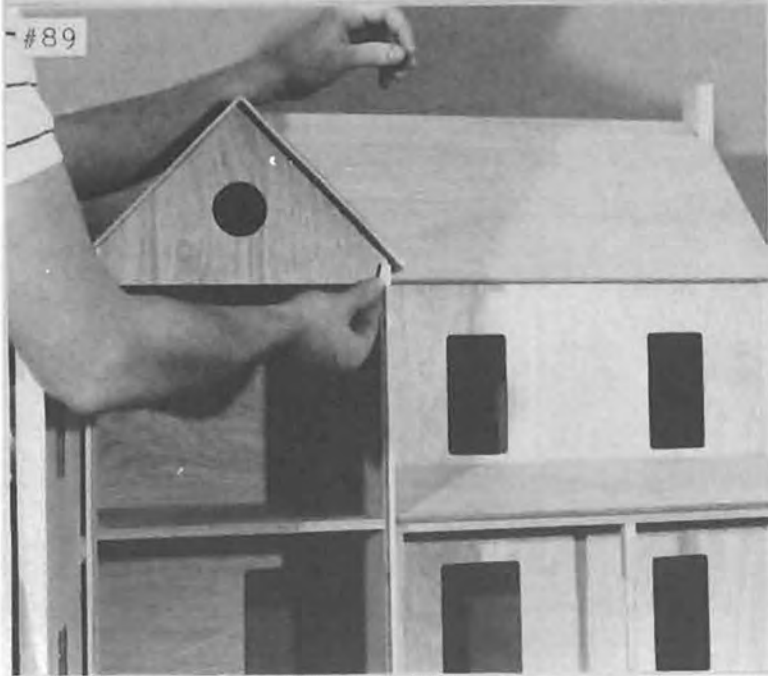
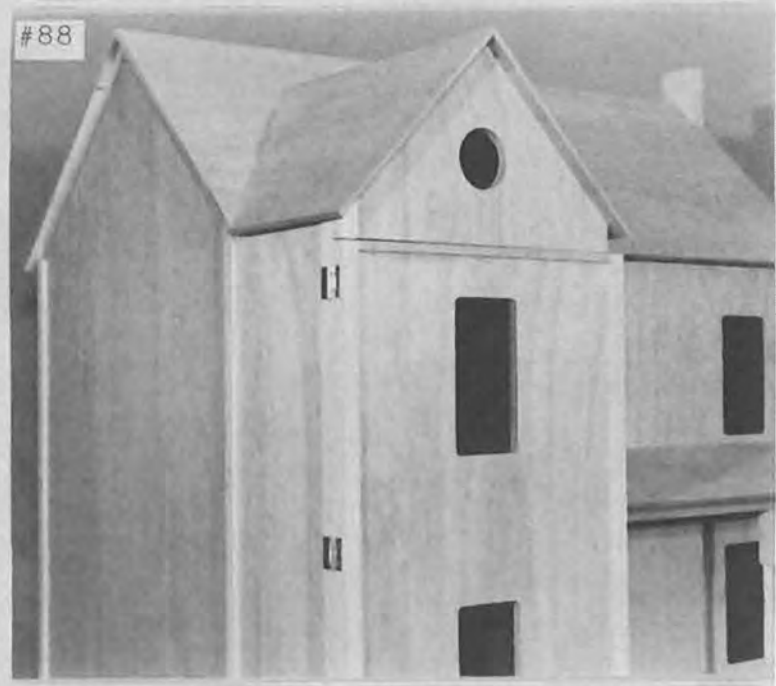
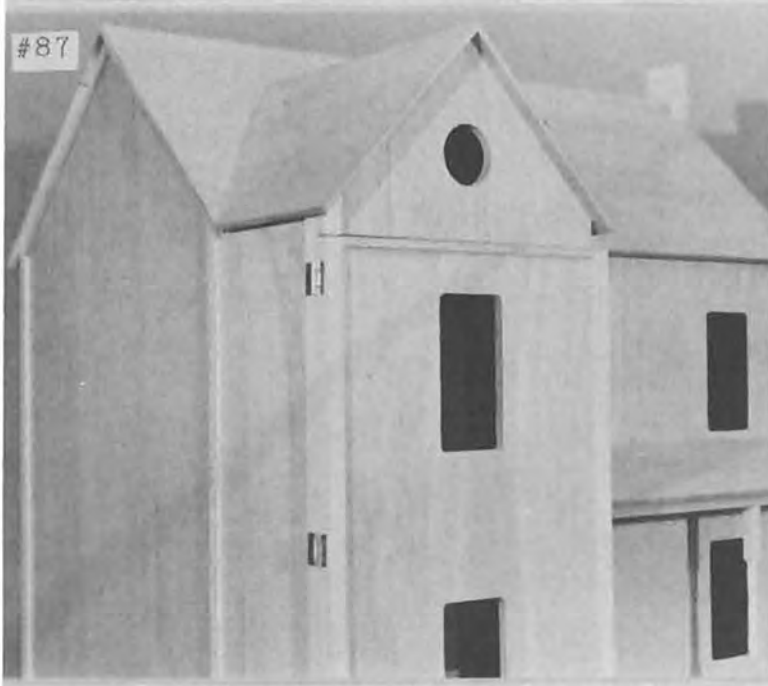
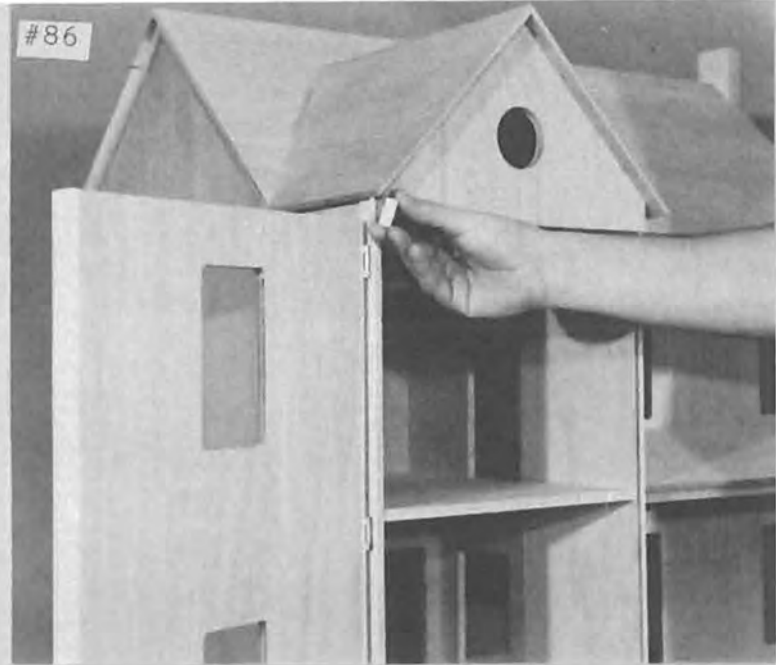
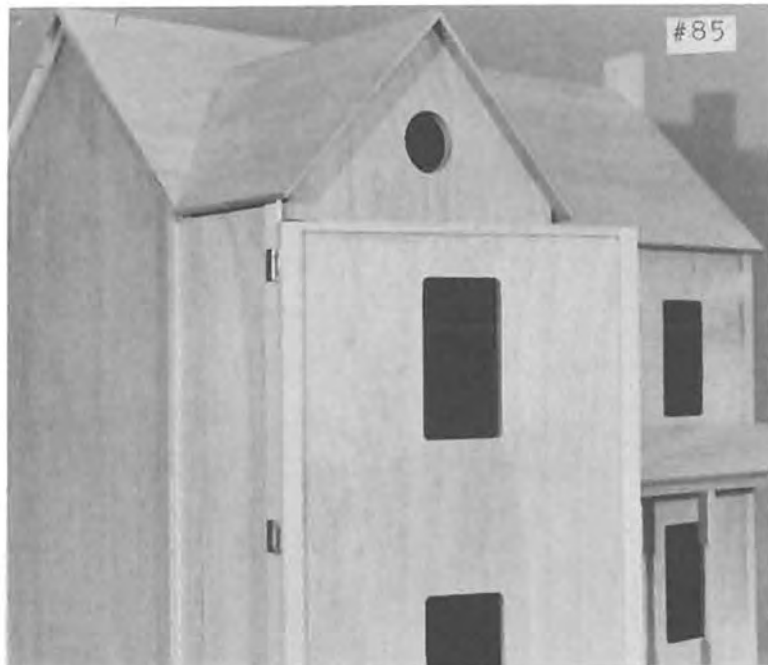
#66



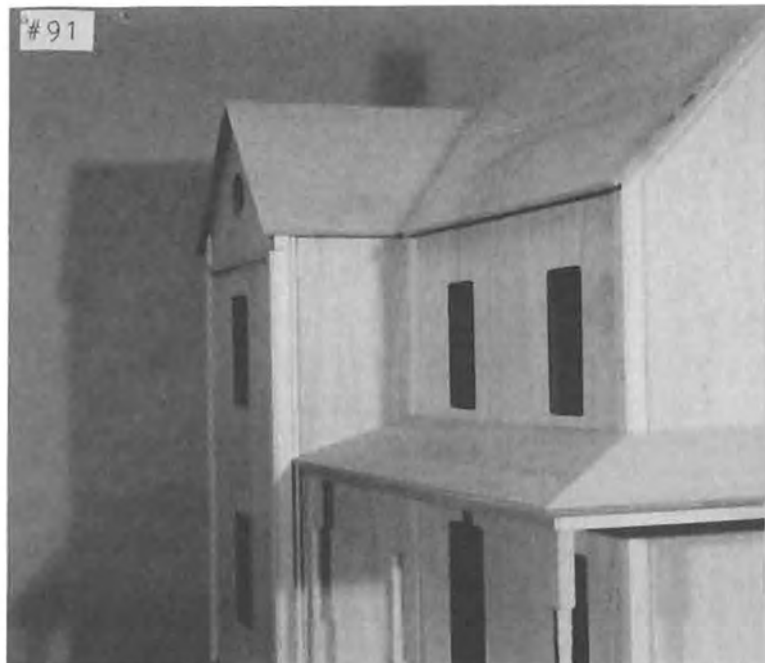




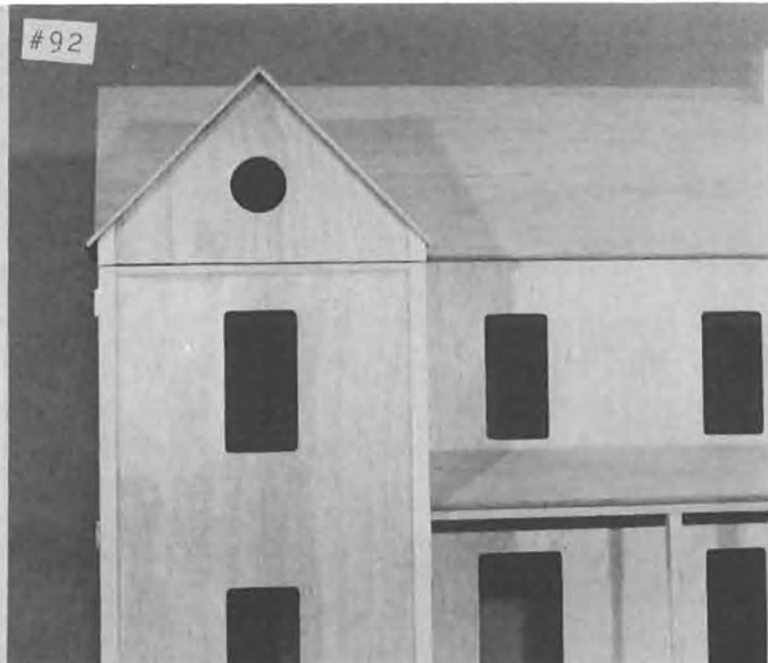




#91



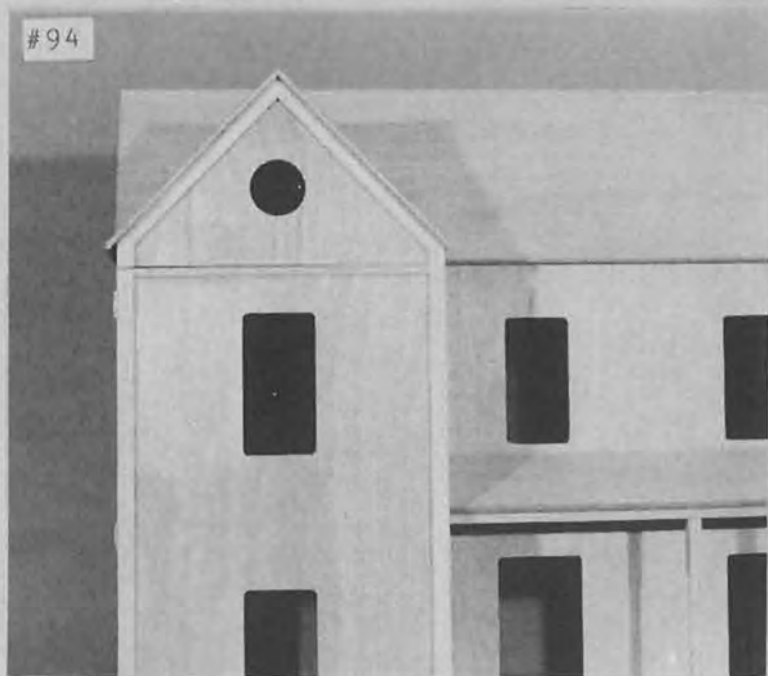
#92



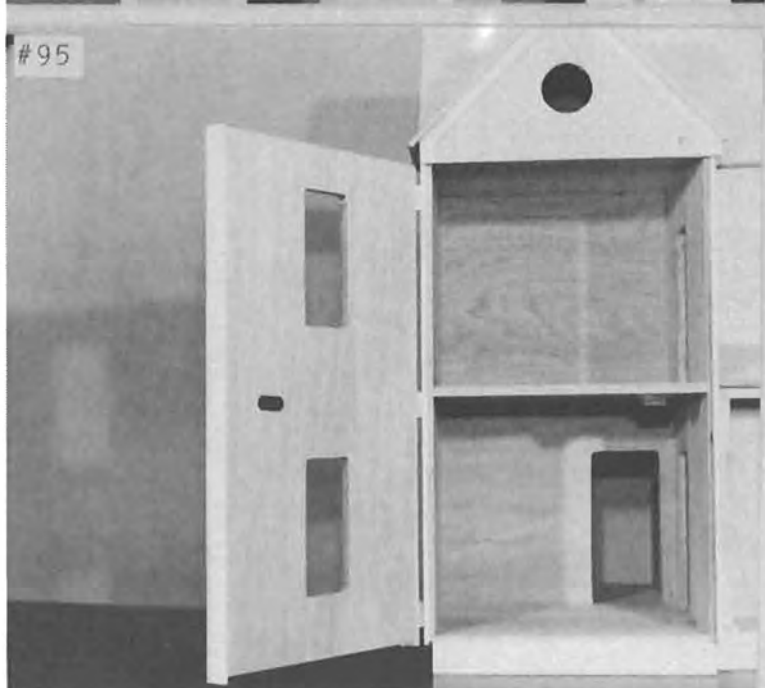
#93



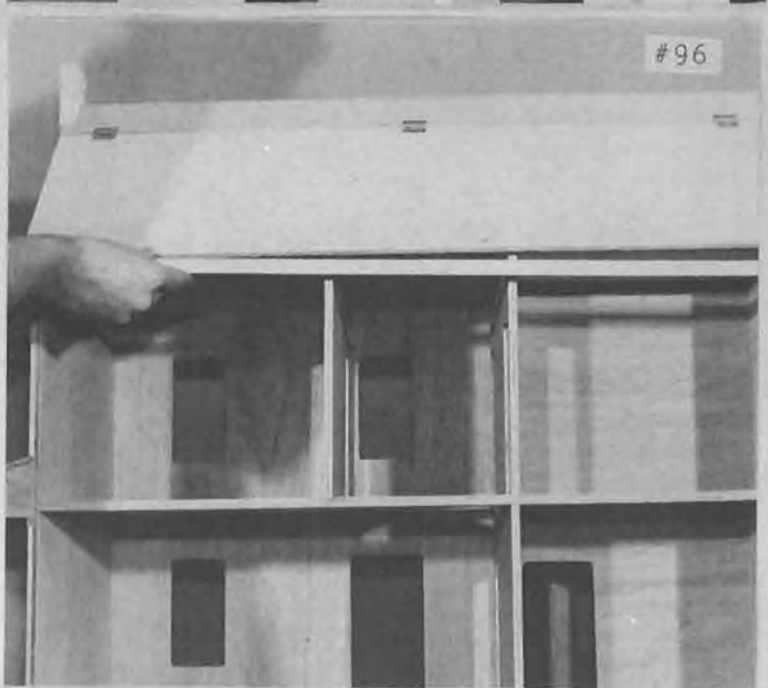
#94



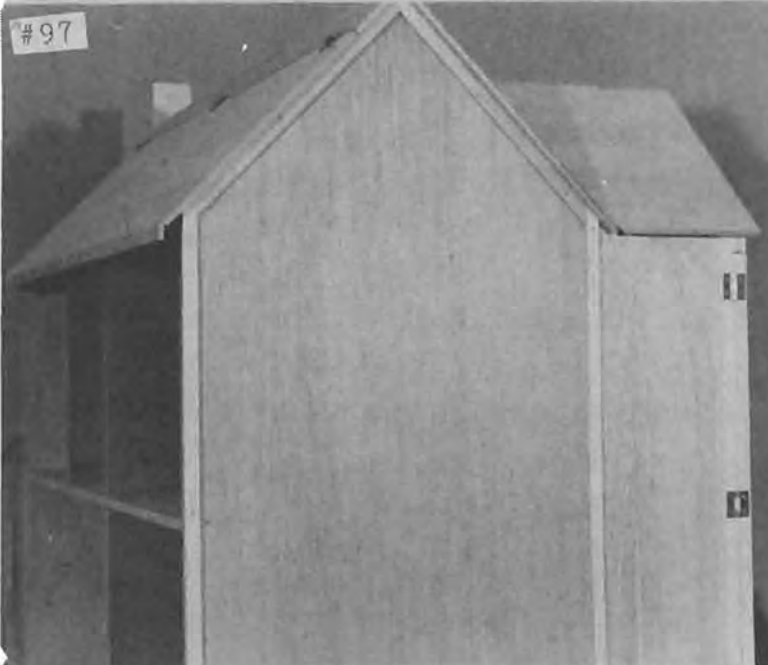
#95



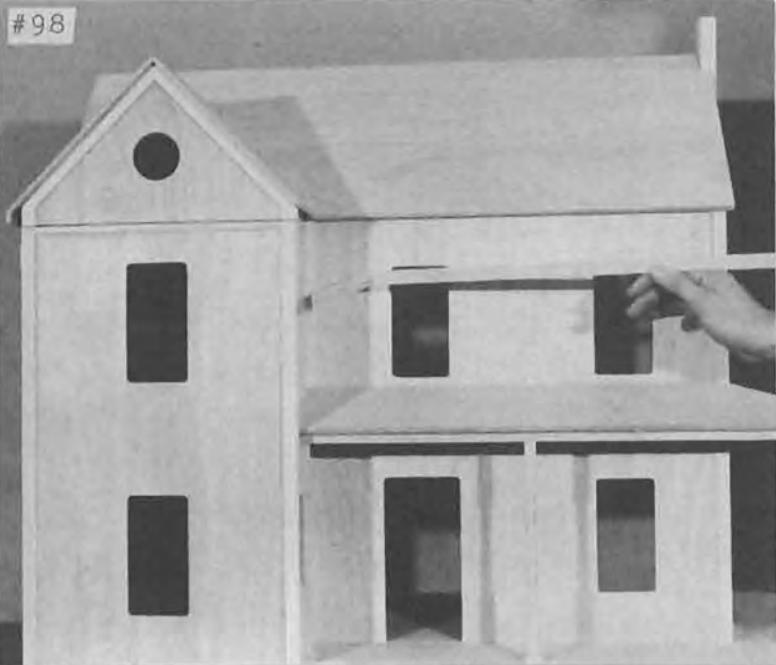
#96



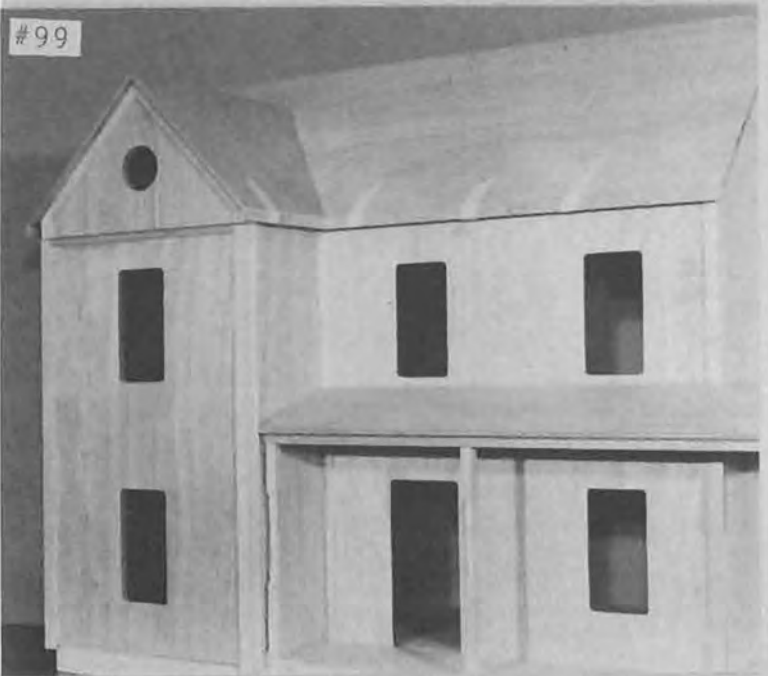
#97



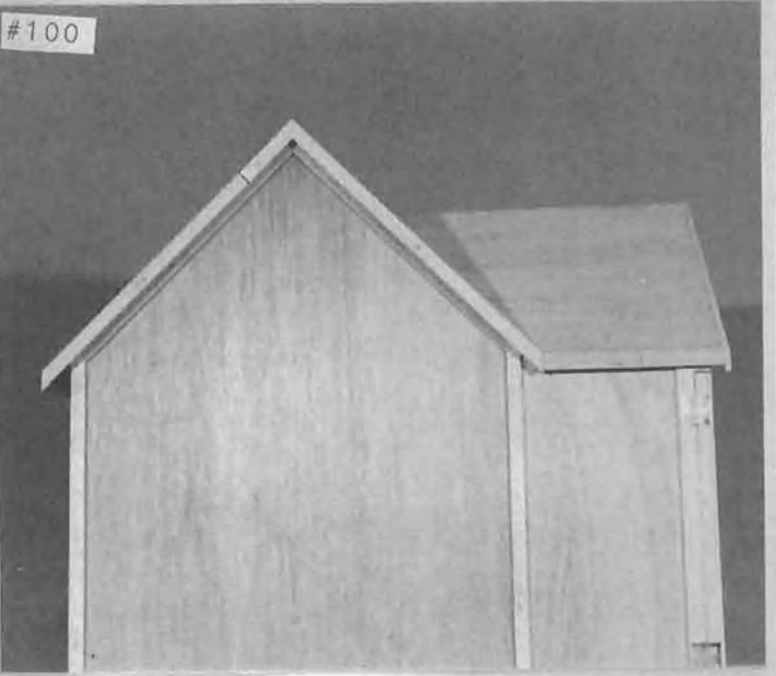
#98



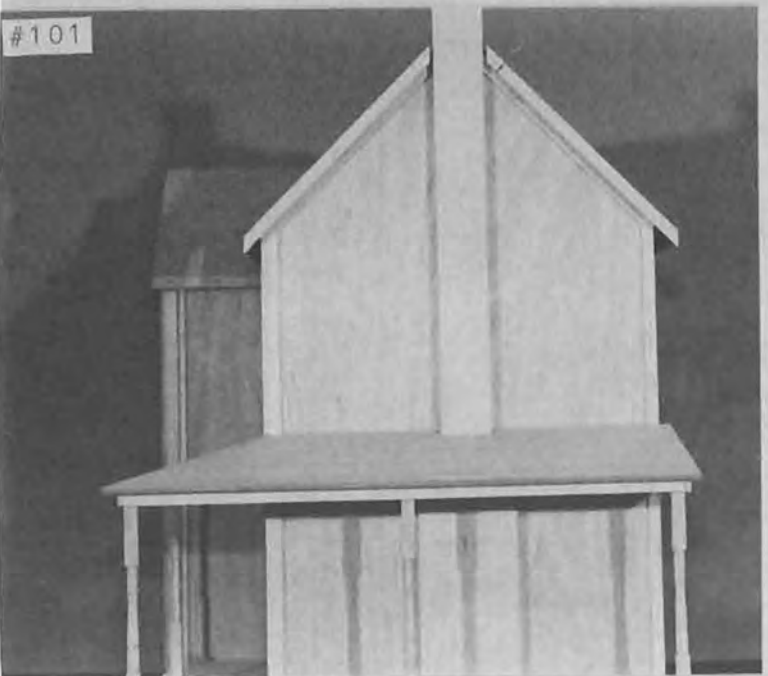
#99



#100



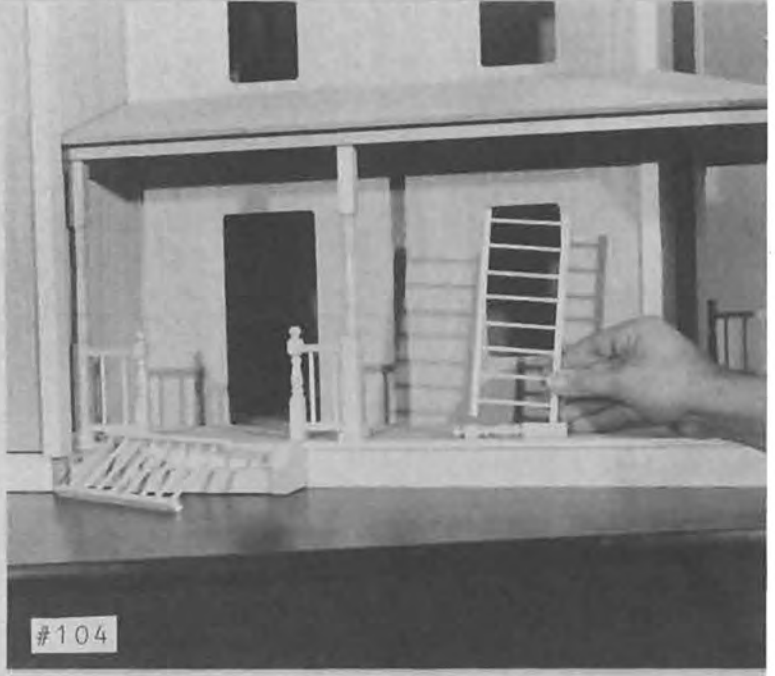
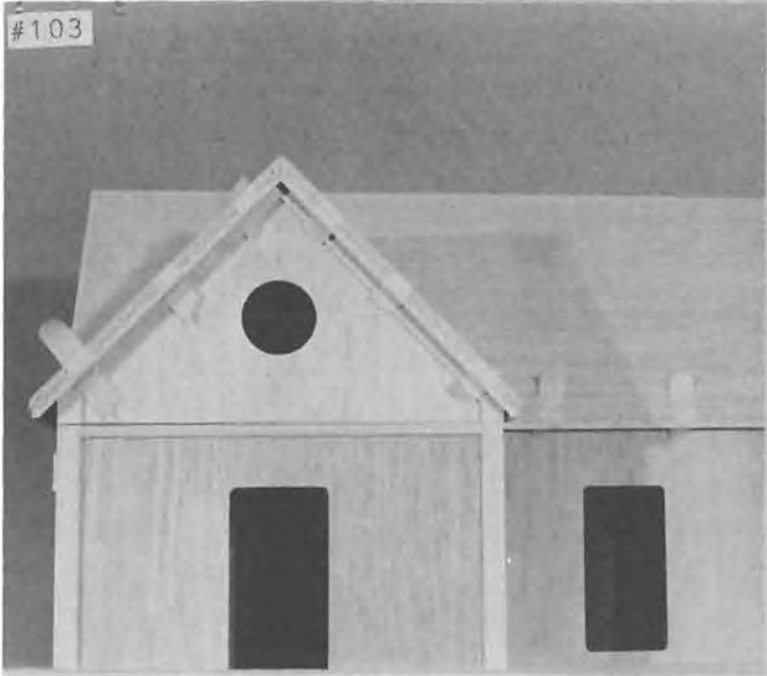
#101



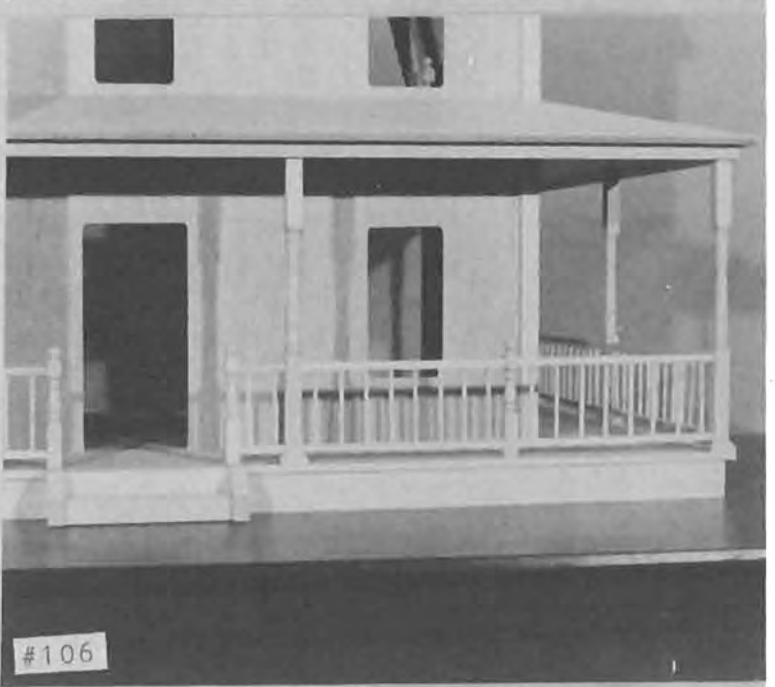
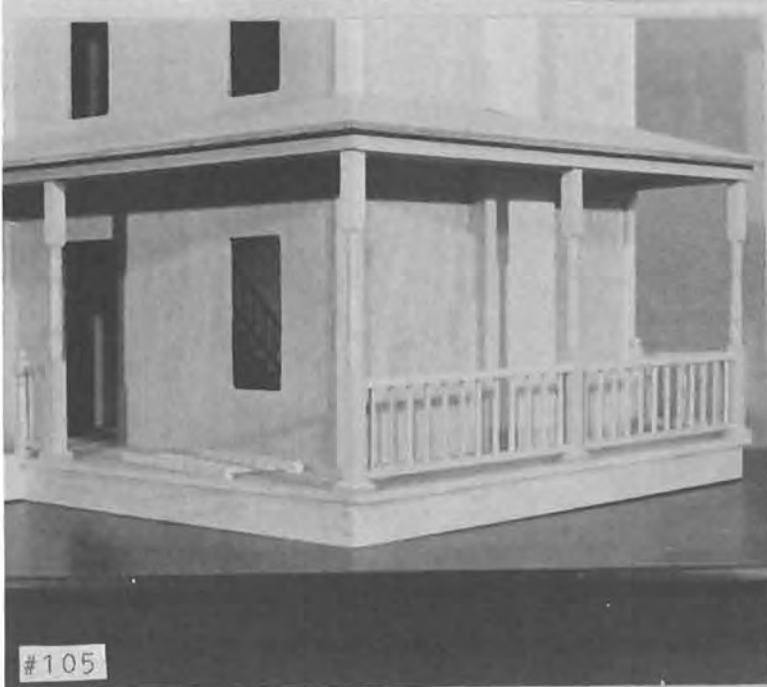
#102



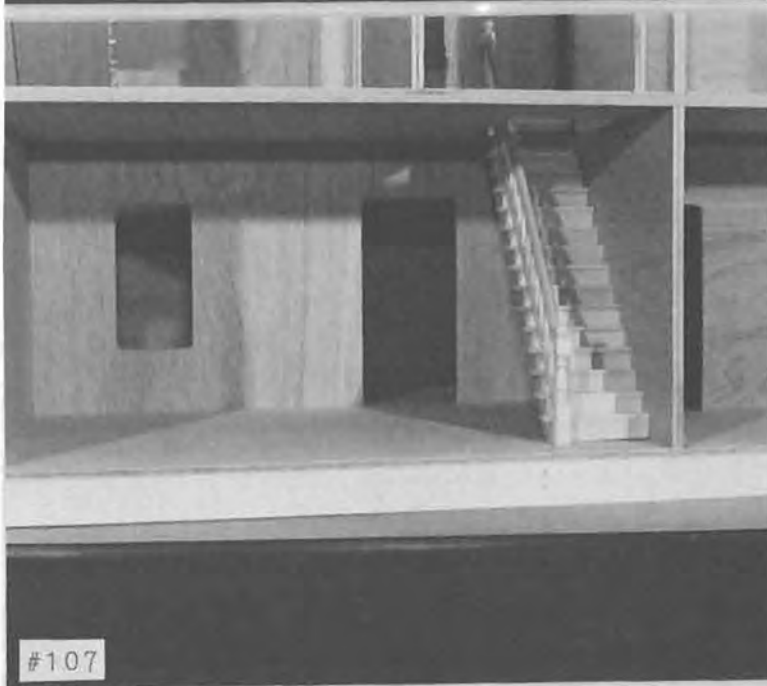
#103



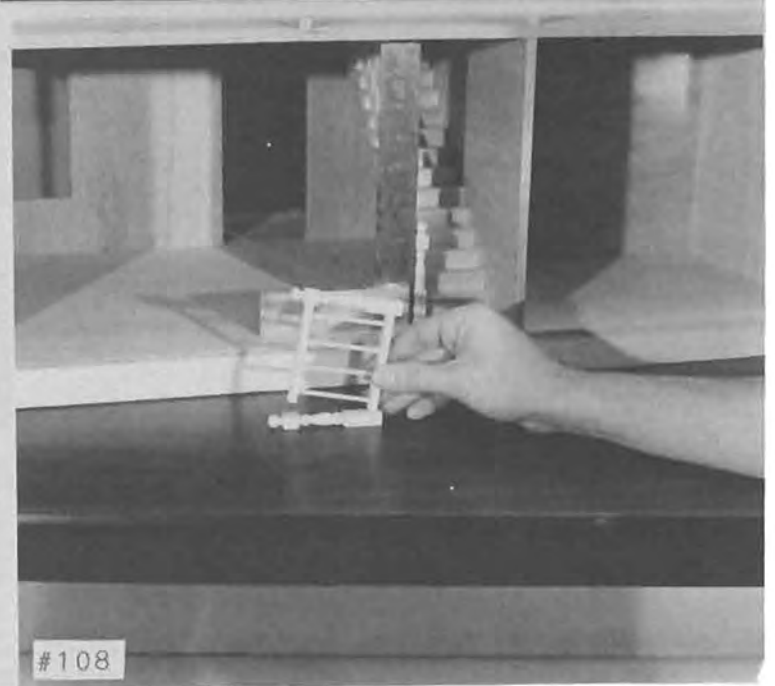
#104



#106



#105



#107

#108

