

# Theresa Dollhouse

## Assembly Instructions

Thank you for your purchase of the Theresa Miniature Dream House. We trust you'll have as much fun assembling and decorating your house as we did designing it.

### Your kit contains:

- \* 15 Pre-cut wood sheets.
- \* 1 Pre-cut plastic window sheet.
- \* 6 Pre-cut shingle sheets.
- \* Assembly Instructions.

### IMPORTANT BEFORE YOU BEGIN BUILDING . . . .

A. Find a well lit work area with a flat surface - preferably one where you can leave the house in place until it is assembled.

B. Follow the assembly instructions in order. Your house is designed for tab and slot assembly, and the instructions are written in order for the pieces to fit correctly and for room access in decorating.

C. You will need sandpaper (any fine grain will do) and Hot Melt or wood glue. If you use wood glue, you will need clamps or masking tape to hold the wood parts together until the glue sets. **ALWAYS USE WHITE GLUE on the PLASTIC WINDOWS as HOT MELT will melt the plastic.**

D. The instructions are written and parts named assuming the front of the house is facing you, the back is furthest away from you, the right side is to your right and the left side is to your left.

E. Throughout the assembly instructions you'll find numbers in parenthesis like (7). These numbers tell you which wood sheet that part is on. You'll also find the bold letters **R&P**. This quaint shorthand stands for "Remove and Prepare". By this we mean punch out from the wood sheet the part requested in the instruction, then sand, seal, paint, or otherwise decorate it prior to assembly. You'll also see (G). This simply means glue permanently, (GL) means glue lightly, this is a temporary joint. **Don't glue anywhere except as specifically noted.** This allows the parts to move during assembly. For all steps check the fit of parts before any glue is applied.

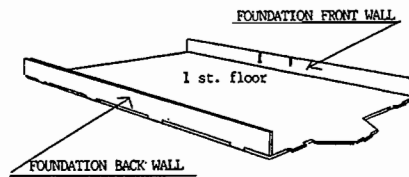
F. If you plan to paint your house, we recommend you sand the wood lightly, seal the wood with a primer or 50-50 shellac and natural alcohol mixture and lightly sand again. You may use any good quality semi-gloss interior latex paint on the wood.

G. **The better side of the wood**, the side where the cuts are most clearly visible, is normally the top surface of floors and the outside of walls.

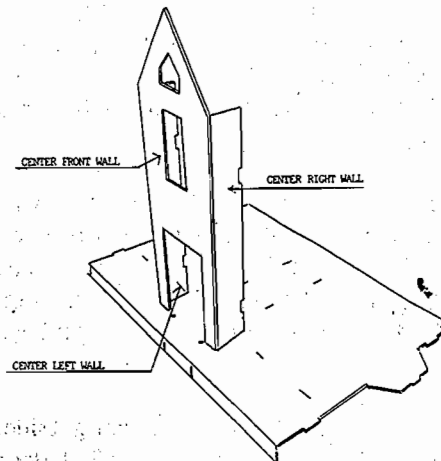
\* **Don't Force Anything!** A tab may occasionally fit too tight. Remove a bit of material with sandpaper or a model knife.

### NOW YOU CAN BEGIN ASSEMBLING YOUR DOLLHOUSE . . . . .

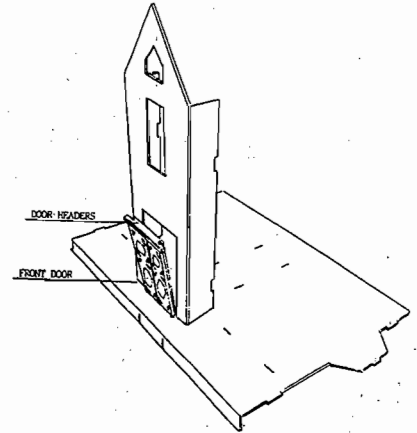
Step 1. **R&P** foundation front & back (4). **R&P** 1st floor (11). Lightly pencil front, back left and right sides on the floor piece. Turn floor good side down on table. (G) foundation front & back to 1st. floor. Then turn assembly right side up.



Step 2. **R&P** center front wall (6), center front left side wall (5), and center right side wall (10). (G) center wall into first floor slots, then (G) center wall left & right sides to center front wall with notch facing the back of house.

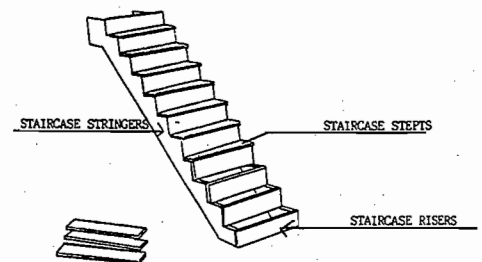


Step 3a. **R&P** 4 front doors (4). Remove door plastic. Sandwich window between front & back of each door. **R&P** 2 door headers (4). (G) headers together. Insert top tab of each door into a header hole. **DONOT GLUE** - hold with masking tape. Insert bottom tab of each door into holes in 1st. floor. Then slide header into top of door opening. Check fit to see if doors may need light sanding to open freely before glueing. (G) header only to center wall.

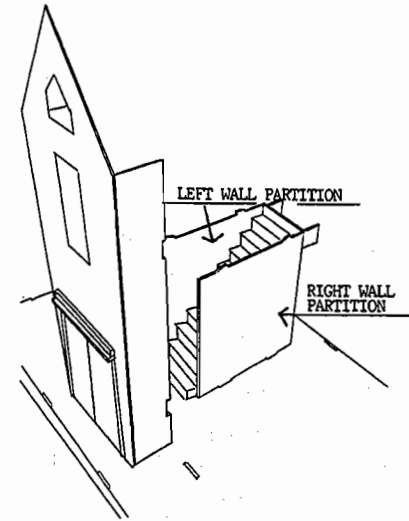
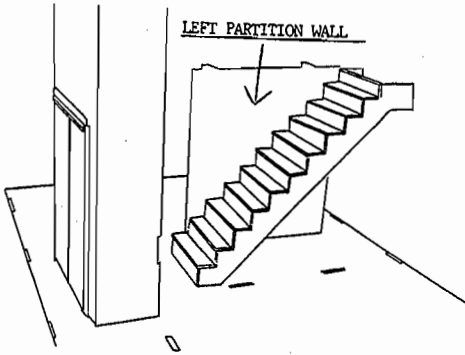


Step 3b. **R&P** door trim (6). Remove 6 pieces of front door trim (3 interior & 3 exterior pieces - interior pieces are longer and wider). (G) trim around interior and exterior door opening.

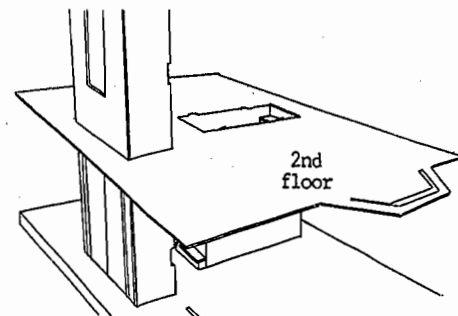
Step 4. Staircase: **R&P** 2 staircase stringers (sides) (14), 11 risers (13), and 10 steps (10). Place bottom riser to bottom of both stringers and (G) each end of riser flush with outside edge of each stringer. (G) top riser in same manner to top of each stringer. (G) remaining risers to finish staircase. (G) staircase steps above each riser flush with outside edges of staircase stringers. Second floor becomes the top step of staircase.



Step 5. R&P interior left and right 1st. floor partition walls (13). (G) left partition wall in first floor slots. Next (G) pre-assembled staircase facing front so top riser is flush with top of left partition. 1st. step will be in front of partition and last step is formed by the second floor. Now (G) in place the right partition wall.



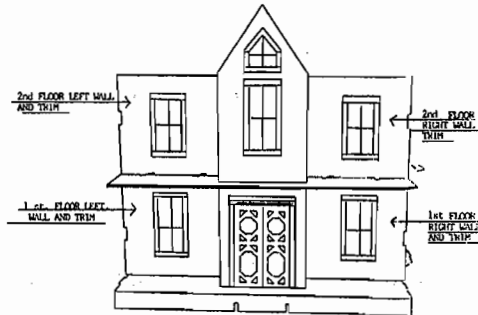
Step 6. R&P 2nd floor (7). Punch chimney back from this piece and set aside. Sand center front wall slots and bay window slots for ease of later insertion of bay window sides. Slide 2nd floor down over front wall and into tabs on 1st. floor partitions. (G) at partitions.



Step 7a. R&P center wall window trim (6). 4 pieces top & bottom interior & exterior trim and 4 pieces side interior & exterior trim. (G) exterior side trim on first to rectangular window opening and then top & bottom trim above and below. (G) plastic window to interior opening next and then repeat for interior window trim.

Step 7b. Center wall small top window. R&P 2 pieces top trim interior & exterior (5&6). R&P 4 pieces side trim and 2 pieces bottom interior and exterior trim (6). (G) exterior bottom trim first, side trim next and then top trim. (G) plastic window to interior opening and then repeat for interior window trim.

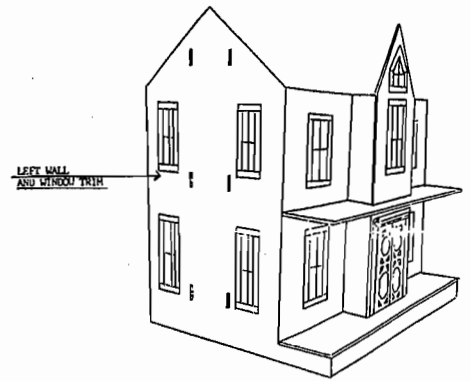
Step 7c. 1st. & 2nd floor front walls. R&P 2 pieces 1st floor front wall right & left (1). R&P 2 pieces 2nd. floor front walls right & left (1). R&P 1st. floor window trim 8 interior & exterior side pieces & 8 interior & exterior top & bottom pieces (1). (G) 1st. floor side trim first then top & bottom trim. (G) plastic window to interior openings. (G) interior trim next. Repeat for 2nd. floor trim & windows.



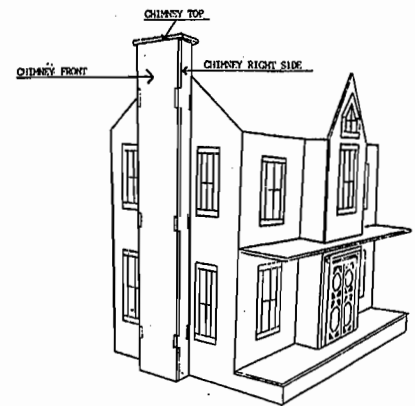
Step 8. Insert 1st. floor left wall to the left of center wall between the 1st. and 2nd. floor (G). Insert 1st. floor right wall to the right of center wall between the 1st. and 2nd. floor (G). Repeat for 2nd. floor right & left front walls (G).

Step 9a. R&P left wall (5). R&P left wall window trim 16 side trim pieces and 16 top and bottom trim pieces (1). (G) exterior side window trim on first then top & bottom trim. (G) plastic windows to interior openings. Repeat for interior window trim.

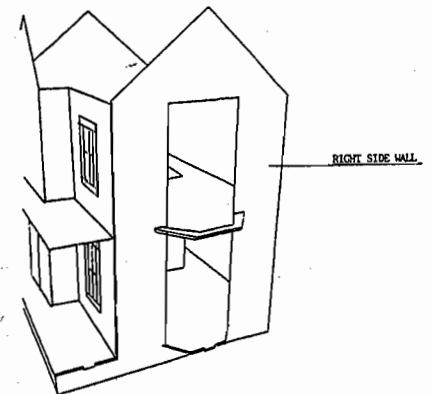
Step 9b. Carefully lay house on its right side. Line up left wall so tabs in 1st. & 2nd. floor line up with slots in left wall (G).



Step 10. R&P chimney pieces front, left & right sides (12). R&P 1 piece chimney top (9). Now find the chimney back piece that you set aside from (7) in Step 6. Align tabs of left & right chimney sides in slots of left wall (G) both pieces. Align chimney front with tabs on chimney sides (G). Align chimney back flush with chimney sides & top (G). (G) chimney top.



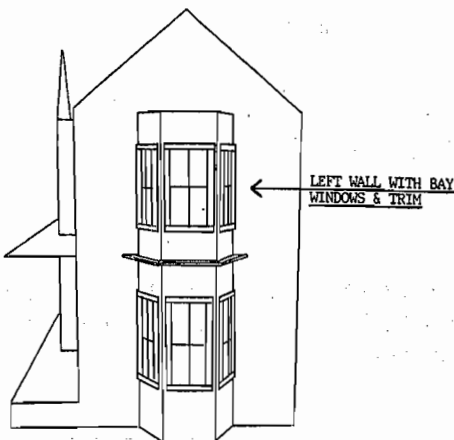
Step 11. R&P right side wall (10). Lay house on left side. Slide right wall through bay 1st. & 2nd. floor slots. Align right wall with tabs on 1st. & 2nd. floor (G).



Step 12a. R&P 3 pieces bay windows (9). R&P bottom bay window trim-4 side pieces (9), and 20 pieces on (10), (these have the longer side pieces). (G) only 1st. floor exterior window trim on first. Then (G) plastic window to only interior 1st. floor window openings. Now (G) only interior 1st. floor window trim. (Do not glue 2nd. floor trim on yet because these pieces have to slide up through bay slot in 2nd. floor).

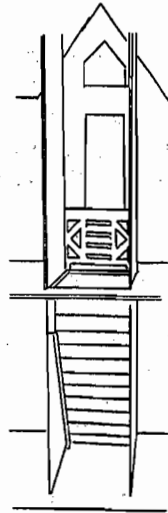
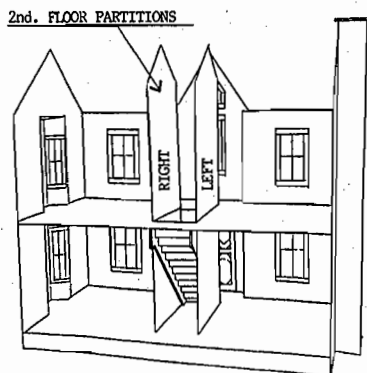
Step 12b. Lay house on left side. You need to slide the bay window front up through the slot from the bottom of the 2nd. floor (G) to 1st. floor. Slide left bay window side up through slot from the bottom (G). Repeat for the right bay window side (G).

Step 12c. R&P 2nd. floor bay window trim, 4 side trim pieces (9), and 20 pieces (10), (these have the shorter side pieces). (G) exterior window side trim first, then top & bottom trim. (G) plastic windows to interior window openings. (G) interior side window trim and then top & bottom window trim.



Step 12d. R&P bay window roof (5). (G) roof on top of bay.

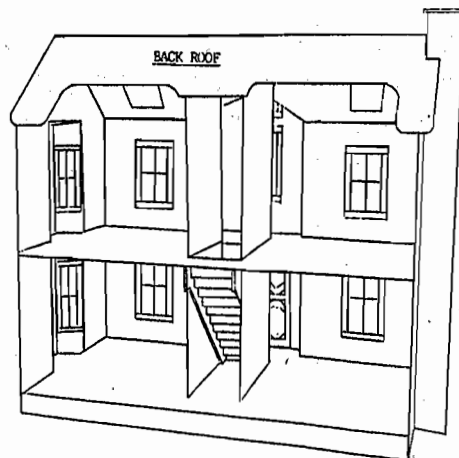
Step 13. R&P left & right 2nd. floor partitions (13). (G) left and right 2nd. floor partitions into slots of 2nd. floor (good sides of wood facing out away from stair opening). R&P stair case railing (5) and (G) to 2nd. floor partitions.



Step 14a. R&P front roof (2). (G) front roof to front left & right walls & 2nd. floor partitions.

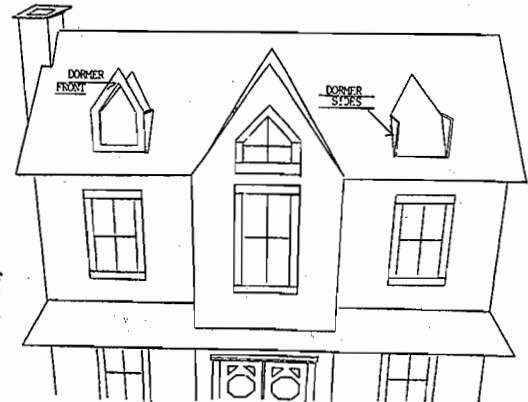


Step 14b. R&P back roof (3). (G) back roof to second floor partitions and left & right walls.



Step 15a. Front dormers. R&P 2 dormer fronts, 4 dormer sides (9) and 4 dormer roofs (4). (G) dormer sides to front roof, flush with dormer openings. (G) dormer front flush with dormer sides.

Step 15 b. The pieces for the right side of the left dormer roof and the left side of the right dormer roof are slightly smaller. (G) these small pieces on each dormer first, then (G) the second roof side on each dormer flush at the peak with the other side.



Step 16. Center wall roof. R&P right & left center wall roofs (15). (G) right side of roof on center peak 1st, then (G) left side of roof on center peak the same as dormer roofs.

Step 17. (See page 4 for illustrations)  
HOUSE TRIM:

R&P 4 pieces of A-1 second floor vertical trim, 4 pieces of A-2 second floor center wall vertical trim, and 2 pieces of A-3 second floor left & right side vertical trim (8) and (G). R&P 8 pieces of B first floor vertical trim (8) and (G). R&P 2 pieces of C center wall 2nd. floor bottom right & left side horizontal trim (6) and 2 pieces of C center wall 1st. floor bottom right & left side horizontal trim (8) and (G). R&P 1 piece of D second floor bottom center wall horizontal trim (8) and (G). R&P 4 pieces of E first & second floor bottom horizontal trim (8) and (G).

PEAK TRIM:

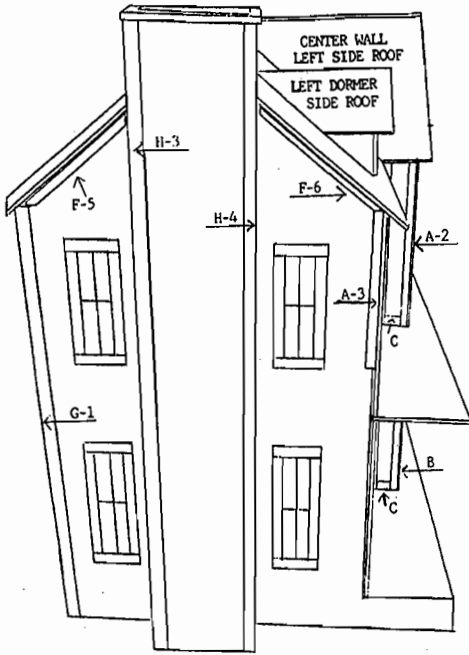
R&P F-1 right wall back peak trim and F-2 right wall front peak trim (6) and (G). R&P F-3 center wall left peak trim and F-4 center wall right peak trim (5) and (G). R&P F-5 left wall back peak trim and F-6 left wall front peak trim (8) and (G).

BACK SIDE VERTICAL TRIM:

R&P G-1 left wall back trim (8) and G-2 right wall back trim (9) and (G).

CHIMNEY TRIM:

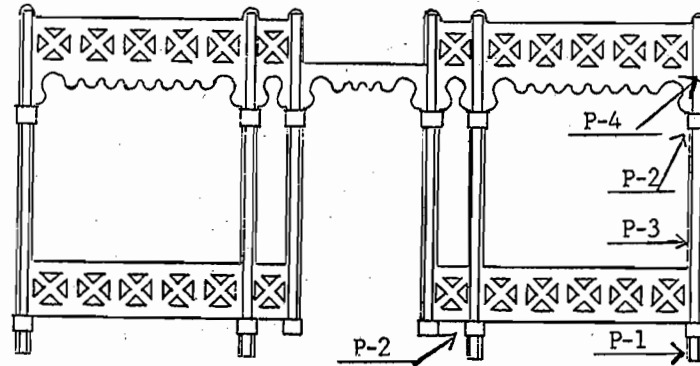
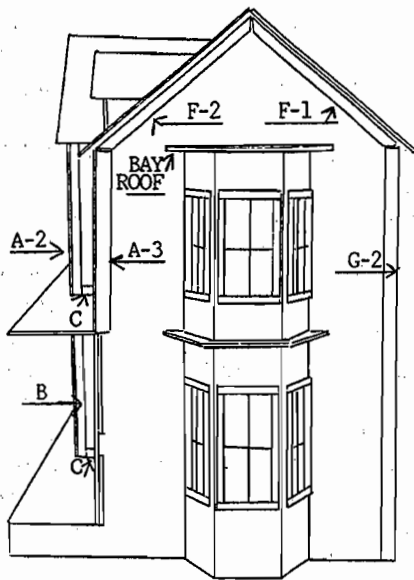
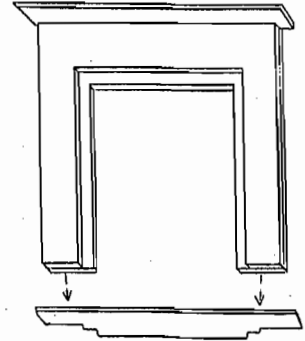
R&P 4 pieces of H-1, H-2, H-3, & H-4 vertical chimney trim (8) and (G). Note: The two side trim pieces are narrower than the front trim pieces.



Step 18. Front Porch Steps. R&P 2 porch step supports, 1 porch step, and 1 porch step riser (3). (G) porch step supports into the slots on front porch foundation. (G) riser to front of supports. (G) front step on top.

Step 19. Porch. R&P 1 porch front (14) and 2 porch sides (4). R&P 8 pieces of P-1 porch trim (13) and (G) to the bottom of the 8 porch posts. R&P 22 pieces of P-2 porch trim (13). (G) 10 of these pieces on top of the P-1 pieces and 2 additional pieces on both sides of the steps. R&P 10 pieces of P-3 trim (14) and (G) 10 long porch trims above the P-2 pieces. Now (G) the remaining 10 pieces of P-2 trim above the P-3 trim pieces. R&P 6 pieces of P-4 trim (14) and 4 pieces of P-4 trim (4) and (G) above P-2 trim pieces.

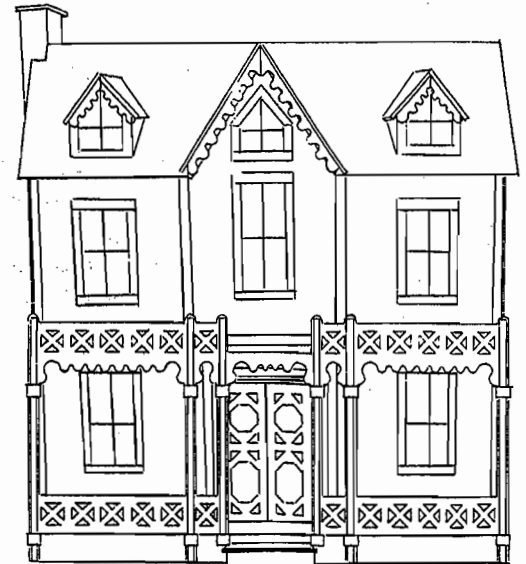
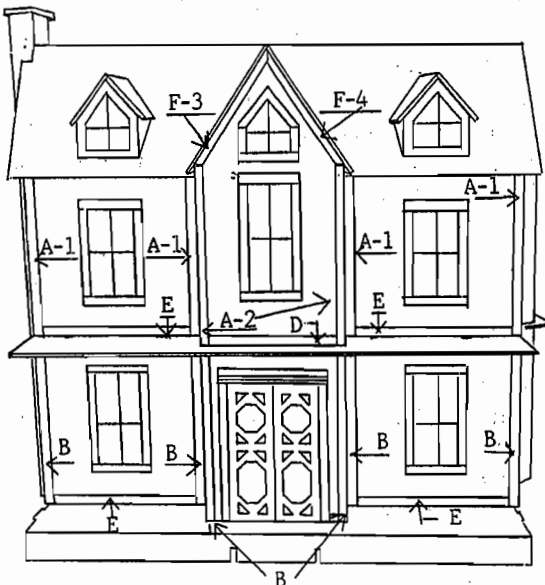
Step 22. Fireplace. R&P Fireplace front, fireplace front trim, and fireplace hearth & mantle (15). Place fireplace front face up. Lay fireplace trim on top, align flush at top & side. (G). Stand assembly up, insert hearth into opening flush at the bottom edge of fireplace & (G). Center mantle on top of fireplace flush with back & (G).



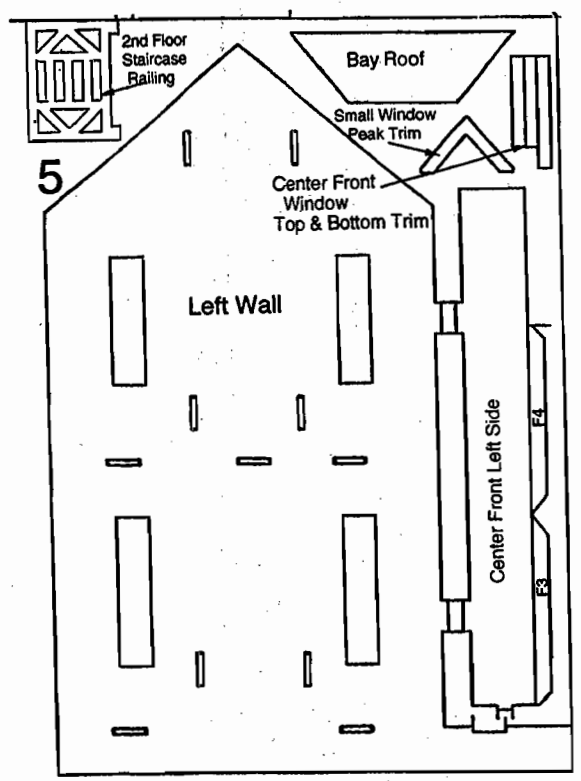
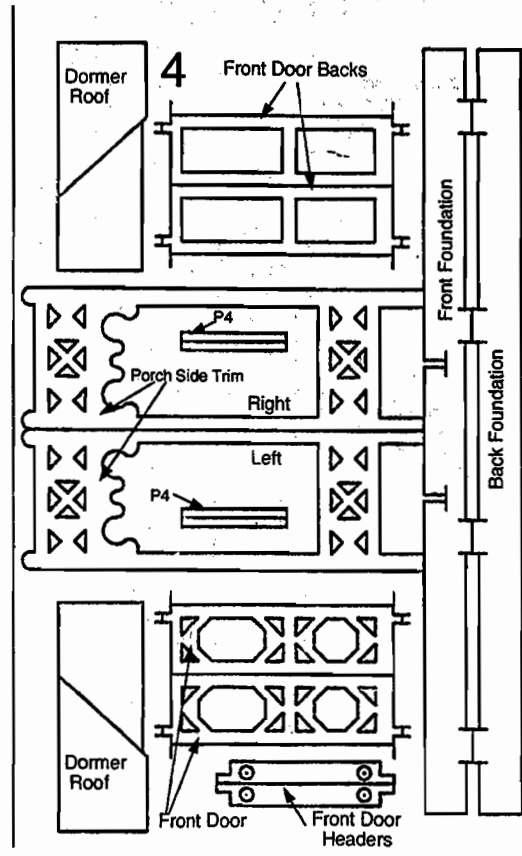
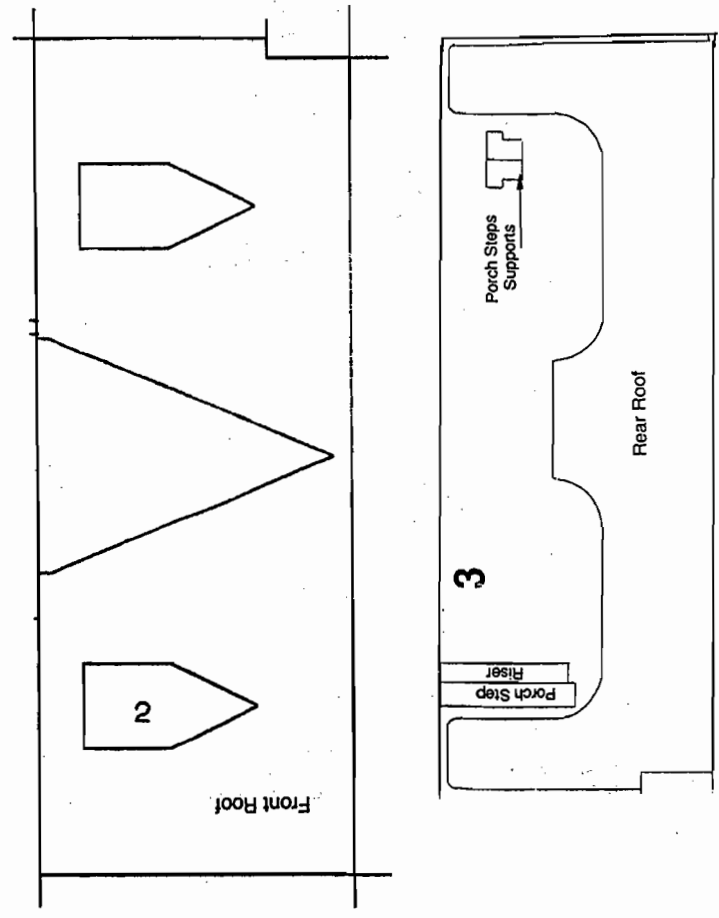
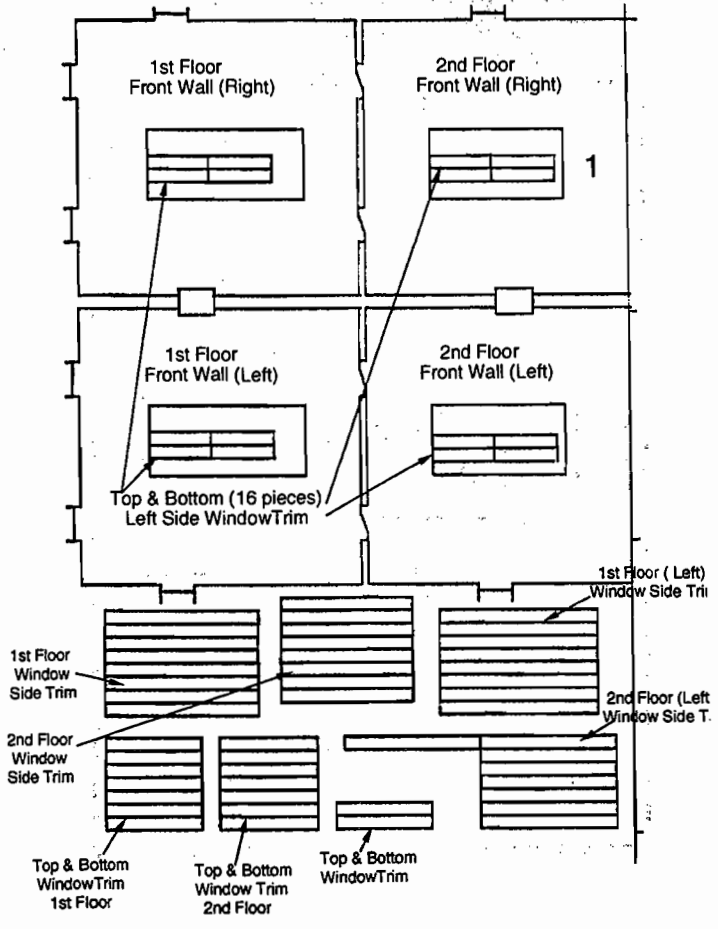
Step 20. Now (G) left porch side to left side of house flush with the front left edge of house foundation. Repeat for right porch side. (G) each end of the front porch piece to the ends of the left and right porch sides.

Step 23. Peak roof trim. R&P 2 pieces peak trim (13) and (G) to underside of center wall peak roof.

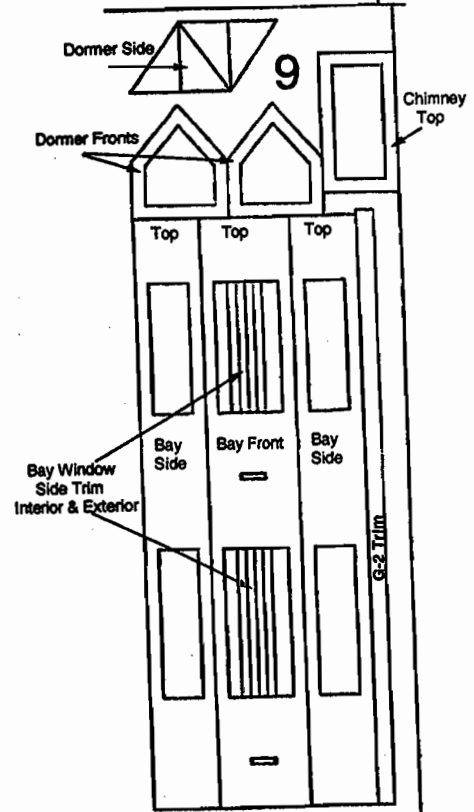
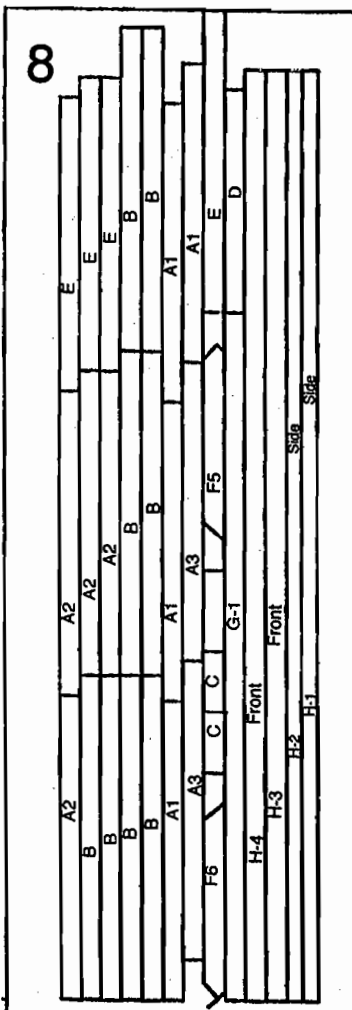
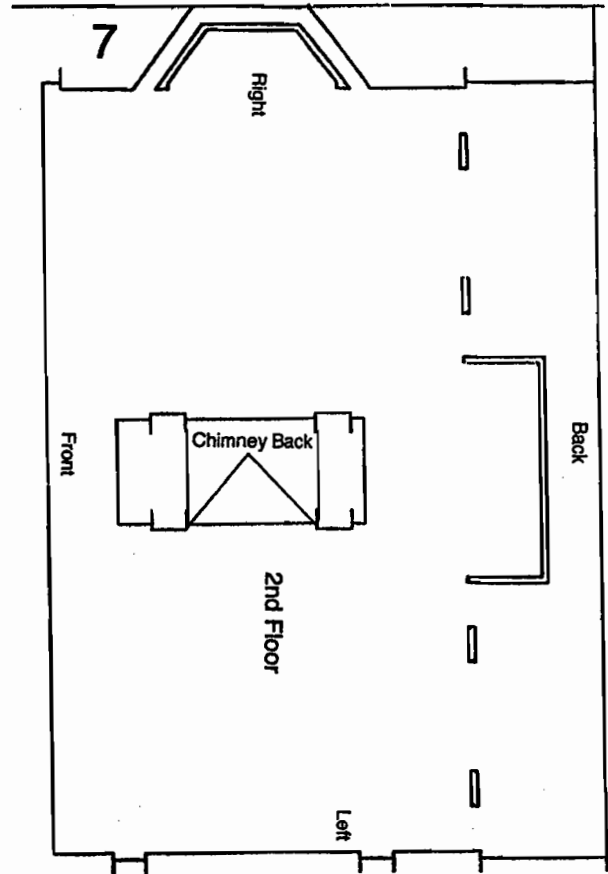
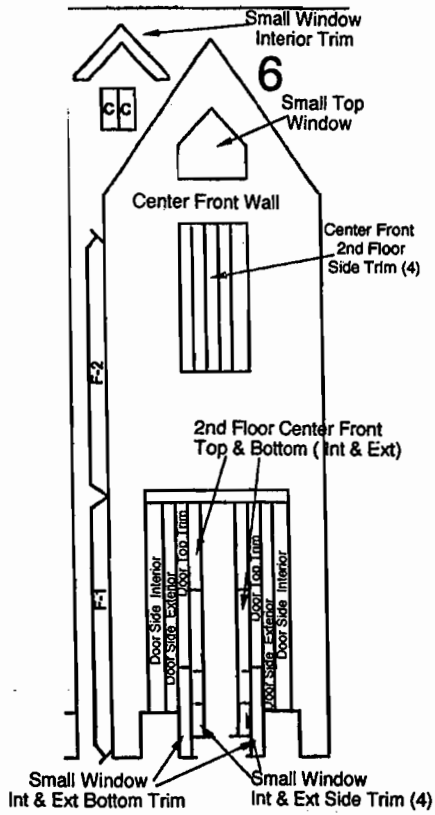
Step 21. Dormer window trim. R&P 4 dormer trim pieces (14) and (G) to under side of dormer roofs.



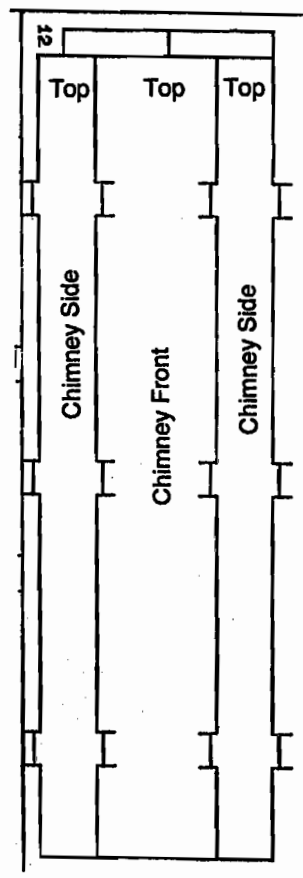
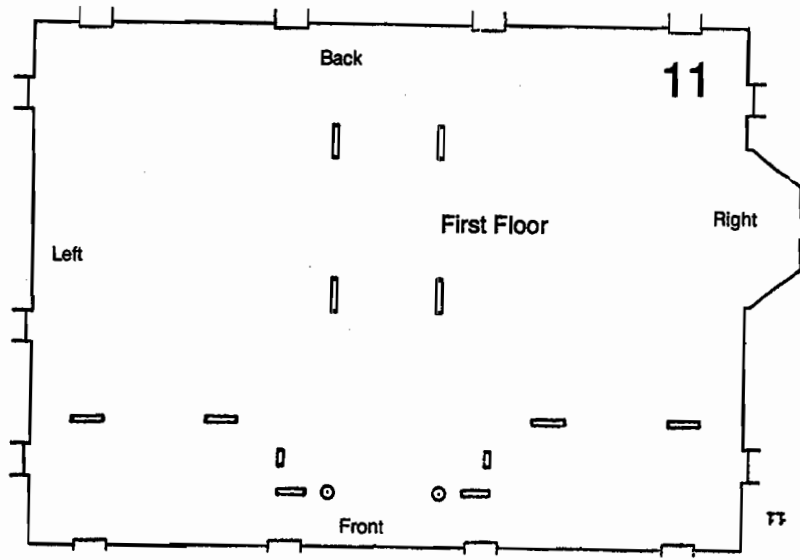
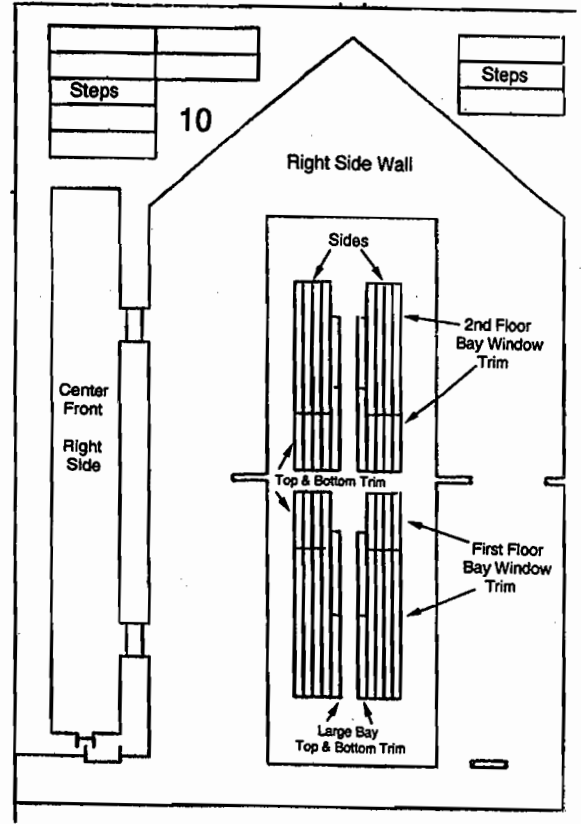
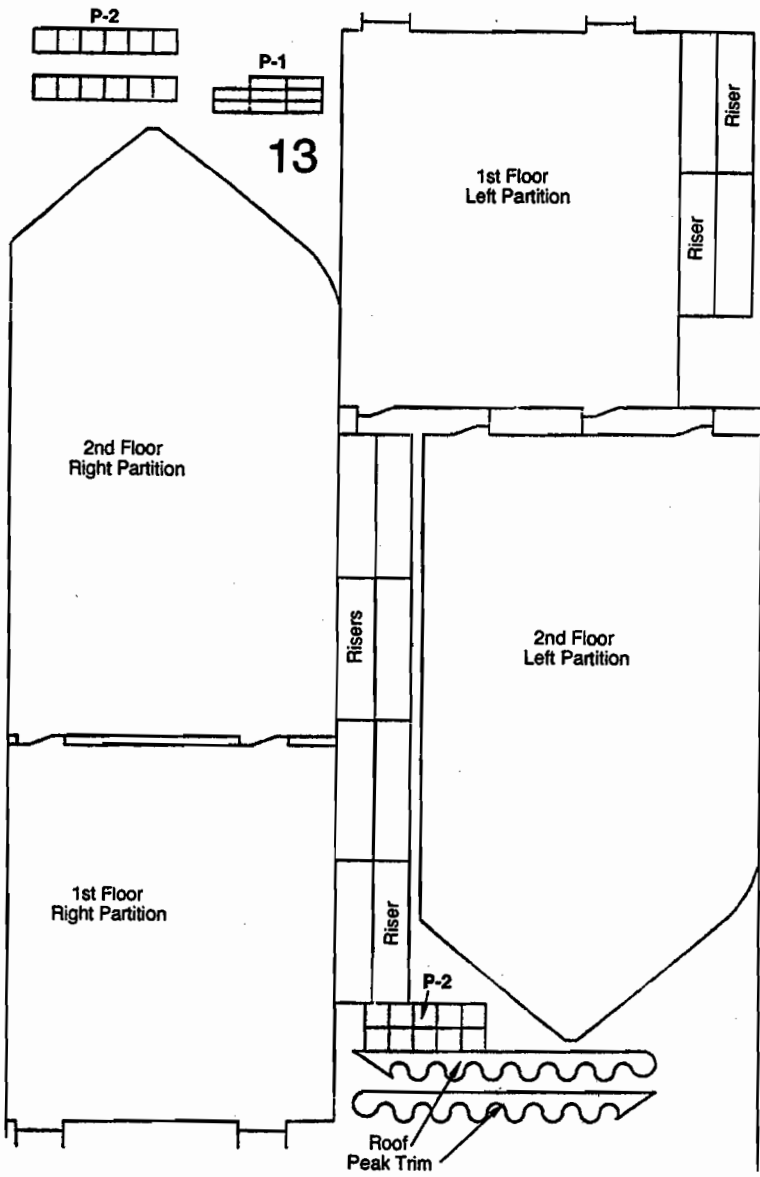
**Congratulations! You have just finished building your "Theresa" and are now ready to paint & decorate.**



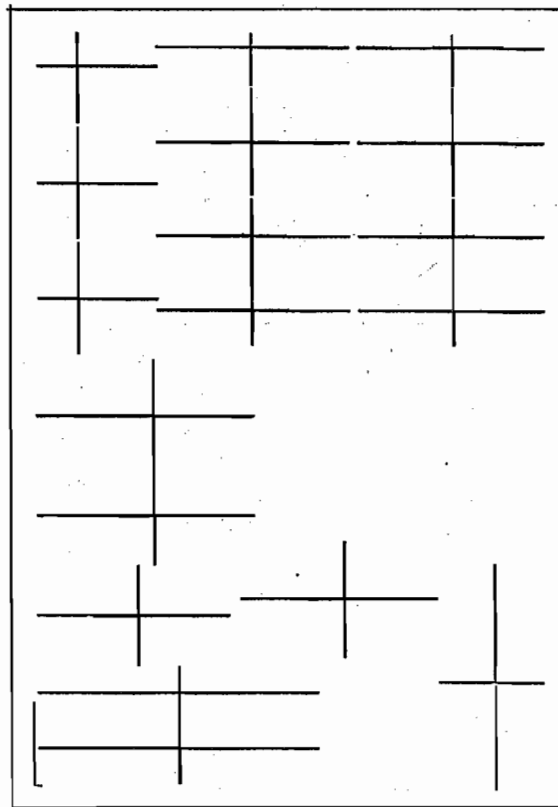
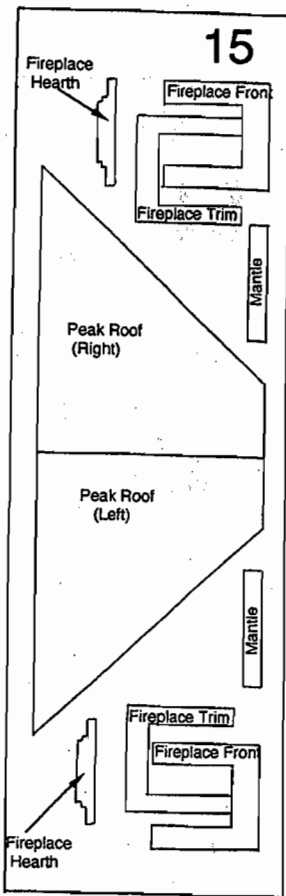
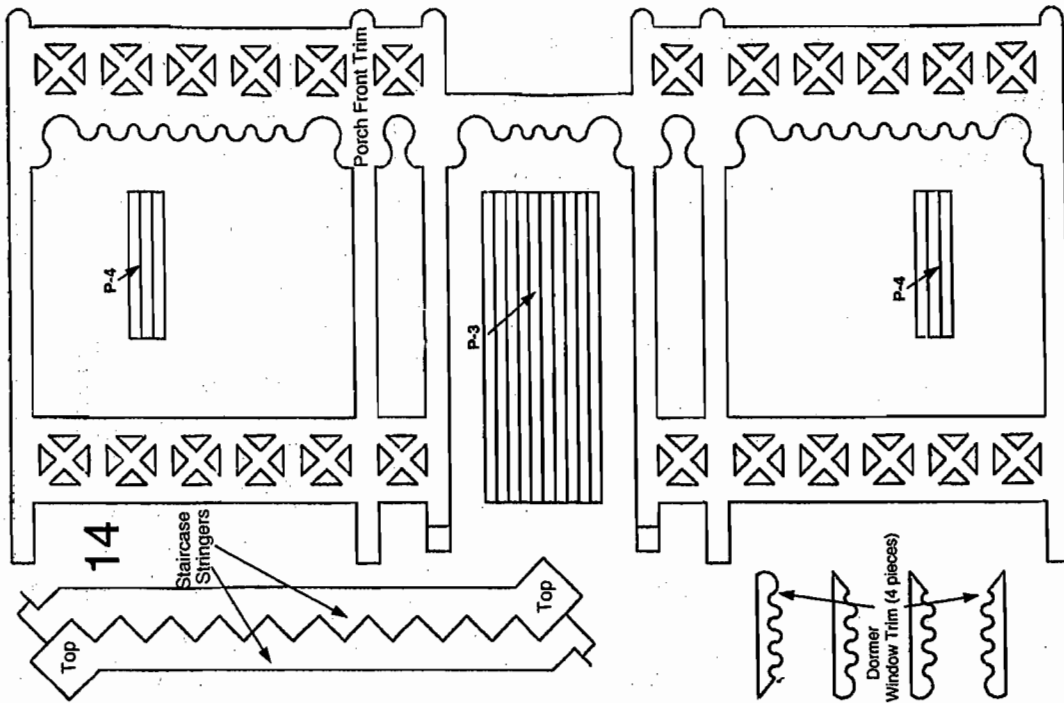
**Schematics Sheets 1, 2, 3, 4 & 5.**



Schematics Sheets 6, 7, 8, & 9.



Schematics Sheets 10, 11, 12, & 13.



Schematics Sheets 14, 15, & Windows.