

The ALLISON DOLLHOUSE KIT MODEL NO. 77



The ALLISON DOLLHOUSE KIT contains 12 numbered die-cut wood sheets, 1 plastic windows sheet, sandpaper, instructions and schematic parts diagram with Template. Have on hand any household glue suitable for wood, masking tape, pencil; also any hardware, paint, miniature wallpaper, etc. you may desire.

READ CAREFULLY THROUGH ALL INSTRUCTIONS BEFORE ASSEMBLING.

IMPORTANT: Before you begin, carefully remove each sheet from box. Leave parts in wood sheet until needed for assembly. Referring to the PARTS DIAGRAM (schematic), lightly mark in pencil the Sheet number and letter designation on each separate piece. This simplifies identification of parts.

ASSEMBLY HINTS:

1. Follow instructions in the order presented. Refer to photo on box during assembly.
2. Before gluing any part, check for proper positioning and fit. Sand parts lightly, where necessary, exercising care when sanding in direction of grain to avoid splintering.
3. Smooth side of wood faces outside surfaces (exterior) of house.
4. Use care in removing windows from plastic sheet so they do not tear. You may want to use scissors.
5. **ORIENTATION:** As you face house from front, left side is to your left. (From rear, left side is to your right.)



NOTE: Should any parts fall out of the wood sheets before marking for identification, REFER TO TEMPLATE DIAGRAM. Match the part to the same size template drawing and mark for identification.

PAINTING: It is easier to paint or wallpaper before assembly. Paint only those parts called for in the step on which you are working. Lay parts on paper and write identification next to each part. All parts to dry away from heat.

A WINDOW & DOOR TRIM

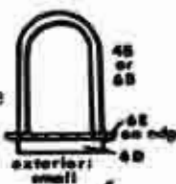
Note: You may want to paint window trim, walls and window panes before assembly.

1. a) Strip out scrap in slots and windows of Right and Left Side Walls, sheets #2 & 3. Place face down on work table.

b) Carefully, so they do not tear, remove 2 smaller rounded windows from Plastic Sheet. Glue plastic on to INTERIOR (back) side of walls using a very thin line of glue outlining window cut-outs.

c) Install INTERIOR frames #6C around the two windows. (Be sure parts #6D & E are marked for identification before removing from sheet).

d) Turn the two walls over and gather EXTERIOR trim parts: Frames #4B & 6B, 2 ledges #6E, 2 bottoms #6D (already removed from sheets). Install frame around each window. Next, apply glue along one edge of 6E and center under frame. Center 6D under ledge.

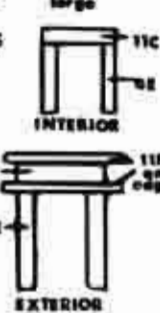


2 a) Strip out 2 Right fronts, (1st & 2nd floor), sheets 4 & 6. Install plastic windows on INTERIOR side.

b) Install INTERIOR & EXTERIOR trim following preceding step 1 d), using 4 frames #4A & 6A, 4 ledges #6F 4 bottoms #6G.



3. a) Gather Interior door trims: 4 sides #4E, 2 Tops #11C. First, glue on side trims (on back side) even with doorways in both Right Front Walls. Install Top Trims.



4. Install EXTERIOR Trim around both doorways using parts illustrated. (#11B is glued on its edge). Decorative top #11A rests over 1st floor trim.

5. a) Strip out Left Front Wall #8. Install plastic in small half-round window at top. Install interior & exterior frames #2A.

6. a) Gather 2 doors and 2 door backs, sheets #10 & 11. Locate 2 plastic windows. Apply glue to back side of door and press against door back, sandwiching plastic in between. (Scalloped cut-out is around window opening).

b) Glue 2 diamonds (from sheet #8) on each door. (See color label) Install doors later.

7. Similarly, assemble balcony French doors & door-backs, #12. Glue on panel insets #12-0, centered in bottom of each door. Doors may be installed later, after doorway trim is installed.

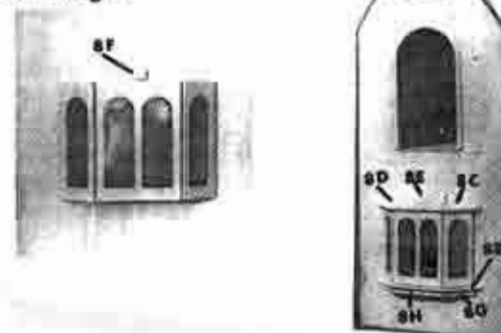
8. For Bow Window gather 3 Bow Frames from sheets #8, 11H, 11H; 2 "seats" #8A.

a) Apply glue along the short straight edge of #8A and press against top of center frame #8. (Top of frame is flush with surface of seat)
b) apply glue along the 2 slanted edges of 8A and install 2 frames #11H on either side.
c) Similarly, glue in other Seat #8A inside bottom of frames.

d) Install plastic in Bow window assembly, bending slightly at perforations to conform to shape.

9. a) Install Bow Window unit over opening in Left Front Wall, #8, with top and bottom "seats" flush with window opening. (If necessary, sand back edges of seats to bring side frames close against house).

b) Glue ledge #8B, centered under bow window, Glue Trims #8G, G, H recessed underneath ledge.



c) Glue spacer #8E onto wall, centered over bow window with bottom edge resting on seat.

d) Install Canopy center #8E with back edge resting on top of spacer, and front edge centered over center window frame.

e) Before gluing, check fit of canopy Left #8D and Right #8C. (Parts Template drawing indicates back edge, which fits against house wall). Glue these parts in place, sanding if necessary.

f) Install Interior Trim #9 I, J around bow window as illustrated.



B WALLS & FLOORS

1. Strip out First Floor, #1 and place on Table Face down. Gather base strips #2 B, B, C, C. Apply glue along one long edge of 2B and install along front underside flush with edge of floor. Next install both side base strips C (side tabs on floor protrude beyond base strips). Install rear strip B. Tape corners until dry. Turn over, floor resting on base strips.

2. Apply glue along left edge of floor (with 3 tabs) and on base strip under it. Install Left Side wall #3, front edge even with floor.

3. Similarly, install Right Side Wall #2. (Shorter slanted edge on top faces front). (Front edge even with floor).

4. Apply glue along bottom edge of Right Front Wall, 1st floor #4 (the one with "grooved" tabs on top) and halfway up front edge of right side wall. Install front wall with tabs in floor slots. Tape corner until dry.



5. Apply glue along bottom edge of Partition, 1st floor #4 and along side edge of front wall with tab (next to doorway). Install Partition; align its top notch over tab on front wall. (Notched edge faces front). Front edge even with floor.



6. Apply glue along Top (tabbed) edges of front wall and partition. Apply glue along both side edges (with tabs) of Second Floor #5 and install floor first inserting 2 tabs on right side into wall.

7. Lay house on its back. Securely glue Left front wall #8 to the house. Be sure it is on square, even with the bottom (base) and left side wall of house.

8. Apply glue to front edge of right side wall and bottom of Right Front Wall, (2nd Floor) #6. Install front wall. Tape corner with side wall.

9. Install Partition (2nd Floor), #7; Be sure to glue front edge (with notch) behind Left Front wall.

10. Install Third Floor, #10, inserting tabs into right side wall and partition.

C BALCONY

1. Lay house on back. Install balcony floor #7L, centering tab in balcony door opening (slot towards front). Allow to dry at a right angle to wall.

2. Install Outside Trim #12T around EXTERIOR of doorway.

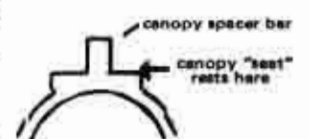
3. Install Trim #12U around INTERIOR of doorway. Balcony doors may now be installed.

4. a) Glue porch railings #7G behind 7H and 2 pcs. 7J behind 2 pcs. 7I. Do not get glue where "X" railings show.

b) Before installing railings on balcony floor, check the fit and sand where necessary. Glue the railings in place.

c) Glue handrail #7F on top of balcony railings.

5. a) Lay house on back. Install canopy "seat" #7K over doorway (at a right angle to house) with notch centered over "canopy spacer bar" of door frame 12T and resting on flat top of door frame. Allow to dry.



6. Gather balcony canopy center 7C, right 7A, left 7B. Before gluing check fit to if sanding is needed; (back edge of canopy center rests on top of spacer bar which extends from door frame). Glue pieces on.

7. Install canopy arches #7 M, N, N, gluing parts onto front edges of canopy "seat"

8. Install trims #7 D, D, E to underside of balcony floor. (recessed about 1/4").

D ROOF

Note: Refer to photo in Section G of instructions.

1. Apply glue along tabbed edge of Right Gable Roof #9 and along inner slanted edge of Left Front wall. Install roof, placing long tabs in partition square cut-outs and aligning slot over front wall tab.
2. Locate Front Roof #10. Apply glue on front-slanting edges of Right wall and partition. Apply glue to tabbed edge of Front Roof and install with tab in Gable Roof slot.
3. Install Rear Roof #11 on rear-slanting edges of right side wall and partition. (The Front and Rear roofs form a "V" groove on top where they meet).
4. a) Install Left Gable roof #6 over tabbed edge of left front wall.
b) Apply glue to both slanted edges of Roof Truss #12R. Install near rear of house in angle made by the gable roof halves. (See photo).
c) Reinforce roof by gluing roof along left side wall, inside the house.

E PORCHES

1. a) Apply glue along straight edge of Side Post #11 and place it behind (the wider) Front Post #10 to form a right angle. (Be sure bottoms are even).
b) Glue post assembly onto the front (right) corners of the porch floors and base.
2. a) Glue side base #12K between bottom of side corner post and Right Side wall, covering exposed part of base strip.
b) Similarly, install front base #12 along front edge of porch floor.
3. a) Strip out Stiles #12A and Railings #12B. Place B behind A to check spots where glue will not show. Be sure that vertical stiles fall in middle of diamond cut-outs, or one part may be upside down). Glue B behind A.
b) Install this railing along edge of 2nd floor porch, with the wider (vertical) stile partially behind corner post.
c) Glue handrail #12G on top of railings (notch fits into corner post).

4. Similarly, glue #30F behind 30G Install along first floor porch front, with one side behind corner post.

5. Glue 2 pcs. #12E behind 2 pcs. #12F. Install each railing along right side of both porches, with wider side behind corner post. Glue on two handrails #12J.



6. a) Apply glue to back side of post #12M and place against the left end (near doorway) of 1st floor railings. Glue 12L onto front edge of 12M, partially covering stile.
b) Install handrail 12I.

7. a) Install 2nd floor arch #5 under front roof: Tab fits into notch in wall; right side falls behind corner post.
b) Similarly, install 1st floor arch #11 under edge of 2nd floor.
c) Install both side arches, #10 over 1st & 2nd floor porch sides.
d) Apply glue along front edge of the overhanging 2nd floor and install trim #12H along 1st floor arch. Similarly, install trim #12N along side arch. (See photo)

F TRIM

1. Install window shutters #4C, 4D, 6H on house.
2. Gather chimney parts from sheet #11: Apply glue along long edge of #11I and of #11J. Place behind each long side of #11M. Apply glue to shorter edges of I and J and install #11N, with top edges even (wood grain to run vertically). Glue Top, #11 on chimney. Glue on Trim #11K, L, L around chimney sides, near the top. Install chimney in gable roof slots.

3. a) Install Gingerbread Trim: #11F under right gable roof, #11G under left gable (recessed about 1/8" from front).

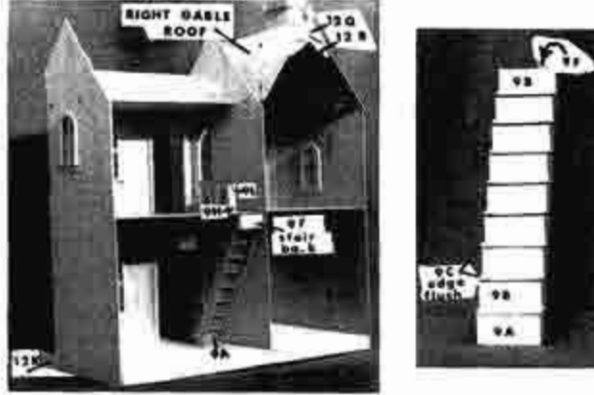
- b) Install Gingerbread Trims #11D & E over right side wall, under overhanging roofs.

4. a) Run a line of glue along the top where the two gable roofs meet. Install the short Roof Trim #8. Similarly, install long Roof Trim #8.

- b) Glue Finials #12 P & Q to front and rear of gable roof, at either end of roof trim. Similarly, install Finial #12 S over right side of house.

G STAIRCASE

1. Gather Staircase parts: bottom riser #9A; 8 risers #9B; 8 Treads #9C; stair sides #9; stair back #9F. Distinguish top from bottom of stair sides; when bottom is held on floor, stairside will reach ceiling.



2. Apply glue along front edges of stair sides where bottom riser will be located. Position Riser A at bottom, over glued edges (not between sides).

Next, apply glue to back edge of stair sides behind location for Top riser. Install stair back #9F here (See photo).

3. Complete staircase from bottom-up, installing at bottom, Tread C, then riser B, then tread C and so on. Bottom edge of riser rests on top of each tread below it. Be sure that, as you face the staircase, treads overhang to your right and are flush with left side. Otherwise, staircase will not fit flush against wall.

4. Install staircase against partition wall, with stair-back even with back edge of 2nd floor.

5. Glue handrail #9G onto bannister #9, centered over top post. Install long handrail #9K on bannister (rounded end towards bottom). Apply glue to front edge of top bannister post and install #9L (under 9G). Install bannister with top post on 2nd floor.

6. Install railing #9E along stairwell opening, edge against partition wall. Apply glue to side edge of 9E and install railing #9D. Glue one post #9H to front edge of railing #9D. Glue handrails #9H & #9M on top of railings.



Thank you for choosing an ARTPLY Dollhouse. We strive to give you the finest quality and value so that you will be proud of your dollhouse for many years to come. We hope that we have succeeded.

Ask your dealer about other quality ARTPLY Dollhouse Kits.



#112 RUTHERFORD



#510 GRANVILLE



#136 WORTHINGTON



#124 FRANKLIN



#99 TENNYSON



#148 HIGHLAND

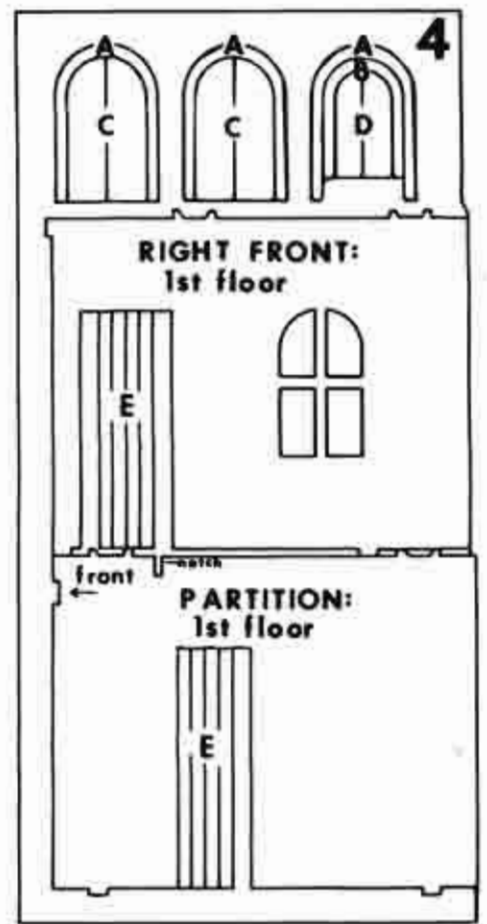
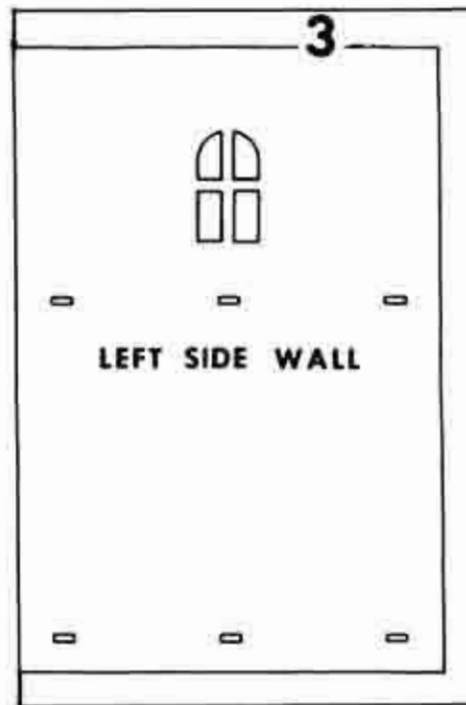
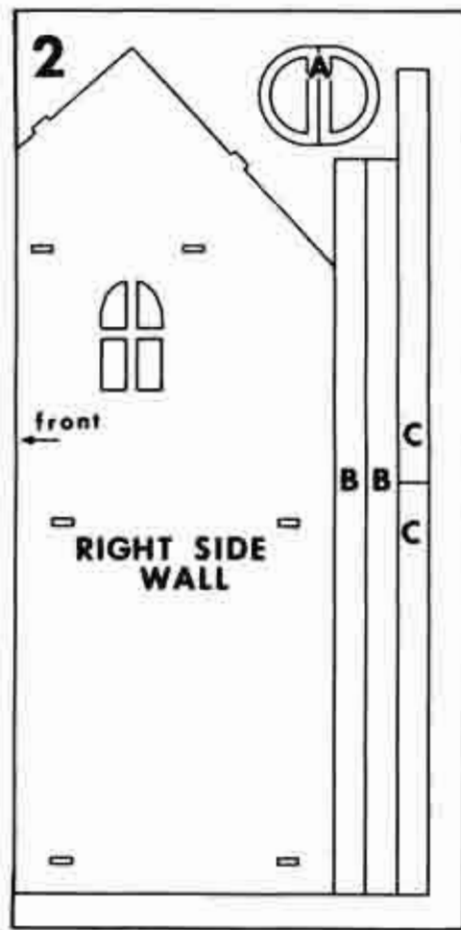
This kit has been carefully inspected before packaging. As with any natural wood product there may occur variations in color, grain properties, etc. If, however, any parts are found to be damaged or missing, we will gladly send to the original purchaser replacement parts upon receipt of written notification within 30 days of purchase. Notification must include your name, address, proof of purchase (customer receipt) and description of part(s) to be replaced.

ARTPLY CO., INC.

518 Wortman Avenue - Brooklyn, N.Y. 11208

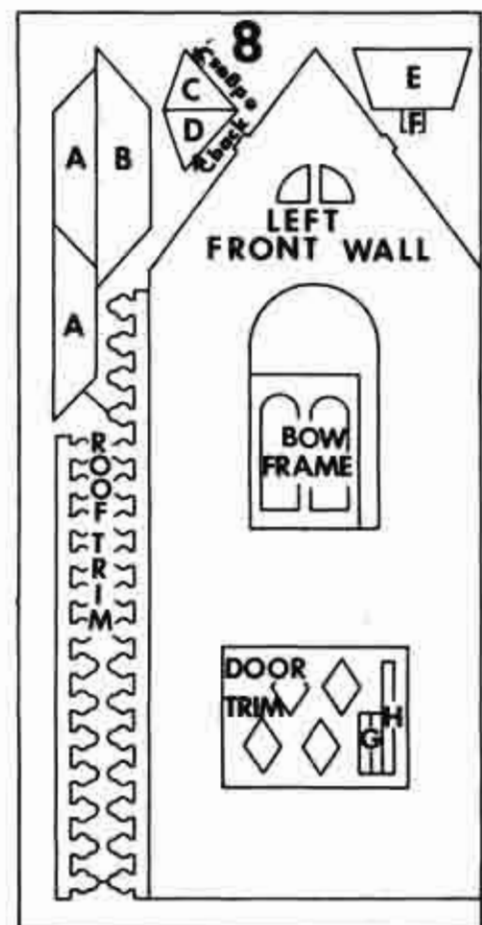
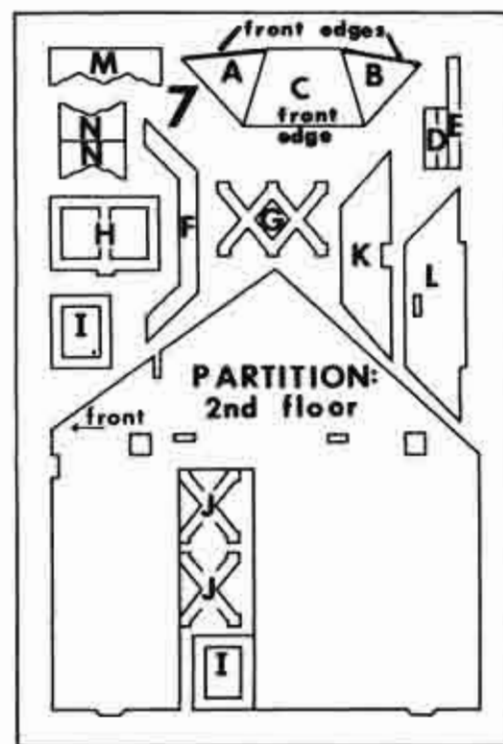
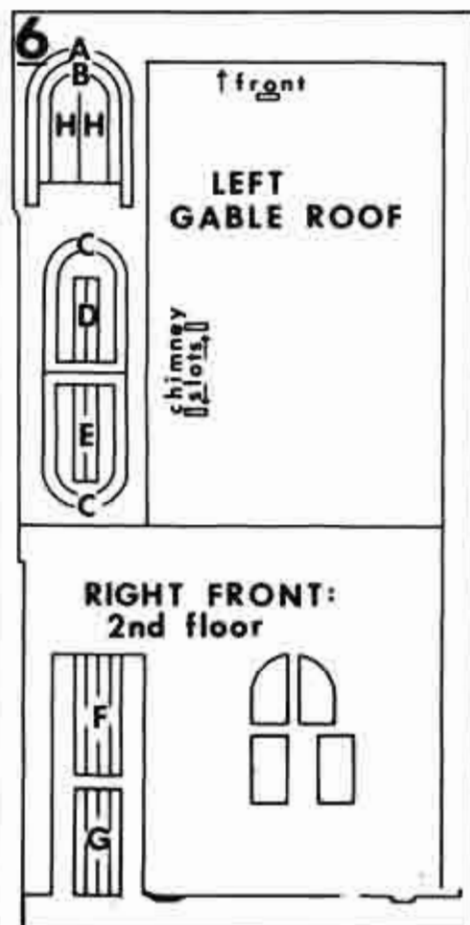
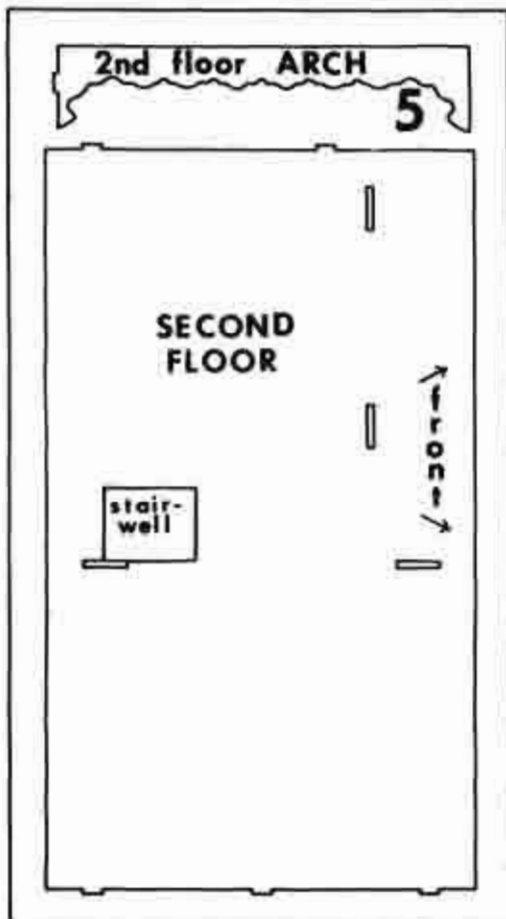
PARTS DIAGRAM

ARTPLY CO., INC.
BROOKLYN, NEW YORK 11208



A - Half-round Window Frames (2 pcs.)
B,B,C,C - Base strips

A - Large Window Frames (3 pcs.)
B - Small Window Frame, Exterior
C,D - Window Shutters (6 pcs.)
E - Door Side Trims (8 pcs.)

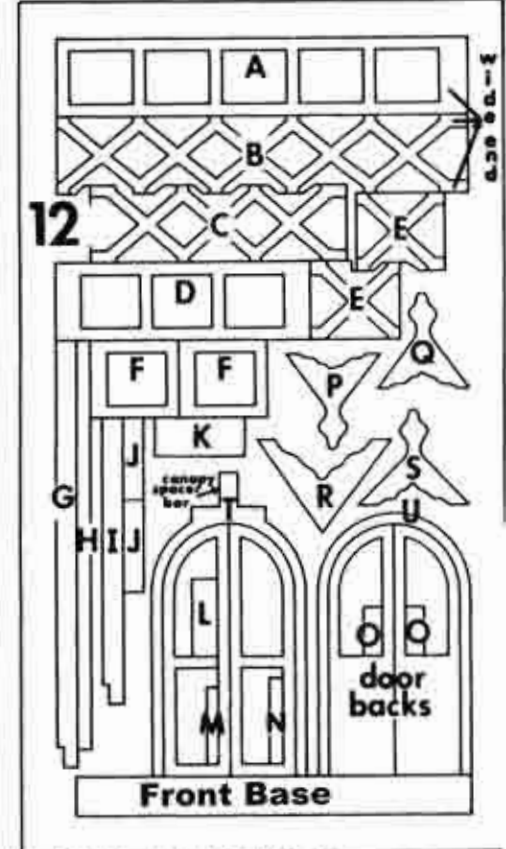
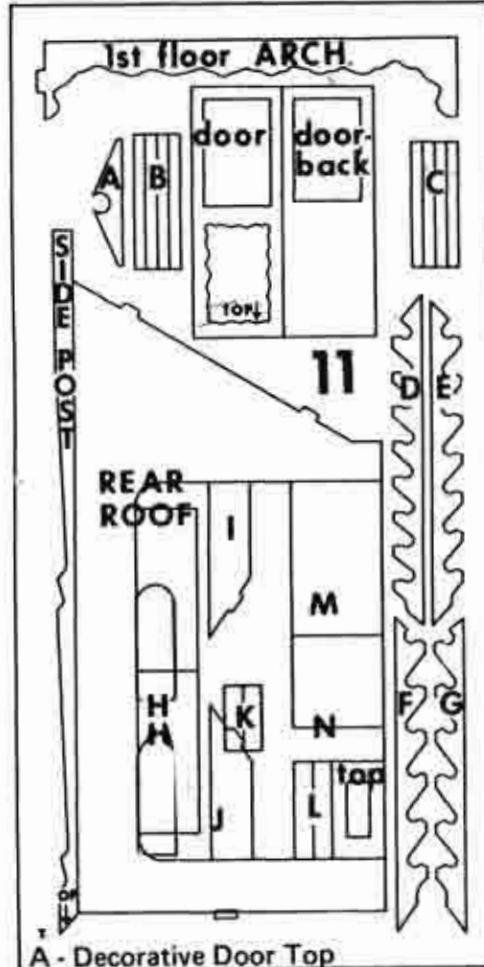
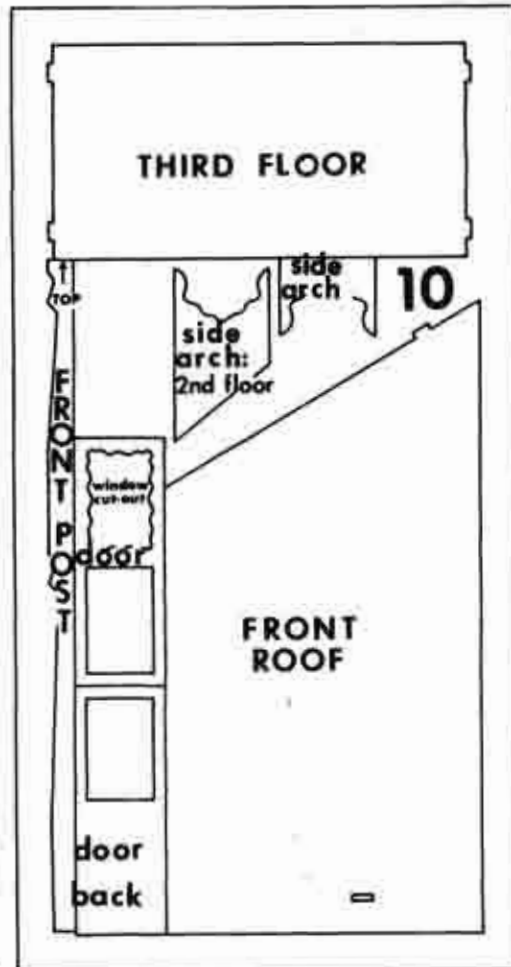
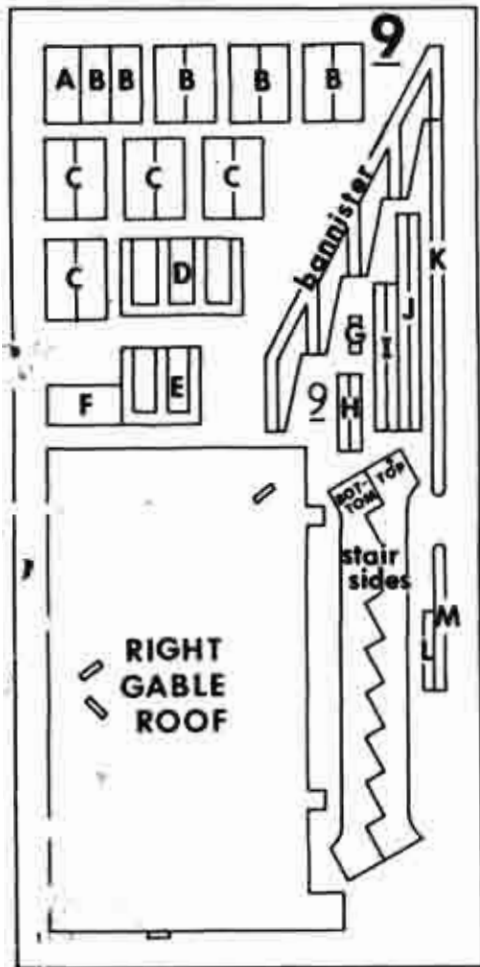


A - Large Window Frame
B - Small Window Frame, Exterior
C - Small Window Frames, Interior (2 pcs.)
D - Small Window Bottoms, Exterior (2 pcs.)
E - Small Window Ledges, Exterior (2 pcs.)
F - Large Window Ledges, Int. & Ext. (4 pcs.)
G - Large Window Bottoms, Int. & Ext. (4 pcs.)

A - Balcony Canopy, Right
B - Balcony Canopy, Left
C - Balcony Canopy Center
D,D, E - Trim under Balcony
F - Balcony Handrail
G,H,I,J - Balcony Porch Railings (6 pcs.)
K - Balcony Canopy "Seat"
L - Balcony Floor
M,N,N - Balcony Canopy Arches

A - Bow Window "Seats" (2 pcs.)
B - Bow Window Ledge
C - Bow Canopy, Right
D - Bow Canopy, Left
E - Bow Canopy Center
F - Bow Canopy Spacer
G,G,H - Trim under Bow Window

PARTS DIAGRAM (CONTINUED)



- A - Bottom Riser
- B - Staircase Risers (8 pcs.)
- C - Staircase Treads (8 pcs.)
- D,E - Stairwell Railings
- F - Staircase Back
- G,H,H - Handrail and posts
- I,J - Bow Window Trim, Int. (4 pcs.)
- K,L,M - Handrail, posts

- A - Decorative Door Top
- B - Door Top Ledges, Exterior (4 pcs.)
- C - Door Top Trims, Int. & Ext. (4 pcs.)
- D,E - Gingerbread Trim, right wall
- F,G - Gingerbread Trim, gable
- H - Bow Window Side Frames (2 pcs.)
- I,J,M,N - Chimney Sides
- K,K,L,L - Chimney Trim

- G,I,J,J - Porch Har,drails
- H,N - House Trim
- K - Side Base
- L,M - Porch railing Posts
- O - Balcony Door Decoration
- P,Q - Finials, gable roof
- R - Roof Truss
- S - Firial, right side
- T - Exterior Balcony Door Frame
- U - Interior Balcony Door Frame

TEMPLATE

Parts below are drawn actual size.

