

DOLLHOUSE ASSEMBLY INSTRUCTIONS

THE DOLL HOUSE KIT contains 19 numbered die-cut wood sheets, 1 plastic windows sheet, sandpaper and instructions. Have on hand any all-purpose white glue, masking tape, pencil and any hinges or hardware you may desire.

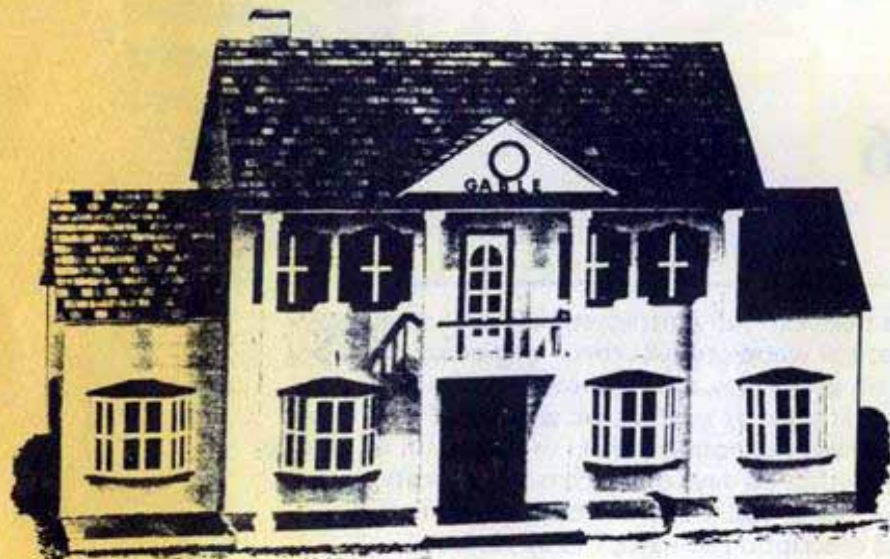
READ CAREFULLY THROUGH ALL INSTRUCTIONS BEFORE ASSEMBLING.

IMPORTANT: Before you begin, carefully remove each sheet from box and, referring to the Parts Layout Diagram, lightly mark in pencil the Sheet number and letter designation on each separate piece.

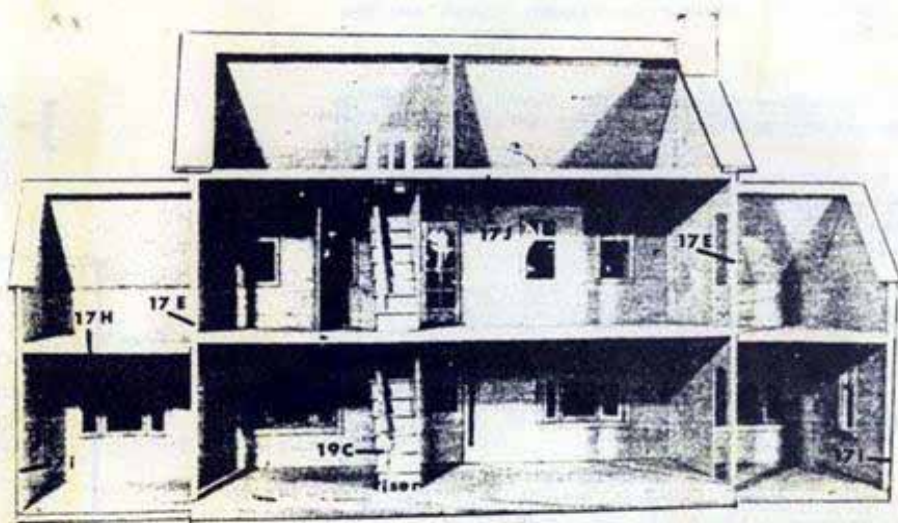
(Example: Sheet #5 has four identical parts lettered "H". Mark "5H" on each piece). This simplifies identification of parts.

ASSEMBLY HINTS:

1. Follow step-by-step instructions in the order presented.
2. Before gluing any part, check for proper positioning and fit. Sand parts lightly where necessary, exercising care when sanding in direction of grain to avoid splintering.
3. Smooth side of wood faces outside surfaces (exterior) of house.
4. Exercise care in removing windows from plastic sheet so they do not tear. You may want to use a scissors.
5. **ORIENTATION:** As you face house from front, left side is to your left. (From the rear, left side is to your right).



Left Side



Right Side

Right Side

Left Side

NOTE: Should any parts fall out of the wood sheets before marking for identification, REFER TO TEMPLATE DIAGRAM. Match the part to the same size template drawing and mark for identification.

PAINTING: As you come to each section, determine if you want to paint those parts before assembly. If so, lay parts on newspaper and write identification next to each part. Allow parts to dry away from heat.

A WINDOWS & DOOR TRIM

NOTE: You may want to paint window trim and walls before assembly. Paint both sides and edges of window panes.

1. a) Remove and strip out parts from: Front wall, Sheet #6 (be sure to mark 24 pcs. "6A"). Right wing side #11, Left wing side #12.

b) Carefully, so they do not tear, remove the 6 medium sized windows from plastic sheet (for the 4 upper floor and 2 wing side windows). Glue plastic onto INTERIOR (back) side of walls using a very thin line of glue around outline of window openings. (No glue on pane strips).

2. For these six windows gather INTERIOR Trim parts: 12 side trims #6A, 12 Top & Bottom Trims #10A. Install on back side of wood completing one window at a time. First, glue on 2 Side Trims, butting them along window edge. Then Top & Bottom trims.



3. For these same windows gather EXTERIOR Trim parts: 12 side trims #6A, 3 Tops #11C, 3 Tops #12C, 6 Sills #9A, 6 Bottoms #9B. Complete one window at a time. First, install two side trims 6A. Next glue on Top Trim. Apply glue along one edge of saddle 9A and center under bottom of window. Center bottom 9B under saddle.

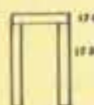


4. a) Install appropriate plastic windows in Transoms & both sidelights around entrance doorway. Strip out 2 parts #18M and #18K and use to frame these 3 windows on INTERIOR side.

b) Strip out Door Frame, sheet #18. Glue this around exterior side of doorway.

5. Locate door back, #6 and door, #18. Install plastic on back side of door. Apply glue to back side of door #18 and press against door back. When dry, sand to fit opening. Door may later be glued or hinged in place.

6. Gather Interior & Exterior balcony door trims: 4 sides #17D; 2 Tops #17G. Install around balcony doorway, bottom edges even with door opening.



7. Similarly to preceding Step 6, assemble balcony door using door #6 and door back #17.

8. For Bow Windows strip out all parts on Sheet #15, 4 "seats" #16A, 4 "seats" #5A. Important: The Top of window frames are wider than bottom - be sure to match Tops of center and sides when assembling.

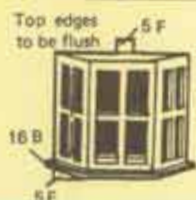
a) Apply glue along the short straight edge of #16A and press against top of center frame. (Top of frame to be flush with surface of 16A).

b) Apply glue along the 2 slanted edges of 16A and install 2 frames #15 on either side of center frame. (Be sure tops match).

c) Similarly, glue in another "seat" 16A at bottom of frames. (See photo below).

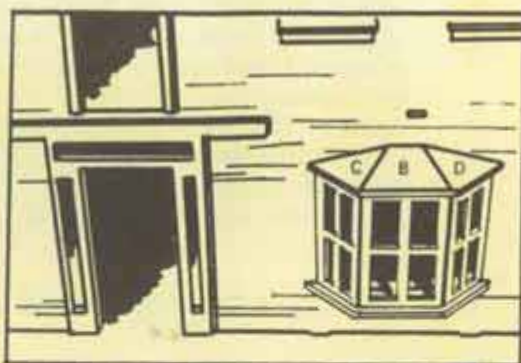
d) Follow same procedure to construct 3 more Bow window units using 16A or 5A.

9. Remove the 12 plastic windows. Install in Bow window units, gluing in the larger center window first.



10. Locate Front wall #6 and 2 wing fronts #9 & 10.

a) Install the 4 bow window units over large window openings, with the top and bottom "seats" flush with window opening. Remember, wider frame is top. (Also, tabbed edge of wing front is bottom).



b) Apply glue along bottom edges underneath of frames on each window unit and install 4 ledges #16B.

c) Glue 4 Ledge strips, #5E under bow window ledges.

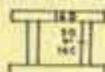
11. Gather 4 spacers #5F, 4 canopy centers #5C, 4 canopy rights #5D. Complete 4 bow canopies one at a time as follows:

a) Glue spacer 5F onto wall, centered over window with bottom edge, resting on seat. (Spacers will help make all 4 window canopies uniform in height).

b) Install canopy center #5B with back edge resting on top of spacer, and front edge centered over the middle bow window frames. (See photo above).

c) Before gluing, check fit of canopy Left 5C and Right 5D. Sand if necessary. (The longest edge of 5C and 5D are the back edges which butt against house wall). Glue these parts in place.

12. Install INTERIOR TRIM around bow window openings using 4 pcs. #5G, 4 pcs. #16C, 8 pcs. #16D. Glue in side trims first.



B WALLS & FLOORS

1. Strip out 1st Floor, #1. Gather base strips #8 A, A, B, B. Place floor on table, face down. Apply glue along one long edge of 8A and install to front underside of floor. Next, install both side base strips B, then rear strip A. Tape corners until dry.

2. Locate floor supports #17C, F. Apply glue to long edge of 17F without the notch. Install under middle of floor, between front and rear base strips. Apply glue to 17C, along edge with notch. Install across 17F, inserting one notch in the other. Turn floor over, face up.

3. Apply glue along bottom edge of Front Wall, #6. Insert into floor slots, with side edges even with edge of floor. Support with object.



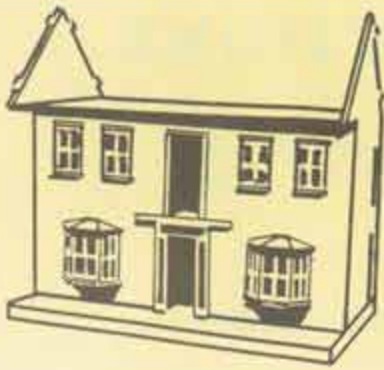
4. a) Apply glue along front edge and bottom edge of Left side #4. Install flush along edge of floor - with front edge forming a perfect corner with front wall. (As you face house from rear, Left side is to your right). Tape corner until dry. **NOTE:** Rear edge of side walls will not be even with rear edge of floor. There will be about 1/8th" space for strips in Section F, step 1.

5. Similarly, install Right Side #5.

6. Apply glue along front (tabbed) and side edges of 2nd Floor #2. Install in house, aligning all tabs in wall slots (double tab on each side fits in side wall doorways).



7. Apply glue along Top (tabbed) edge of front wall, and along both side edges of 2nd floor, #2. Install 3rd floor.



8. Apply glue along top and bottom edges of 1st floor partition #7 (with large "grooved" tabs on Top). Install with tabs in 1st & 2nd floor slots.
9. Similarly, install 2nd floor partition #7, inserting bottom "V" Tabs into grooved tabs of partition below.
10. Install partition #17 with bottom tabs in remaining 2nd floor slots.

C BALCONY & COLUMNS

1. a) Gather Balcony floor, #18, 3 railings #18I, J and support trims #18A, D, E. Apply glue along straight edge of 18D and install underneath left side of balcony floor. (Decorative "bracket" end of 18D & E are towards front of balcony).

Install 18E under right side of balcony. Apply glue to one long edge of 18A and install under front edge of balcony, between "decorative bracket" ends.



- b) Glue balcony railings around balcony floor in order: I, J, I. Be sure back edges of railings are even with back edge of floor.



2. Carefully lay house on its back. Apply glue along back edges of balcony floor and railings I. Install balcony so that floor rests on top of the bar which is part of the entrance door frame. [Bar fits between side supports, 18D & E]. When dry, set house upright.

3. Gather column posts: #5H (4 pcs.), #5I (3 pcs.), #17A (4 pcs.), #17B (5 pcs.); and column caps #4A (16 pcs.), #4B (16 pcs.).

a) Construct 4 columns, completing one at a time: (before gluing, carefully sand for tight fit) apply glue along both long edges of 2 narrow posts #5I or #17B and sandwich between 2 wide posts 5H or 17A. When dry, sand corners flush.



- b) Install caps around top and bottom of each column with the edges of caps even with ends of columns: Glue #4A to side with the narrow columns (5I or 17B). Then glue on 4B, then 4A, then 4B. Sand edges if needed for flush fit.

4. a) Gather balcony handrails #18F, F, G. Center each 18F on top of balcony side railings. Do Not glue on 18G. Use this as a guide in next step to space equal distance between columns.

b) When installing columns, side with the wider post (5H or 17A) faces front. Now, glue in 2 columns on either side of balcony - outermost edge of columns to be even with sides of balcony. (Distance is length of handrail 18G: measure by holding 18G between sides of columns, not where column caps are).

- c) Install remaining 2 columns using 18G as a guide. Be sure columns stand straight.
- d) Center (glue) handrail 18G on top of balcony front railing.

D ROOF

1. Strip out Front Roof #14, Back Roof #18 and 3 Gable parts #18, 3rd floor partition #7.

a) Apply glue along front tabbed edges of Right and Left side walls of house and along overhanging edge of 3rd floor. Install front roof #14.

b) Glue in partition with bottom tabs in floor slots, front tab in slot in center of roof.

c) Apply glue along back (tabbed) edges of house side walls and on tabbed edge of partition. Install back roof #18.

d) Apply glue along tabbed edges of gable front #18. Insert into Left and Right Gable "roofs", so they overhang evenly. Run a line of glue where gable roofs form a peak. Tape until dry. (See photo of house).

e) Apply glue along rear (tabbed) edges of gable and along bottom edge of gable front. Install in gable slots in front roof.

- f) Strip out #18H & L. Center "donut" H on L. Glue this onto center of gable front.

E WING EXTENSIONS

1. (Be sure parts 11A & B, 12 A & B are marked for identification). Gather from sheet #10: Right wing 2nd floor, back roof, roof, wing front (with bow window). From sheet #11: Right wing side and wing base; From sheet #13: 2 pcs. A, 2 pcs. B.

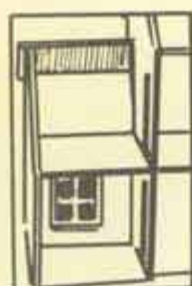
2. Glue base strips under wing base in order: #13A, B, B, A. Apply glue along the inside base strip which will butt against (right) side of house. (remember, if you face house from rear, right side is to your left). Install wing base against house with rear edge of wing floor even with rear edge of house floor.

3. Apply glue along tabbed edge of wing front and along the side edge which will butt side of house. Insert into base slots. Be sure that wall is straight and flush against house. Hold right wing side #11 at a right angle to front wall to insure squareness. Support with object.

4. Apply glue along bottom and front edges of Right wing side #11. (Front edge is the one without small notch near roof line; See parts diagram). Install along outer edge of wing base. (Rear edge of side will not be even with rear edge of floor). Tape front corner until dry.

5. Apply glue along both tabbed edges and front edge of Right Wing 2nd floor #10. Install with large tab fitting in doorway of house wall.

6. Apply glue to top edge of wing front, to front tabbed edge of wing side and along tabbed edge of wing roof #10. Install front roof with tab in house wall slot.



7. Glue on Right back roof #10, inserting notched edge into house wall slot.

8. Follow preceding steps 1-7 to install Left wing extension using parts: from sheet #9: Left wing 2nd floor, wing front, left roof, back roof. From sheet #12: Left wing side, wing base. From sheet #13: 2 pcs. A, 2 pcs. B.

F TRIM

1. a) Install "vertical" strips #17 I along rear edge of each wing side wall. Strip should be flush with side wall, resting inside small notch in wing 2nd floor. (See photo).
- b) Similarly, install "vertical" strips #17E along rear edges of left and right side walls of house.
2. a) Install floor strips #17H underneath rear edge of each wing 2nd floor.
- b) Install floor strips #17J under rear edge of 2nd & 3rd floors in house.
3. Gather window shutters: #7 (8 pcs.), #4C (4 pcs.). Install on 6 small windows as illustrated.
4. Gather chimney parts from sheet #19. Apply glue to both long edges of 19G and install between Left & Right Chimney sides. Top edges even. Similarly glue in 19 I. Center 19F on Top of chimney. Center 19H on Top. Install chimney, inserting Tabs into back roof slots.

5. Gather porch step parts #9C, D, E, E. Glue D under front edge of Step C. Install E under each side of step. Install porch step on base, in front of entrance. (See photo).

G STAIRCASES

1. Gather staircase parts: 8 treads #11A, 9 risers #11B, 2 stair sides #19. Distinguish top from bottom of stair sides; When bottom is held on floor, stairside will reach ceiling.
2. Apply glue along front edges of stair sides where bottom and top risers will be located. Position Risers B over glued edges (not between sides) to establish width of staircase. (Note: Do not confuse risers with the treads which are longer). Install remaining 7 risers.

3. Apply glue to top edges along stair sides and position 8 treads, A. Be sure that, as you face staircase, treads overhang to your left, and are flush with right side. Otherwise, staircase will not fit flush against wall.

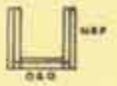
4. Install staircase against 1st floor partition, with top riser even with stairwell opening.

5. Gather bannister #18C, #19A, B, C. Glue 19C onto bottom leg of bannister 18C, centered and with bottom edges even. Similarly, center 19B on top leg of bannister. Center handrail 19A on bannister. Install bannister on staircase, with bottom leg on 1st tread.

6. Follow preceding steps 1-5 to install 2nd floor staircase using: 8 treads #12A, 9 risers #12B, 2 stair sides #19.

7. Center post #19E on straight leg of bannister #18B. Install bannister 18B behind staircase on 2nd floor - curved front fits into contour of staircase side. Center handrail #19D on bannister.

8. Gather #18 N, N, O, P, P, O. Apply glue along both side edges of bannister O and place between each bannister N. Install bannisters around 3rd floor stairwell. Center handrail Q on bannister O, and each handrail P on each bannister N.



I-136

This kit has been carefully inspected before packaging. As with any natural wood product there may occur variations in color, grain properties, etc. If, however, any parts are found to be damaged or missing, we will gladly send to the original purchaser replacement parts upon receipt of written notification within 30 days of purchase. Notification must include your name, address, proof of purchase (customer receipt) and description of part(s) to be replaced.

518 Wortman Avenue
Brooklyn, N.Y. 11208

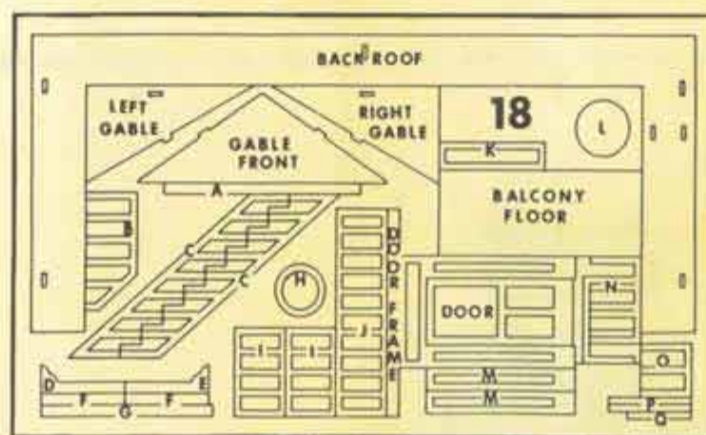
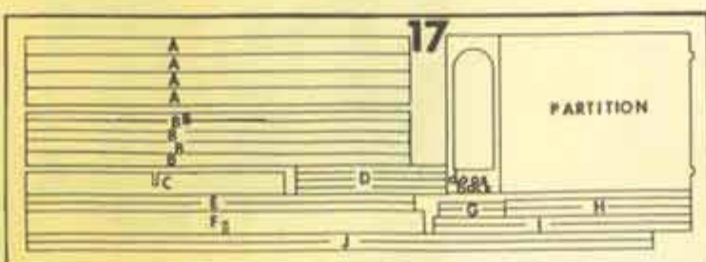
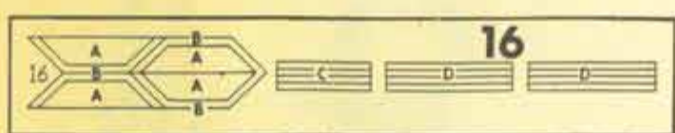
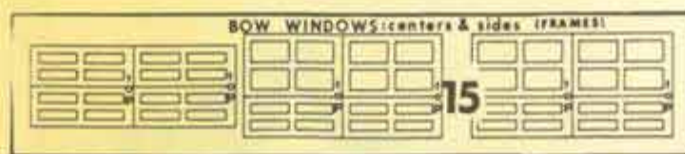
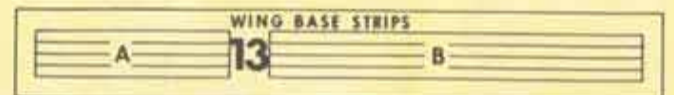
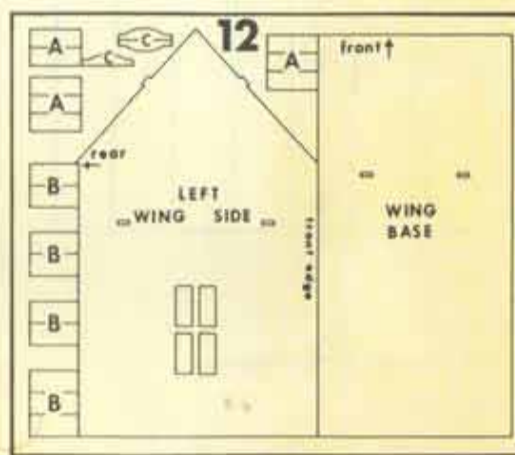
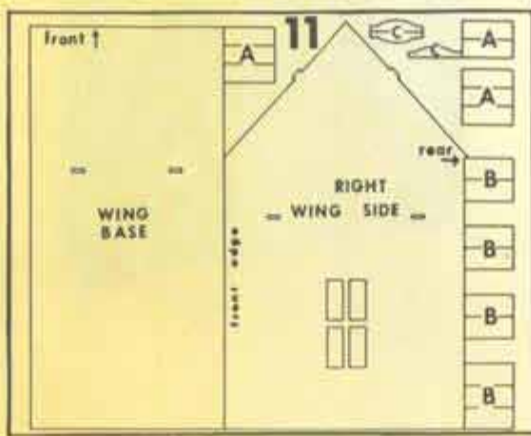
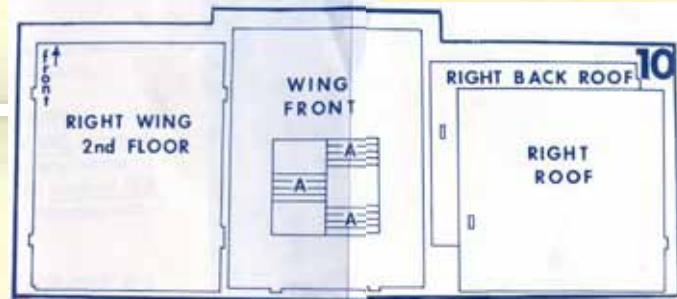
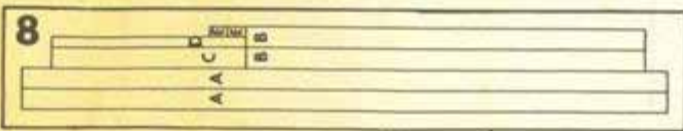
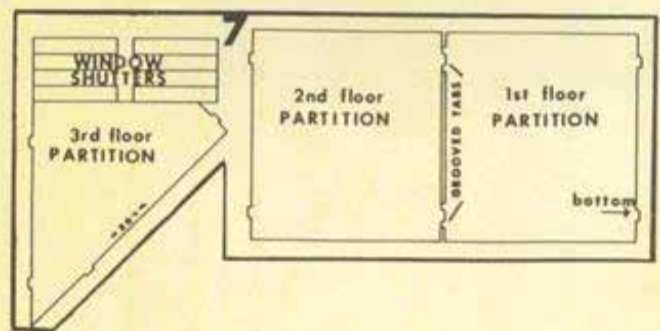
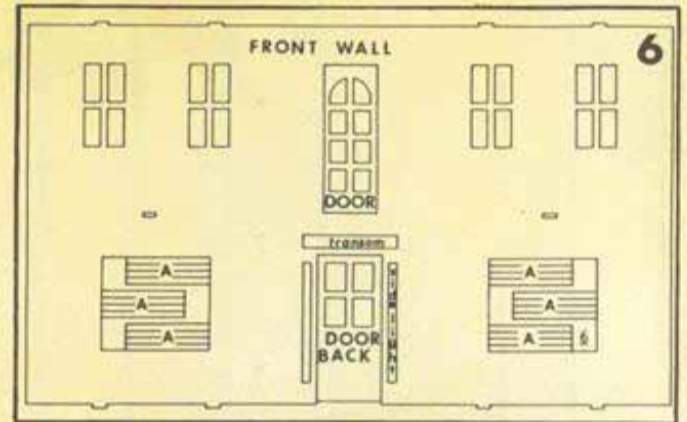
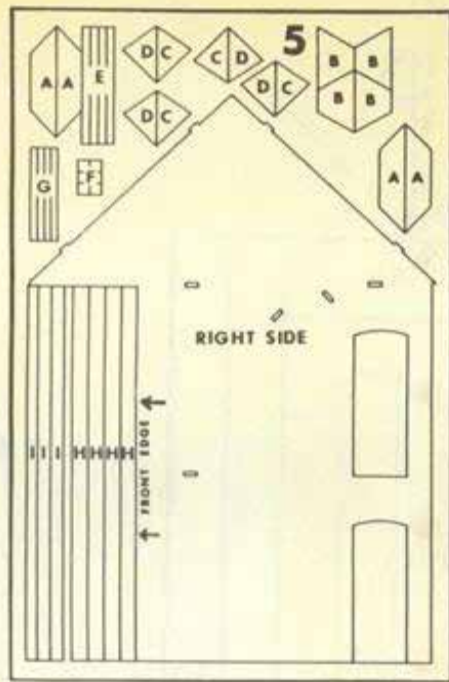
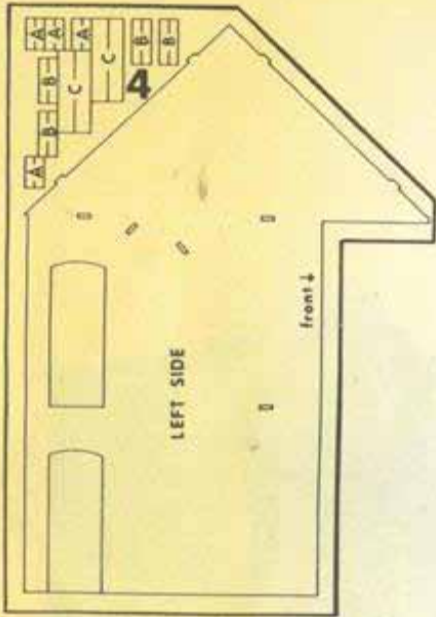
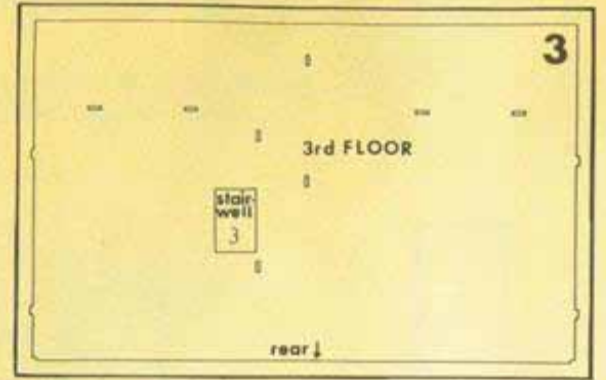
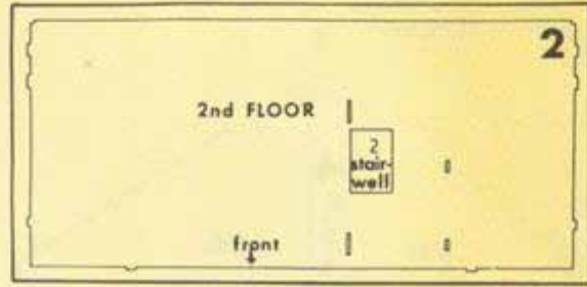
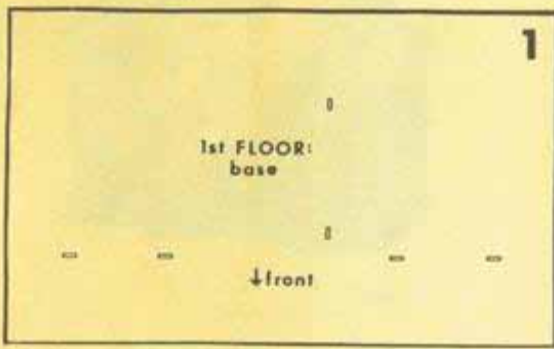
Parts List

SHEET NUMBER & LETTER DESIGNATION

- | | | |
|---------|---|--|
| #4 | A - COLUMN CAPS (16 pcs.) | |
| | B - COLUMN CAPS (16 pcs.) | |
| | C - WINDOW SHUTTERS (4 pcs.) | |
| #5 | A - BOW WINDOW SEATS (4 pcs.) | #17 |
| | B - BOW WINDOW CANOPY, CENTER (4 pcs.) | A - COLUMN POSTS (4 pcs.) |
| | C - BOW WINDOW CANOPY LEFT (4 pcs.) | B - COLUMN POSTS (narrow) (5 pcs.) |
| | D - BOW WINDOW CANOPY RIGHT (4 pcs.) | C - UNDER FLOOR BRACE |
| | E - BOW WINDOW LEDGE STRIPS (4 pcs.) | D - INT. & EXT. BALCONY DOOR SIDE TRIMS (4 pcs.) |
| | F - CANOPY SPACERS (6 pcs., 2 are extra) | E - HOUSE "VERTICAL" STRIPS (2 pcs.) |
| | G - INTERIOR BOW WINDOW SIDE TRIMS (4 pcs.) | F - UNDER FLOOR BRACE |
| | H - COLUMN POSTS (4 pcs.) | G - INT. & EXT. BALCONY DOOR TOP TRIM (2 pcs.) |
| | I - COLUMN POSTS (narrow) (3 pcs.) | H - WING FLOOR STRIPS (2 pcs.) |
| #6 | A - INTERIOR & EXT. WINDOW SIDE TRIMS (24 pcs.) | I - WING "VERTICAL" STRIPS (2 pcs.) |
| #8 | A, B HOUSE BASE STRIPS (4 pcs.) | J - HOUSE FLOOR STRIPS (2 pcs.) |
| | C, D, E ENTRANCE STEP (4 pcs.) | |
| #9 | A - EXTERIOR WINDOW SADDLES (6 pcs.) | #18 |
| | B - EXTERIOR WINDOW BOTTOMS (6 pcs.) | A - BALCONY SUPPORT TRIM |
| #10 | A - INTERIOR WINDOW TOPS & BOTTOMS (12 pcs.) | B - 2nd FLOOR BANNISTER |
| #11, 12 | A - STAIR TREADS (8 pcs.) | C - STAIR BANNISTERS (2 pcs.) |
| | B - STAIR RISERS (9 pcs.) | D, E BALCONY SUPPORTS, LEFT & RIGHT |
| | C - EXTERIOR WINDOW TOPS (3 pcs.) | F, G BALCONY HANDRAILS (3 pcs.) |
| #13 | A, B WING BASE STRIPS (8 pcs.) | H, L GABLE DECORATION |
| #16 | A - BOW WINDOW SEATS (4 pcs.) | I, J BALCONY PORCH RAILINGS |
| | B - BOW WINDOW LEDGES (4 pcs.) | K, M INTERIOR ENTRANCE DOOR TRIMS (3 pcs.) |
| | C - BOW WINDOW INTERIOR SIDES (4 pcs.) | N, N, O 3rd FLOOR BANNISTERS |
| | D - BOW INTERIOR TOPS & BOTTOMS (8 pcs.) | P, P, Q HANDRAILS, 3rd FLOOR BANNISTERS |
| | | #19 |
| | | A - BANNISTER HANDRAILS (2 pcs.) |
| | | B - POST, TOP OF BANNISTERS (2 pcs.) |
| | | C - POST, BOTTOM OF BANNISTERS (2 pcs.) |
| | | D - HANDRAIL FOR BANNISTER 18B |
| | | E - POST FOR END OF BANNISTER 18B |
| | | F, G, H, I - CHIMNEY PARTS |

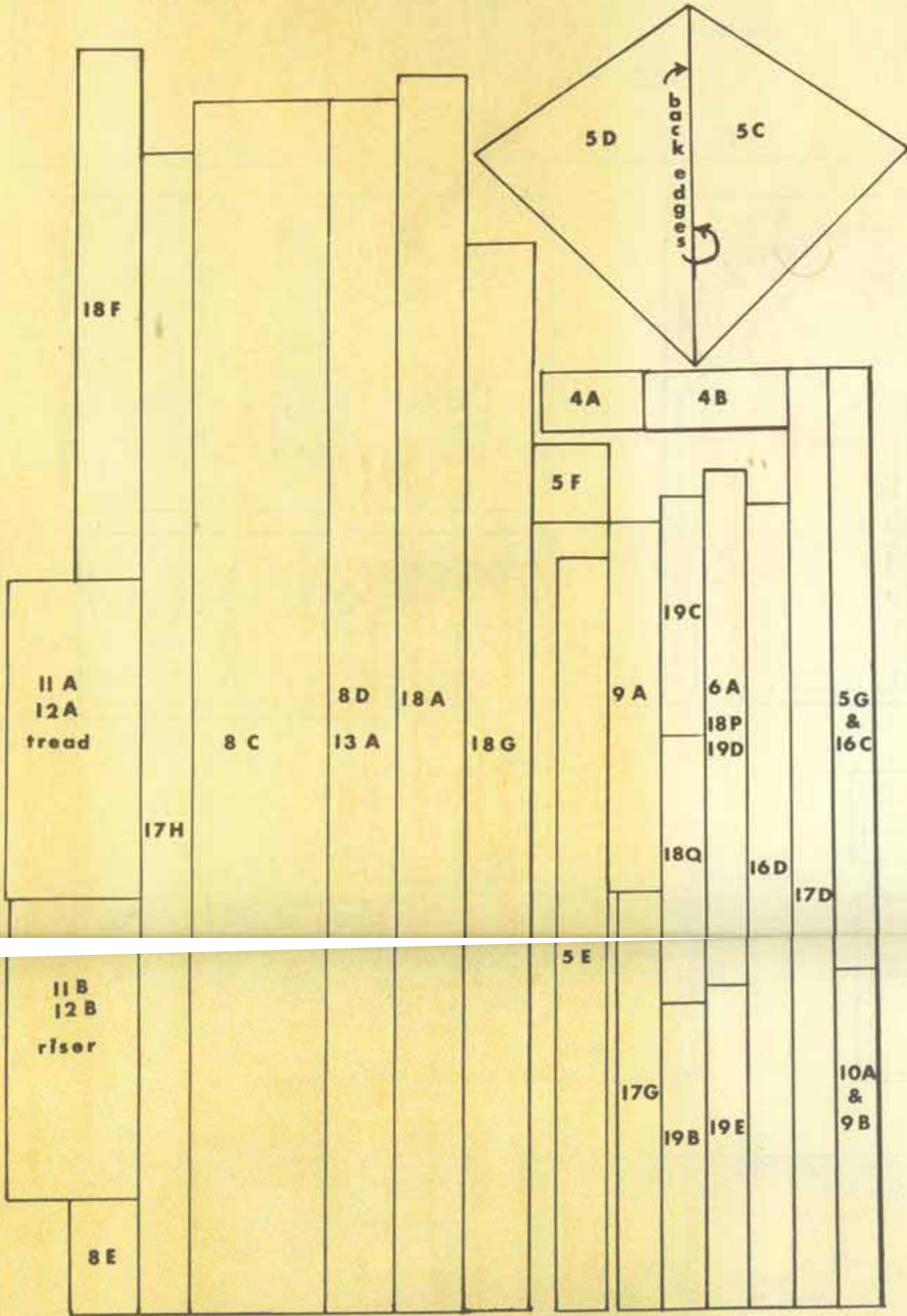


PARTS DIAGRAM



Template

PARTS BELOW ARE DRAWN ACTUAL SIZE.
 Glue • Paint • Shingles • Siding • Hardware • Not Included



#510



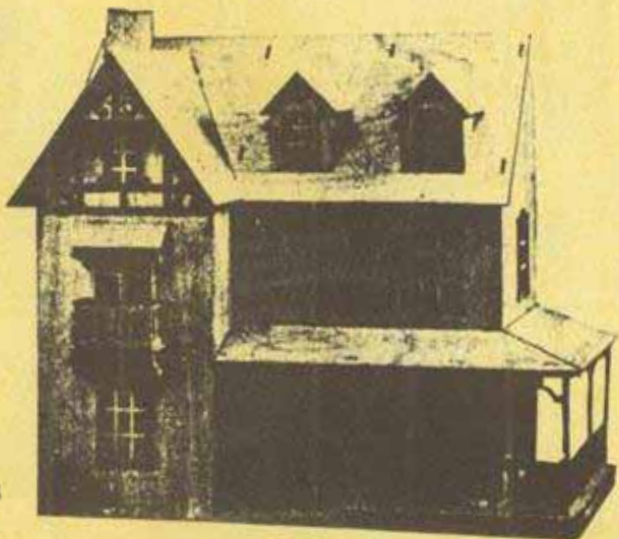
#85



#112

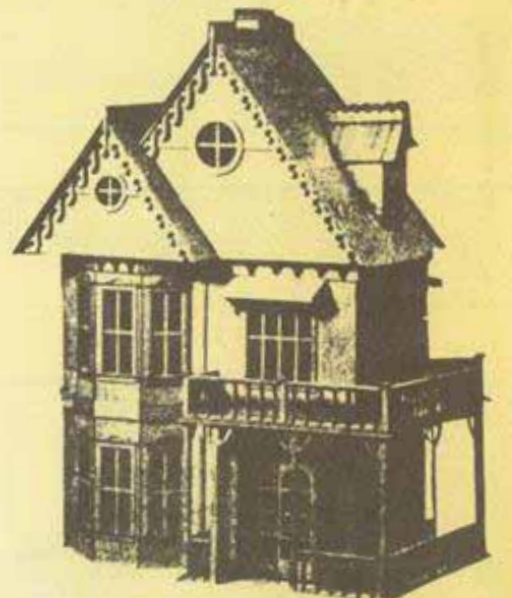
Thank you for choosing our Dollhouse. We strive to give you the finest quality and value so that you will be proud of your dollhouse for many years to come. We hope that we have succeeded.

Ask your dealer about other quality Dollhouse Kits,



#124

I-136



#99