

DOLLHOUSE BUILDING INSTRUCTIONS

DOLLHOUSE KIT contains 15 numbered die-cut wood sheets, 1 plastic window sheet, sandpaper and instructions. Have on hand any all-purpose white glue, masking tape, pencil and any hinges and hardware you may desire.

READ CAREFULLY THROUGH ALL INSTRUCTIONS BEFORE ASSEMBLING.

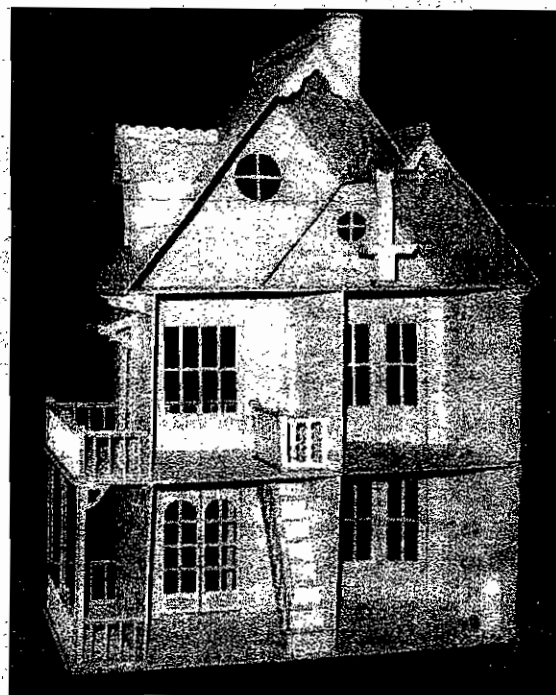
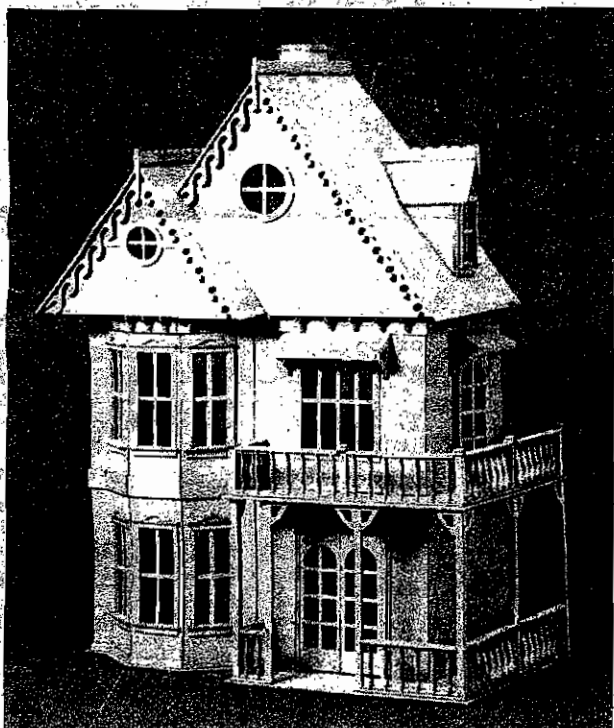
IMPORTANT NOTE: Before you begin, carefully remove each sheet from box and, referring to the Parts Layout Diagram, **MARK IN PENCIL THE SHEET NUMBER AND LETTER DESIGNATION ON EACH PIECE.** This will simplify identification of parts.

ASSEMBLY HINTS

1. Follow step-by-step instructions in the order presented.
2. Before gluing any part, check for proper positioning and fit. Sand parts lightly where necessary, exercising care when sanding in direction of grain to avoid splintering
3. Smooth side of wood should face outside surfaces of house.
4. Exercise care in removing windows from plastic sheet so they do not tear.

PAINTING: As you come to each section in the instructions, determine if you want to paint those parts before assembling. If so, lay parts on newspaper and write identification next to each part. Use masking tape over tabs and slots. Allow parts to dry away from heat.

NOTE: Should any parts fall out of the wood sheets before marking for identification, REFER TO TEMPLATE DIAGRAM. Place the part on the same size template drawing and mark for identification.



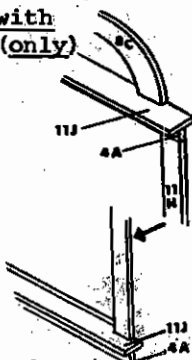
A WINDOWS & WINDOW TRIM

NOTE: You may want to paint window trim and walls before installation. Paint both sides and edges of all window pane strips.

1. Remove and strip out window cut-outs from right front, 2nd floor (sheet #4), 3 bay windows (sheet #7), large & small peak fronts (sheet #9), dormer front #9L.
2. Being careful so they do not tear, remove windows from plastic sheet. Glue windows on interior (rough) side of walls, applying a very thin line of glue around edges of window. (Not to pane strips).
3. Gather and strip out entrance doors (#4), side door (#5) and 3 door backs (#12); (Mark and set aside parts within door backs). Decorative cut-outs on backs may be removed and glued on to door fronts. Following step 2, glue windows on to (rough side) door backs. Next, glue door backs to doors and set aside.
4. (a) Install interior bay window trim on rough side of 3 bay walls (#7), completing one window at a time. First, glue on two side trims (#11H) butting them along window edge and even with top of windows. Then, install top and bottom trims (#4A).



- (b) In the same manner, install interior large window trim on right front (#4) using 2 #11H and 2 #11I trim. (on rough side).
- (c) Install interior dormer window trim on dormer (#9L) using 2 #9I and 2 #9H trim. (on rough side).
5. (a) Install exterior bay window trim completing one window at a time. First, glue on 2 side trims (#11H) even with top of window; Next, top trim #4A (only) Apply glue along one edge of top&bottom saddle trims #11J and center them across window. Then install bottom trim #4A.
(b) Similarly, install exterior large window trim using, in order, 2 pcs. #11H, top #11I, 2 pcs. #11O, #11I. Note: Bottom of-wall is edge with smaller tabs.
(c) Similarly, install exterior dormer window trim using #9I, #9H & 9G.
(d) Center decorative trim #8C on top ledge over bay & dormer windows. (extra pcs. may be used on doors).
6. Install large and small round window trim (#9M, #9F) to interior and exterior of both peak fronts. (#9).



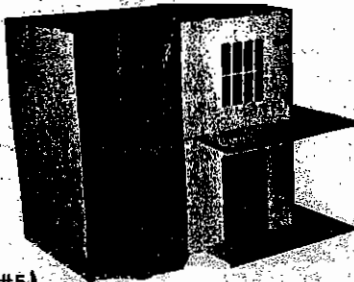
B FLOORS AND WALLS

NOTE: Grooved tabs are TOP edges of 1st. Floor walls.



1. Remove 1st floor (#1) and strip out slots. Place with front facing you.
2. Remove right side, 1st floor (#5). Apply glue along bottom edge. Insert into slots in right side of floor. Support with any object. Apply glue along front edge for next step.
3. Apply glue along bottom edge of right front, 1st floor (#4). Place into floor slots and tape corner.
4. Remove 1st floor partition (#3) and set aside door. Apply glue along bottom edge and front edge (with small tab). Position in floor slots with small tab in front of wall notch.
5. Strip out 2nd floor (#6). Apply glue along all top edges of walls (not in grooved tabs). Position 2nd floor on top. Place a weight on top until dry.
6. Sand down tops of grooved tabs that may protrude higher than 2nd floor surface.

7. Strip out left side (#2). Apply glue along bottom edge and along left side edge of 2nd floor. Position in ground fl. & over 2nd fl. side tabs. NOTE: For steps 7, 8, 9, 10 -- 2nd floor walls--slightly sand down bottom tabs just prior to gluing.



8. As in step 2; install right side, (#5)

9. Install right front (#4). Tape corner.

10. Refer to step 4; install partition (#3).

11. Apply glue along tabbed edges of 2nd floor & left wall edge. From right to left, install bay window walls (#7) with (glued) tabs in ground floor slots. Install left front wall strip (#15D) with tabs to the right of center.

12. Strip out 3rd floor (#8). Apply glue to top edges of walls and position floor on top. Check alignment of bay window walls and run lines of glue between them. Tape until dry.

C ROOF SUB-ASSEMBLY AND DORMER

1. (a) Gather planter box sides #10A, B, C, D. Apply glue to slanted edges on A&B. Butt against C&D to form a box that slants outward.

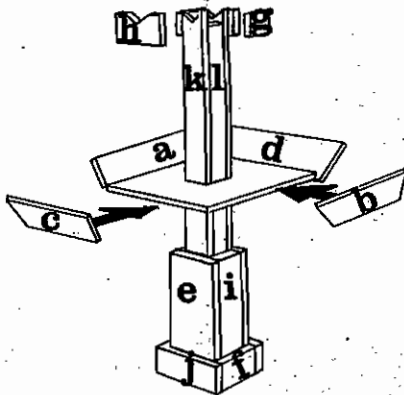
(b) Apply glue along all edges of #10M (box bottom) and drop into box assembly.

(c) Apply glue to both long edges of 2 pcs. #10L and butt against 2 pcs. #10K to form column. Be sure bottom edges of all are even.

(d) Glue parts #10I on to #10L sides of column and #10E to #10K sides.

(e) Slide planter box on to column and glue in place.

(f) Glue on top mouldings #10G & H and bottom mouldings #10F & J on to column as illustrated.



2. Gather large & small peak fronts (#9); right roof (#12); left roof (#10); small inner roof (#9); inner roof (#11); roof trusses (#9N, #90). Strip slots.

3. (a) Apply glue along left (tabbed) edge of small peak front and insert into left roof so that open notches in left roof are towards bottom. Tape in position.

(b) Apply glue along other tabbed edge of peak and position sm. inner roof with open notches toward bottom.

(c) Glue in sm. roof truss towards rear of roof assembly. (see photo).

4. (a) Apply glue along shortest tabbed edge of lg. peak front and insert into inner roof (#11) slot (rough side of wood faces interior; tabs towards bottom).

(b) Glue on right roof to long side of peak.

(c) Install lg. roof truss towards rear of assembly.

5. Apply glue along left side and left front edges of 3rd floor. Place small peak roof assembly squarely on top. Place planter in house with roof resting in "V" groove. Tape assembly to house.

6. Apply glue along right side and front edges of 3rd floor and along both tabbed edges of lg. peak roof assembly. Position on top, inserting tabs into small peak assembly. Check positioning for squareness. Tape until dry.

7. (a) Remove Dormer right & left sides (#9B & C). Apply glue along tabbed edges and to smooth sides of tabs. With longest edge facing out, place in right roof.

(b) Install dormer front (#9L) (previously removed).

(c) Glue on dormer roofs (#9D & E) with tabs in roof notches.

D PORCH RAILINGS & POSTS: 1st FLOOR

BE SURE TO MARK PARTS FOR IDENTIFICATION.

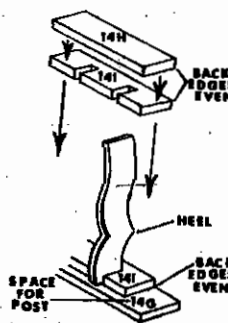
1. (a) Glue notch strip #14I centered on strip #14G making sure that straight (back) edge of both pieces are even.

(b) Glue other notch strip #14I to underside (rough side) of strip #14H, with back edges even.

(c) Place a drop of glue inside each notch. Remove 2 porch railings (#3A) and slide railing bottoms into notches of longer strip (#14I/G). Heel of railing faces back edge.

(d) Similarly position smaller strip (#14I/H) over tops of railings.

(e) NOTE: 1/4" from left front porch floor is embossed guide mark. With longer strip on bottom, install railing assembly along left front (parallel to house) using guide mark for positioning. Back edge of railing faces inside of porch.



2. (a) Similar to above procedure, assemble left side railing using #14O on #14F for bottom and #14K underneath #14F for top. IMPORTANT: Be sure to assemble so that open-ended notch of top & bottom will be on left as illustrated.

(b) Glue 4 railings (#3A) into bottom. Install top.

(c) Install assembly along left porch side, (behind front railing) with open notch end against house.

3. Assemble right front railing using #14M centered on #14E for bottom; and #14M under #14D for top. First install railings #3A at either end of notched strip. Glue top on squarely. Install railings in between. Install assembly between embossed guide marks on right front.

4. Remove one strip #11B (for bottom) and place on table so that the end with a single embossed guide mark is to your right. Glue 2 strips #14N between marks. Glue 2 pcs. #14N under 2 pcs. #14B for tops. Install railings #3A into notches of bottom strip. Glue tops on squarely. Install railings in between. Install assembly along porch side between floor guide marks.

5. Assemble rear railing using #14J on #14A for bottom; and #14J under #14A for top. Glue in railings (#3A) and add top. Install perpendicular to side railing. Be sure parts on Sheet #12 are marked for identification.

6. Apply glue along longest edge of post #12I and butt against back of post #12O, forming a right angle. Apply glue to rough side of reinforced strip #12A and place behind post #12O. Be sure all bottom edges are even. With post bracket pointing towards house, install post with top in left corner slot in 2nd floor. Position bottom on railing strip.

7. Apply glue to rough (back) side of one post #12B and place against back of post #12D, bottom edges even. Install on other end of left front railing.

8. Glue another post #12B in back of post #12H. Install on right front railing.

9. Apply glue on long edge of post #12E. Butt against post #12F forming a right angle. Glue strip #12A behind #12E. Install in right front corner.

10. Glue another post #12B in back of post #12G. Install on porch side.

11. Apply glue on long edge of post #12I. Butt against post #12C forming a right angle. Glue strip #12A behind #12I. Install at rear corner.

E PORCH RAILINGS & POSTS: 2nd FLOOR

Use 1st floor porch railing instructions & illustrations as a reference for this section.

1. Exactly repeat instructions in preceding section D step 2 (a), (b), (c). (Additional railings on #5A). Install along left porch side (2nd fl.), using embossed guide mark.

2. Glue 2 strips #14L on #11C (for bottom), butting ends to either guide mark, as illust.

Glue other 2 pcs. #14L under 2 pcs. #14C (for tops). Glue in end railings #5A and add top. Add remaining railings. Install between guide marks along porch front.

3. Exactly repeat instructions in preceding section D, step 4. (Use #5A railings). Install along side of 2nd fl. porch, using rear guide mark.

4. Repeat instructions in preceding section D, step 5 (use #5A railings). Install along rear of 2nd fl. porch.

5. Glue 2 pcs. #12L together, back to back. Glue this, at a right angle, behind 1 pc. #12K. (#12K pcs. located in previously removed door cut-outs). Install, with #12K facing front, in front right (not left) corner resting on bottom strip.

6. Glue 2 pcs. #12K together, back to back. Install in front left corner, with good side facing outward. Follow this procedure for remaining porch posts (front center, side and rear).

7. Apply glue to tops of all porch posts. Center 5 tops #12M. Next, center 5 smaller caps #12N on tops.

F HOUSE AND ROOF TRIM

Note: Refer to photo for trim placement.

1. (a) Apply glue along bottom edges of scalloped peak trims #9K, 11D, 11G and center on strips #9U, 11E, 11F, respectively. Allow to dry.

(b) Glue scalloped trim along roof tops of small peak, large peak and dormer.

(c) Glue peak spikes #9A to front of scalloped trim.

2. Install on exterior #11K, L and #11M, N horizontally against round windows.

3. Glue strips #11A and #11R along bottom of small and large peak fronts (covering exposed 3rd fl. tabs).

4. Very carefully remove and strip out gingerbread trim #2A, B, C, D. First install B under large peak roof overhang. Then install C to the right of it. Glue on A&D.

5. Note: In steps 5-8, check fit before gluing; sand pieces if necessary. Locate sheet #15: Glue trim #15A on right side of house, top edge butting the overhanging 3rd floor, and even with front edge of house. (Roof braces will later be glued on to this strip). In this manner, continue this line of trim around the entire house using, in order, #15B, N, N, N, E, A.

6. Glue trim #15G vertically to the front of house, with side edge butting left side of 2nd floor porch. See photo.

7. Beginning to the left of vertical trim (#15G) just installed, glue on the following trims around the house (covering exposed 2nd floor tabs) in this order: #15F, N, N, N, E, A.

8. Similar to step #7, install (in order, along base of house) #15T, O, O, O, C, H.

9. Install roof braces #13J (33 pcs) on to trim installed in step 5, butting 3rd fl. overhang. Refer to photo for sugg. spacing.

10. (a) There are 2 layers of exterior trim around doors. First, install 2 wide side trims #15K butting side of doorway. Center top wide trim #15J over side trims.

(b) Center 2 1/4" overlay side trims #15L on each wide trim. Then, glue on 1/4" top trim #15I. (Note: if hinging doors, install overlay trim after hinging).

11. Following procedure in step 10, install exterior trim around side door using #15K, R (3 pcs) & #15L, Q (3 pcs).

12. (a) Face rear of house. Install interior entrance door trim #15M, P (3 pcs).

(b) Install interior side door trim #15M, S (3 pcs.).

13. (a) Gather 2 canopy braces #8A, B, lg. canopy roof #11T and front #11Q. Assemble so that back edges of braces and roof are even. Use canopy front #11Q to judge distance between braces. Install assembly over front window.

(b) Repeat procedure for side door canopy using braces #8A, B, sm. canopy roof #11S and front #11P.

G STAIRCASE

1. From sheet #13 gather staircase sides (K, K), 9 risers (A) and 8 treads (E). Check parts diagram to distinguish between the top and bottom of stairsides. When bottom is held against floor, stair-sides will reach ceiling.

PARTS DIAGRAM

2. Apply glue along front edges of both staircase sides where 1st (bottom) and 9th (top) risers will be located. Position these risers over glued edges (not between sides) to establish proper width of staircase. Install remaining 7 risers.

3. If you want to install staircase as pictured in photo, straight edge of treads go on right side. Be sure that straight edge does not overhang as this side is placed flush against wall. Staircase may be installed facing the opposite direction if you desire. Simply install treads with straight (flush) edge on left stair side. Apply glue to top edges of risers & stairsides. Position 8 treads. Allow to dry.

4. Install staircase back #13B on stair sides, behind top riser, with top edge even.

5. Carefully remove bannister #13D. Install with bottom post on (rounded) overhang of 1st tread. Center handrail strip #13N on bannister, slightly overhanging at bottom.

6. Install staircase in house, under stairwell cut-out.

7. If you installed staircase as pictured in photo, follow directions below. (Otherwise, move railing 13O towards house front). Glue strip #13F on floor along stairwell edge by house rear. Glue strip #13M perpendicular to F. Center railing #13C on F; and #130 on M, with equal space at both ends for posts. Position handrails 13F & 13L on top of railings.

8. Glue 2 pcs. 13G together, back to back. Glue this behind 13P to form post. Repeat this for 2nd post. Install posts at each end of railing 13M. Glue on tops 13H. Center caps 13I on tops.

9. Gather chimney parts #7A, B, C, D, E and #8D. Apply glue to edges on each side and place between chim. front and back (grain direction vertical). Center chim. top and chim. cap on top. Glue chim. into roof slots.

10. Gather fireplace parts #2E, F, G, and #10N, O. Center 2E on front of 2F. Apply glue to one long edge on each side (2G) and install behind 2E at same angle as base. Install on top of base with back edges even. Center top with back edge even.

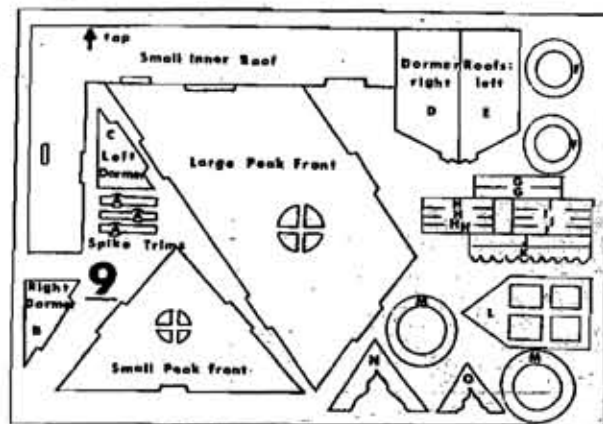
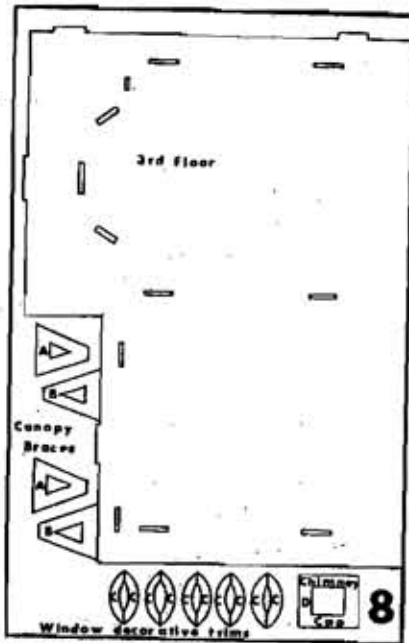
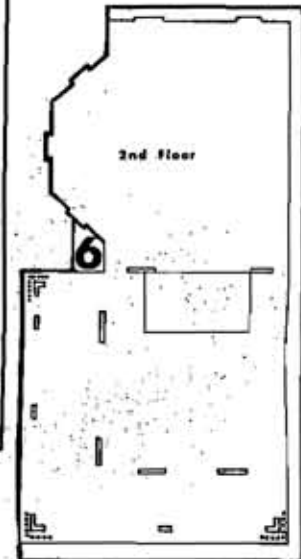
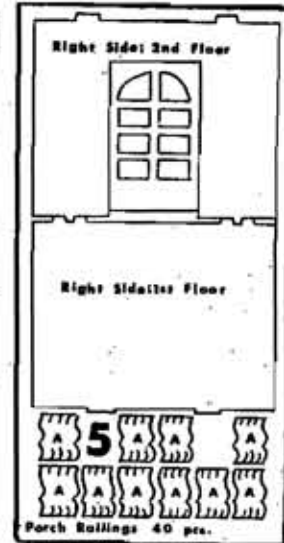
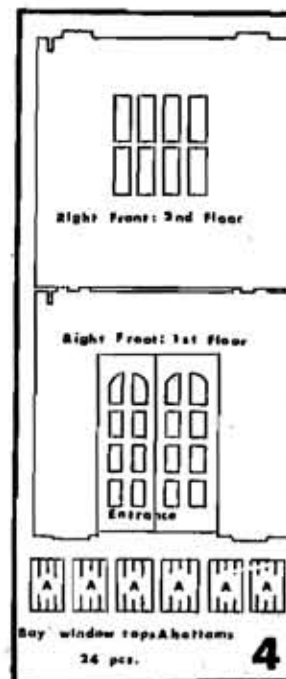
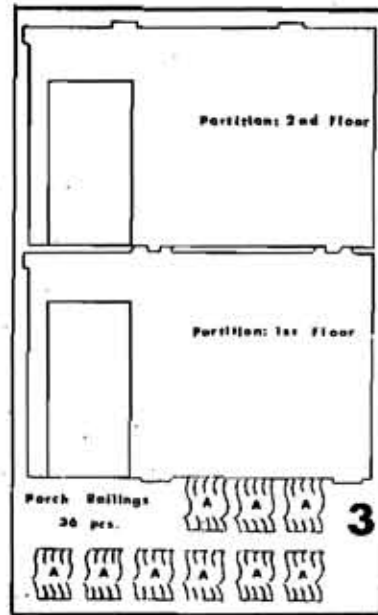
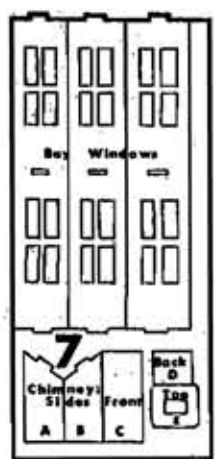
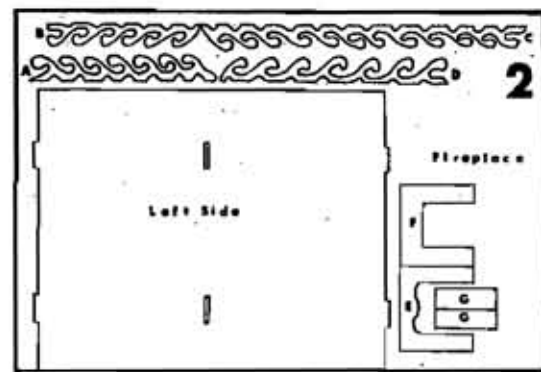
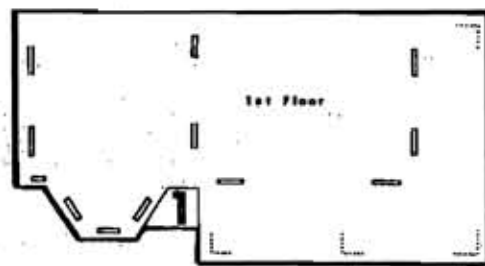
H CHIMNEY AND FIREPLACE

1. Gather chimney parts #7A, B, C, D, E and #8D. Apply glue to edges on each side and place between chim. front and back (grain direction vertical). Center chim. top and chim. cap on top. Glue chim. into roof slots.

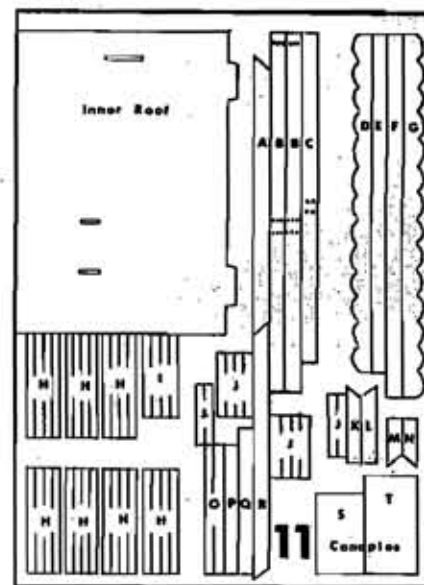
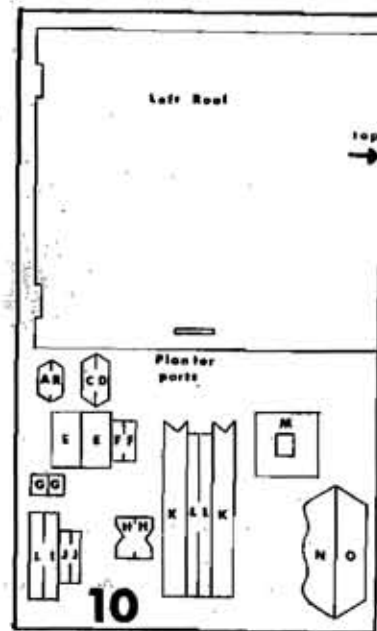
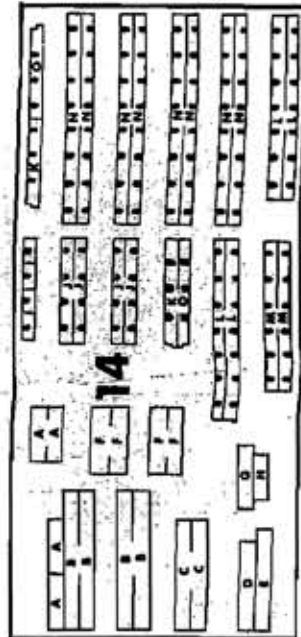
2. Gather fireplace parts #2E, F, G, and #10N, O. Center 2E on front of 2F. Apply glue to one long edge on each side (2G) and install behind 2E at same angle as base. Install on top of base with back edges even. Center top with back edge even.

THANK YOU for choosing our Dollhouse Kit. Ask your dealer about other quality dollhouse kits.

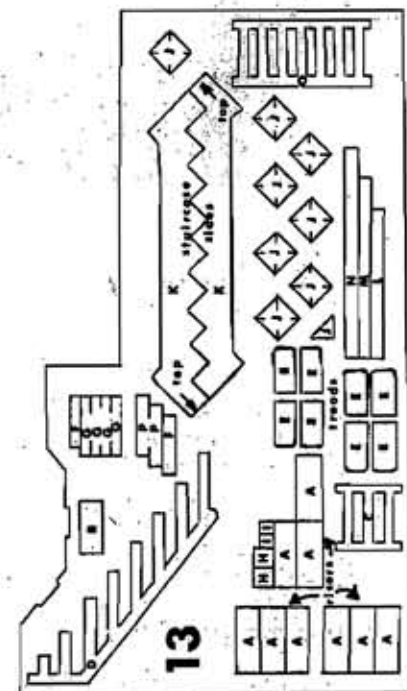
This kit has been carefully inspected before packaging. As with any natural wood product there may occur variations in color, grain properties, etc. If, however, any parts are found to be damaged or missing, we will gladly send to the original purchaser replacement parts upon receipt of written notification within 30 days of purchase. Notification must include your name, address, proof of purchase (customer receipt) and description of part(s) to be replaced.



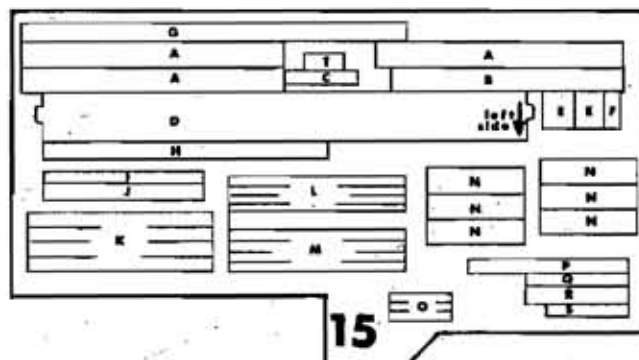
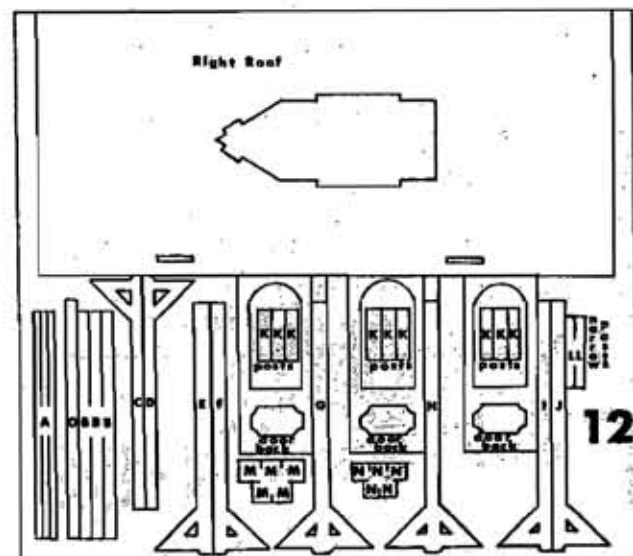
- 9 G Dormer Window Saddle Trim (2 pcs.)
- H Dormer Window Top & Bott. Trim (4 pcs.)
- I Dormer Window Side Trim (4 pcs.)
- J & K Dormer Roof Top Strip & Trim



- 11 B Porch Side Railing Strip (2 pcs.)
- C Porch Railing Strip - 2nd fl.
- H Bay & Lg. Window Side Trim (28 pcs.)
- I Lg. window Top & Bott. Trim (4 pcs.)
- J Bay Window Saddle Trim (12 pcs.)
- O Lg. Window Saddle Trim (2 pcs.)
- P & Q Sm. & Lg. Canopy Fronts



507 Wortman Avenue
Brooklyn, N.Y. 11208



- 13 F Bottom & Handrail Strips (for 13 C)
- G Stairwell Posts (4 pcs.)
- L Handrail Strip (for 13 O)
- M Bottom Strip (for 13 O)
- N Handrail Strip (for 13 D)
- P Stairwell Posts (2 pcs.)

- 15 I Ext. Entrance Overlay Top Trim
- J Ext. Entrance Top Trim
- K Ext. Front & Side Door Side Trim (4 pcs.)
- L Ext. Front & Side Door Overlay Side Trim (4 pcs.)
- M Int. Front & Side Door Side Trim (4 pcs.)
- P Int. Entrance Top Trim
- Q Side Door Overlay Top Trim
- R Ext. Side Door Top Trim
- S Int. Side Door Top Trim

TEMPLATE

#15H

#120

#12B (3 pcs.)

#12A (3 pcs.)

#15T

#13N

#10G
2 pcs.

#15L (4 pcs.)

#10F
(2 pcs.)

#15M (4 pcs.)

#15K (4 pcs.)

#15E
(2 pcs.)

#13M

#10I (2 pcs.)

#15J

#15I

#10E (2 pcs.)

#11Q

#15P

#15P

#15C

#13L

#11H (28 pcs.)

#10J
(2 pcs.)

#12K (9 pcs.)

#12C,F $\frac{9}{16}$

#12L (2 pcs.)

#13F (2 pcs.)

#12E,I $\frac{5}{16}$

#110 (2 pcs.)

#11I (4 pcs.)

#15Q

#11P

#15R

#150 (3 pcs.)

#9G (2 pcs.)

#9I (4 pcs.)

#11J (12 pcs.)

#9H (4 pcs.)

#15S

13P (2 pcs.)

#4A (24 pcs.)

#13G (4 pcs.)