

# INTRODUCTION

Congratulations on your purchase of a Batrie Dollhouse.

Your dollhouse has been precision crafted in Vermont with meticulous care by our craftspeople using only the finest quality materials.

Take your time during assembly and be sure to read the instructions completely before you proceed.

This dollhouse will last for years, even generations, if proper care and attention is given during assembly.

## HELPFUL HINTS

Always read through all assembly instructions before assembling the house.

Do not skip steps. Follow the instructions in the defined sequence.

- a) Arrange pieces in groups ready for assembly. Following the assembly instructions, assemble enough in a dry run to be sure you know ahead of time when and how each part fits. Always be sure of the parts orientation before gluing.
- b) Sand any rough edges or splinters before gluing.
- c) Use generous amounts of glue. Always wipe off excess glue immediately.
- d) Make all joints flush. Keep surfaces and edges square.
- e) Occasional changes in humidity can cause all woods to expand or contract slightly. Always "dry-fit" parts before gluing. Limited sanding or clamping may be required for proper fit.
- f) All Batrie dollhouse kits are inspected before shipment. However, climatic changes and handling during shipment may cause defects.

If this occurs and there is sufficient time for us to replace the part, please contact our Service Department for replacement. Write: Real Good Toys

Customer Service Department  
P.O. Box 706  
Montpelier, VT 05602  
(802) 479-2217

Be sure to include explicit identification and measurements taken directly from the parts list for replacement parts.

Most repairs can easily be made by the kit builder. Warped parts are usually self-straightening during assembly.

- g) A large, clutter-free, well lighted work area is most helpful during assembly.
- h) Before you begin to assemble the dollhouse, it will be helpful to have the following materials handy:

- White glue (Elmers)
- Elastic Bands
- Masking Tape
- Sandpaper (Medium grit)
- Pencil
- Ruler

5 tubes

Use the proper glue such as "Quick Grab" glue for attaching the clapboard siding to plywood wall panels.  
Do not use water-based glue such as Elmer's glue for this purpose.

- i) It will be necessary to use weights when gluing to insure proper adhesion and minimize slippage. Books or other flat household objects work very well as weights in these situations.
- j) Read the instructions carefully, look at the illustrations and photograph on the box, and think the assembly through before you proceed.
- k) Identify and familiarize yourself with all the items in the kit.
- l) Paint all trim and connectors before assembly.

# PARTS LIST

- Instructions
- Bag Shingles
- Die cut stairs(2)
- Die cut front steps

- Panels**
- Base floor 47-7/8 x 23-1/2
  - Second floor 47-7/8 x 23-1/2
  - Third floor 47-7/8 x 23-1/2
  - False bottom 47-1/16 x 19-3/8
  - 2 Divider 10 x 14-1/2 (door)
  - 2 Divider 10 x 15-7/8 (door)
  - 3 Tower sides 10 x 15-3/4 (door)
  - Attic partition 8-3/4 x 15-3/16 (trapezoid)
  - Right roof top 23-7/8 x 12-3/16
  - Right front roof 25-9/16 x 9-1/2
  - Right side roof 15-1/4 x 9 (trapezoid)
  - Left side roof 19-5/16 x 12-3/4
  - Pavilion Right roof 19-5/16 x 13

- Foundation**
- 2 47-5/8 x 1-15/16 with dado
  - 2 19-1/8 x 1-15/16 with dado
  - 6 19-1/8 x 1-13/16
  - 2 4-7/8 x 1-15/16 mitered
  - 1 9-3/4 x 1-15/16 mitered
- Tower**
- Tower ceiling 16-7/8 x 6-11/16
  - 4 Tower low roof 6-1/2 x 2 (trapezoid)
  - 3 Tower upper roof 5-1/4 x 5-7/8 (trapezoid)
  - Tower front roof 5-1/4 x 5-7/8 (trapezoid)
  - Tower top 3-3/8 x 3-7/8

- Pavilion**
- Left triangle(window) 10 x 15-1/8
  - Left triangle(arch) 10 x 15-1/8
  - Right triangle 5-1/4 x 10-1/2
  - Left roof 6-1/2 x 7-7/8 (trapezoid)
  - Right roof 6-1/2 x 7-7/8 (trapezoid)
  - Left front roof 6-3/4 x 9-1/2 (trapezoid)
  - Left roof top 6-7/8 x 12-7/16

- Connectors**
- 4 End cap 10"
  - 8 135° connector 10"
  - 10 90° Connector 10"
  - Turnpost 10"

- Bannister**
- 2 Hand rail 7-3/4 mitered
  - 14 Dowel 2-7/16
  - 15 Dowel 2"
  - 2 Turnpost 3-7/8
  - 4 Turnpost 2-5/8
  - 4 Rail 4-1/2
  - 2 Rail 2-1/8

- Trim**
- 86 eave brackets
  - 32 window brackets
  - 1 round window
  - 1 Round plexi

- Spindles**
- 45 spindles 2"
  - 105 spindles 1"
  - 3 turnpost 2-7/8"
  - 15 turnpost 1-7/8"

- Rails**
- 14 Rail 5-3/16
  - 16 Rail 6-1/2
  - 4 Rail 4-5/8 mitered
  - 4 Rail 4-1/4
  - 2 Rail 3-1/8

- 1/4" Nosing Pack**
- 13 Pieces - detailed listing in instructions
- 3/8" Nosing Pack**
- 21 Pieces - detailed listing in instructions

## Clapboard

(') indicates narrower pieces for panel bottom edge

- |   |     |          |   |     |         |
|---|-----|----------|---|-----|---------|
| 1 | A1  | 20- 9/16 | 7 | F   | 3- 3/16 |
| 1 | A2  | 20- 9/16 | 2 | F'  | 3- 3/16 |
| 1 | A2' | 20- 9/16 | 2 | G'  | 9- 9/16 |
| 2 | B   | 19- 3/16 | 2 | G'  | 9- 9/16 |
| 2 | B'  | 19- 3/16 | 2 | H   | 9- 1/16 |
| 1 | C1  | 18- 5/8  | 2 | H'  | 9- 1/16 |
| 1 | C2  | 18- 5/8  | 1 | I   | 6- 7/16 |
| 1 | C2' | 18- 5/8  | 1 | J   | 6- 3/16 |
| 1 | D   | 15-11/16 | 4 | K   | 7       |
| 1 | E'  | 12- 5/16 | 2 | L   | 5- 1/4  |
|   |     |          | 1 | L3  | 5- 1/4  |
|   |     |          | 1 | L3' | 5- 1/4  |
|   |     |          | 2 | M   | 5       |
|   |     |          | 2 | O   | 4       |
|   |     |          | 1 | O'  | 4       |
|   |     |          | 4 | P   | 3- 3/4  |
|   |     |          | 4 | P'  | 3- 3/4  |
|   |     |          | 8 | R   | 3- 7/16 |
|   |     |          | 2 | S   | 4- 9/16 |
|   |     |          | 1 | S'  | 4- 9/16 |
|   |     |          | 2 | U   | 2- 5/8  |
|   |     |          | 1 | U'  | 2- 5/8  |
|   |     |          | 8 | V   | 15/16   |
|   |     |          | 5 | W   | 1-11/16 |
|   |     |          | 1 | W'  | 1-11/16 |

## Walls

- 2 19- 1/4
- 4 3-13/16
- 2 9- 1/8
- 1 3- 1/4
- 1 4- 5/8
- 1 20- 5/8 1st floor
- 1 20- 5/8 2nd floor
- 1 2-11/16
- 1 4- 1/16
- 2 9- 5/8
- 1 18-11/16 1st floor
- 1 18-11/16 2nd floor
- 1 5- 5/16

## 9 Sets W12K Standard Window. Each Set:

- 2 Sill 2"
- 2 Stile 5"
- Stool Cap 3-1/4
- Pediment 3-1/4
- Plexi 2-1/8 x 4-5/8

## 3 Sets W22K Short Window. Each Set:

- 2 Sill 2"
- 2 Stile 3-1/2
- Stool Cap 3-1/4
- Pediment 3-1/4"
- Plexi 2-1/8 x 3-1/8

## 2 Sets 22K Dormer (Window listed above). Each Set:

- 2 Sides 4 x 1-9/16
- Triangle 4-1/4 x 1-1/4
- Left Roof 2-3/4 x 2-7/8 (trapezoid)
- Right Roof 2-3/4 x 2-7/8 (trapezoid)

## 6 Sets W40K Narrow Window. Each Set:

- 2 Sill 1-3/16
- 2 Stile 5"
- Stool Cap 2-7/16
- Pediment 2-7/16
- Plexi 1-5/16 x 4-5/8

## 3 Sets W30K Double Window. Each Set:

- 4 Sill 2"
- 2 Side stile 5"
- Center stile 5"
- Stool Cap 5-7/8
- Pediment 5-7/8
- 2 Plexi 2-1/8 x 4-5/8

## 2 Sets W31K Bay Frame. Each Set:

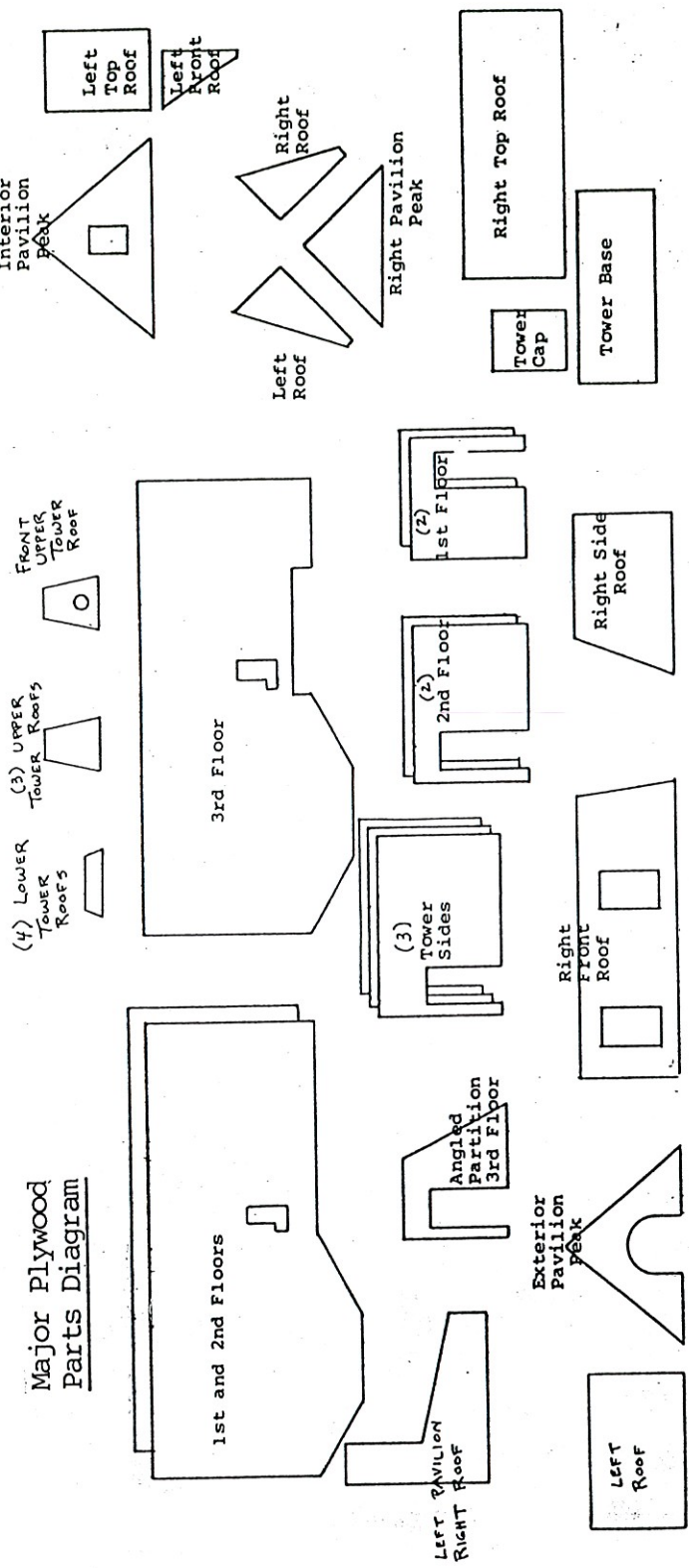
- Roof Block
- 2 Outer wall 5-7/8 x 5/8
- 3 Horizontals(standoffs) 5 x 5/8
- 2 Vertical liners(standoffs) 4-5/8 x 5/8
- 2 Corbels 1/2
- 3 Brackets 1/8

## 2 Sets D11K Door. Each Set:

- Door Panel 6-3/8 x 2-7/16
- 2 Door side 7-1/4
- Door header 2-1/2 drilled
- Door threshold 2-1/2 drilled
- Door pediment 4-3/8 mitered
- Nail 1/2#1
- Nail 1-1/4 #16



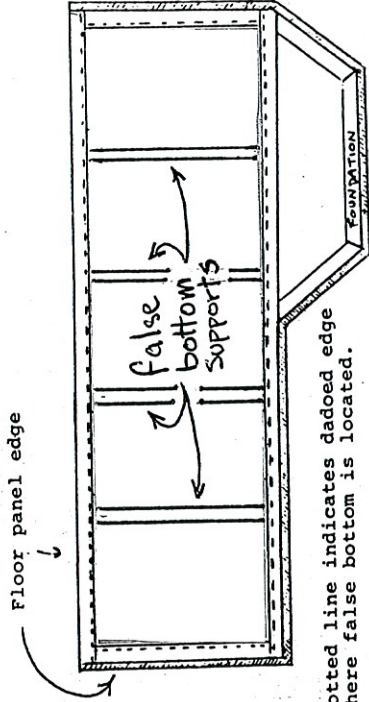
## Major Plywood Parts Diagram



### 1) FALSE BOTTOM ASSEMBLY

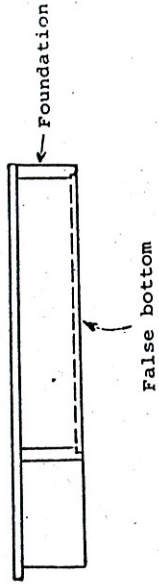
NOTE: The False Bottom allows for easy turntable (T10) mounting and also provides an excellent hidden space for electrical wiring.

- Glue and nail the foundation rectangle using the four strips with dadoed edge. This notch accepts the false bottom.
- Glue and nail the six false bottom supports spacing approximately  $6\frac{1}{2}$ ".
- Screw the false bottom into place so that space may be used in the future.
- Glue and nail entire assembly to bottom of the base floor panel (no stairway hole) flush to the rear edge and centered side to side.
- Glue and tape the remaining foundation pieces in place as shown in the diagram.



Dotted line indicates dadoed edge where false bottom is located.

### SIDE VIEW (from right side)

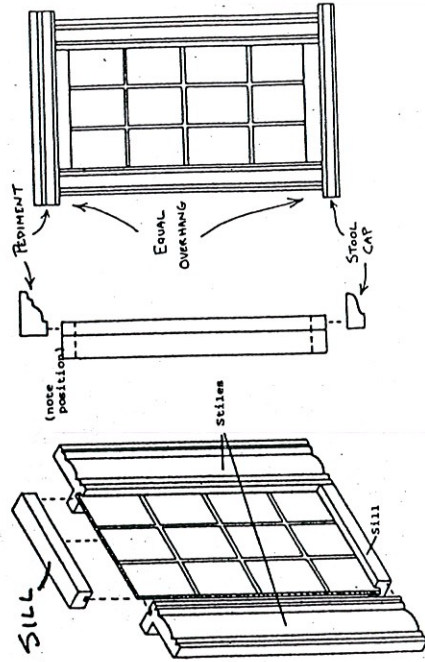


### 2) WINDOW ASSEMBLY

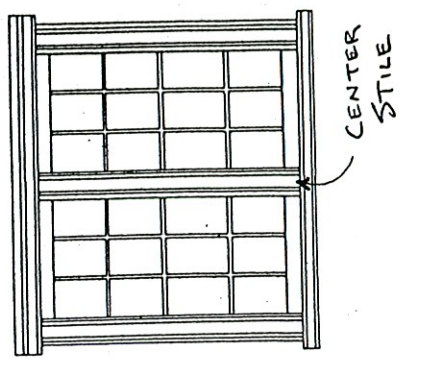
The W12K, W22K and W40K window kits are assembled according to the following procedure:

- Identify and arrange the parts in the kit using the assembly diagram as an aid. Be sure of parts orientation before gluing.
- Put a dab of glue on both sides of the sills. Refer to the Assembly Diagram.
- The plastic window is inserted into the grooves on the vertical stiles, header and sill and pushed into position as shown in the Assembly Diagram.
- Slide the window over the edge of the table and wrap one end with an elastic band, as shown in the Assembly Diagram. Carefully turn the window around and wrap an elastic band around the other end. Check to see that the window is square at the corners. The header and sill should be flush at the top and bottom.
- Let the glue dry and then attach the decorative pediment and stool cap, as shown in the Assembly Diagram.  
NOTE: These parts are not glued flush to the rear of the window frame and should be installed as shown in the Assembly Diagram.
- Allow the window unit to dry thoroughly before using.
- If too tight during assembly sand or file the window opening to fit.
- The three sets of W30K Double Windows have a center stile but follow the same assembly pattern as the other windows.

### WINDOW ASSEMBLY DIAGRAM



### W 30 K DOUBLE WINDOW





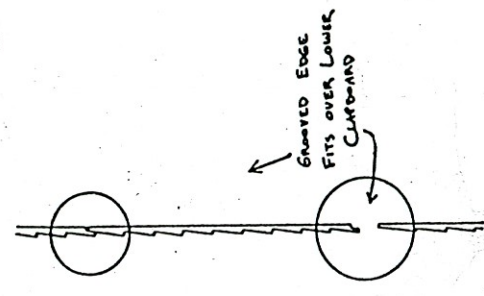
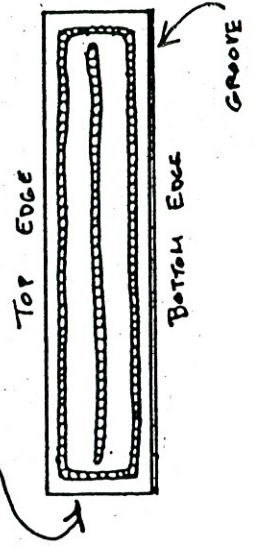
APPLY PRE-CUT CLAPBOARD TO WALL PANELS

- a) This Batic kit includes completely pre-cut Northeastern clapboard siding, designed to precisely fit your individual dollhouse.
- The clapboard siding should be applied to the wall panels prior to assembly. Note the diagram shown here. It shows the layout for the entire house. Lay out the clapboard as shown.
- b) Be sure of clapboard location and fit before gluing. Only "sandpaper accommodations" are necessary for a good fit.
- c) Use the proper glue such as "Quick Grab" and follow the manufacturer's instructions. Do not use a water-based glue. It is very important that this clapboard siding is thoroughly glued. We recommend the gluing pattern shown using enough glue to get full coverage when pressed out on the house. Cleanup is possible with rubber cement solvent.

PLEASE read all instructions and dry fit all parts before opening your glue tube.

- d) Glue the clapboard in place beginning at the bottom edge of each panel. Make sure the clapboard is flush along the entire bottom edge, then finish gluing on clapboard working from bottom to top.
- e) The rounded corners of the routed openings need to be cut square. This is easily done as shown using a sharp knife.

GLUING PATTERN



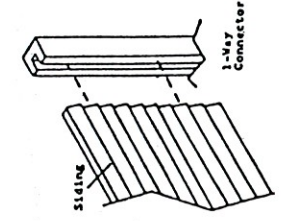
Clapboard

(\*) indicates narrower pieces for panel bottom edge

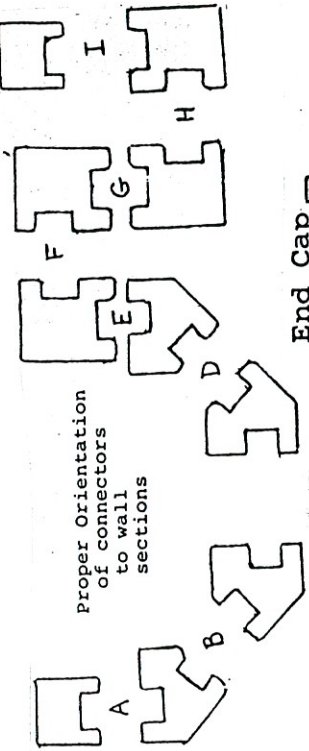
1	A1	20- 9/16
1	A2	20- 9/16
1	A2'	20- 9/16
2	B	19- 3/16
2	B'	19- 3/16
1	C1	18- 5/8
1	C2	18- 5/8
1	C2'	18- 5/8
1	D1	15-11/16
1	D1'	15-11/16
1	E	12- 5/16
7	F	3- 3/16
2	F'	3- 3/16
2	G	9- 9/16
2	G'	9- 9/16
2	H	9- 1/16
2	H'	9- 1/16
1	I	6- 7/16
1	J	6- 3/16
1	K	7
4	L	5- 1/4
2	L3	5- 1/4
1	L3'	5- 1/4
2	M	5
2	O	4
4	O'	4
1	P	3- 3/4
4	P'	3- 3/4
4	R	3- 7/16
8	R	4- 9/16
2	S	4- 9/16
1	S'	4- 9/16
2	U	2- 5/8
2	U'	2- 5/8
1	V	15/16
8	W	1-11/16
5	W'	1-11/16
1		1-11/16

4) ASSEMBLE HOUSE BODY

- a) Following the diagram showing the proper orientation of connectors and wall sections, assemble these parts without glue (dry-fit) in position on the base floor. Use masking tape (dry-fit) is flush at rear and evenly spaced side to side. Pay particular attention to the position of all 2-way connectors. See diagram.



Proper Orientation of connectors to wall sections



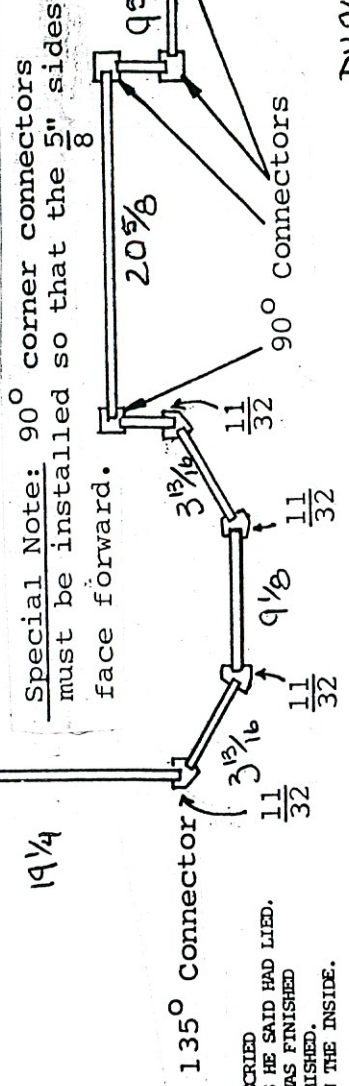
- 1. Wall section E for 1st floor is 4-5/8".
- 2. Wall section G for 1st floor is 4-1/16".
- 3. Distance from wall section E to front 90° connector surface should be 20 3/8". This is the overall length of the porch rail assembly.
- 4. Test the distance from rear edge of the house to the clapboard section F with 14 3/4" 1st floor divider.
- b) When satisfied with this assembly trace outline. Then starting at one end reassemble with glue.

- c) Glue 2nd floor panel in place evenly spaced. Use weight and tape. Make sure rear edge of end wall sections are flush at rear, and that everything is set square.
- d) Assemble the 2nd floor wall sections in the same manner. This time use 15-7/8" divider to test distance from rear edge to wall section F. Stand back from your house and check to see that all connectors line up.
- e) Glue 3rd floor panel in place, as in step (c) above.

End Cap

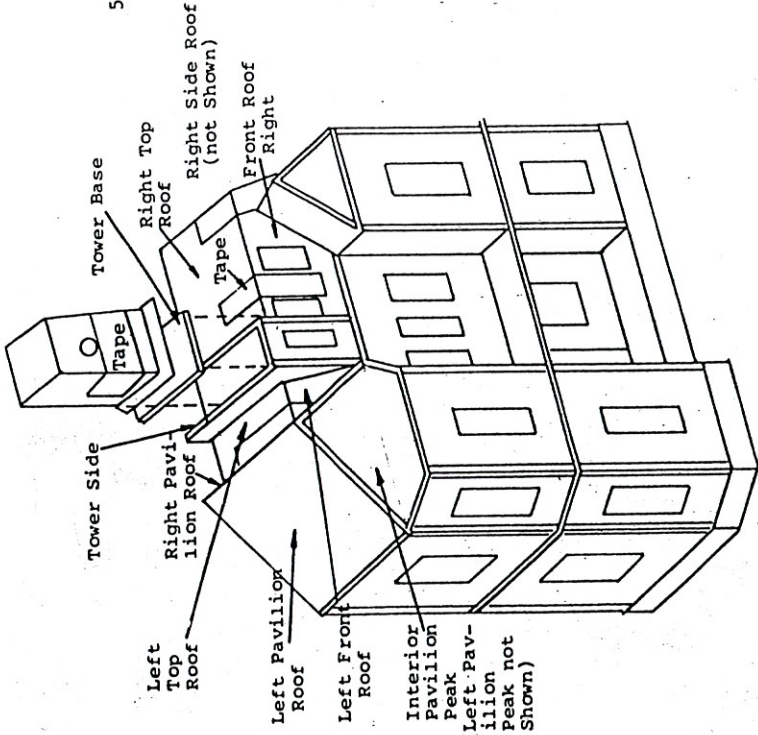
Top View

Wall Assembly Plan - 1st and 2nd Floors



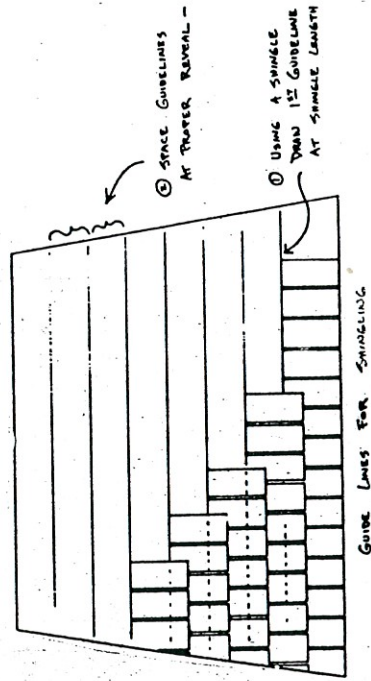
AN IRATE CUSTOMER DECRIED DOLLHOUSE DIRECTIONS HE SAID HAD LIED. WHEN HIS DOLLHOUSE WAS FINISHED IT SEEMED TO BE BLEMISHED. THE CLAPBOARD WAS ON THE INSIDE.





5) ASSEMBLY OF TOWER ROOM

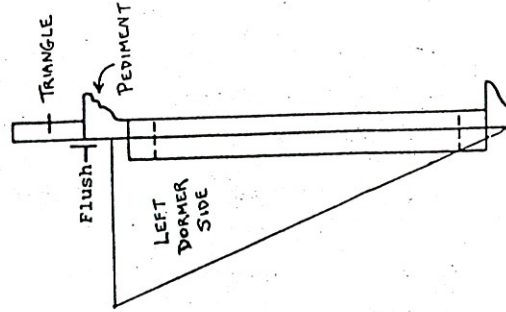
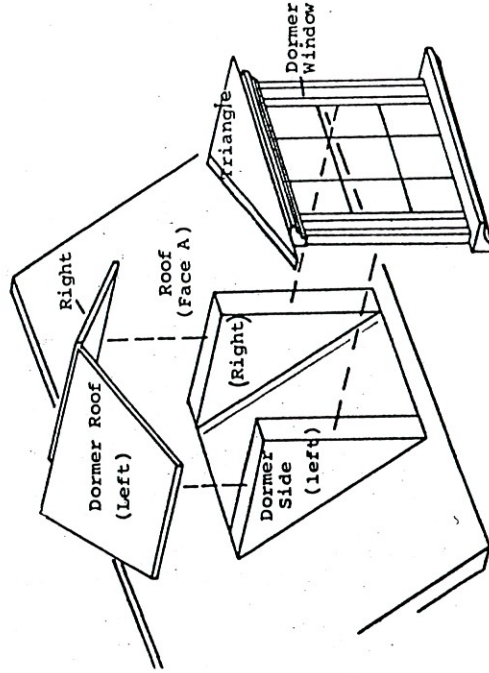
- a) Assemble tower room using two tower side panels, two 90° connectors and tower front.
- b) Position the tower room. The right tower side panel should be flush with the edge of the stairway opening and flush with the rear edge of the floor panel.  
**IMPORTANT!** Lay a divider flat on the 3rd floor flush with rear edge of the floor for final positioning of the walls.
- c) Attach tower ceiling flush at rear centered side to side.
- d) Glue and tape together the lower tower floor assembly. Front and rear panels overlap sides.
- e) Glue and tape together the upper tower roof assembly. Front and rear panels overlap sides.
- f) Glue and tape the upper and lower sections together as shown while the glue is still tacky. Make sure the bottom edge of assembly is flat and square.
- g) Glue tower roof assembly in place on top of the tower ceiling centered above the walls of the tower room.  
**NOTE:** Window opening faces front.
- h) The tower top and the round window may be glued in place after shingling.



Do not use water soluble glue for shingling.  
The wooden shingles will warp! Panel adhesive or Quick-grab glue work well.

6) ROOF ASSEMBLY

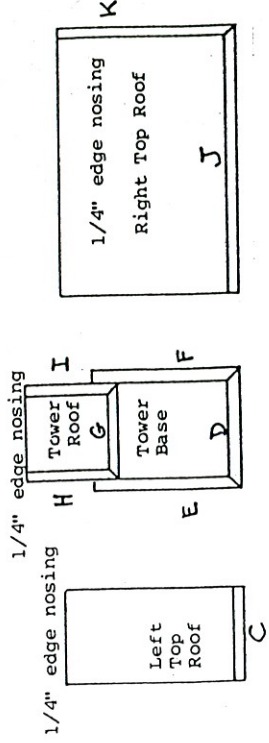
- a) **Shingling Preparation:**
  1. This is the easiest time to draw guidelines for locating shingles on the roof panels, before roof assembly. The 1st guideline on all panels to be shingled should be drawn 1 1/2" (shingle length) from the bottom edge.
  2. The rest of the guidelines for any given panel will be spaced as described in the following steps 4-8.
  3. Pay particular attention that the guidelines are drawn on the outside of all roof panels.
  4. Space 15/32" on the right side roof.
  5. Space 1" on the right front and left front, and the Pavillion front triangles. These triangles are most easily shingled NOW. Water soluble glue may cause warpage. We use quick-grab glue.
  6. Space 1-5/32" on the left Pavillion roofs. Note that the sharper bevel of the left roof is the bottom edge.
  7. Space 1-5/16" on the right Pavillion roofs.
  8. Space 1" all around on the Tower roof.
- b) **Preassemble the left Pavillion**
  1. Tape and glue the left and right roof. The L-shaped right roof overlaps the left roof, and the ends are flush.
  2. Glue the left Pavillion window triangle in place 4" from front edge. Let this entire assembly dry.
  3. Glue arched Pavillion triangle in place leaving a 5/8" eave.
- c) **Preassemble the right Pavillion.**
  1. Tape and glue left and right roofs. This is a mitered joint meeting at the peak.
  2. Glue the right Pavillion triangle in place leaving a 5/8" eave. Let dry.
- d)
  1. Tape attic partition to the right tower side, flush at rear.
  2. Glue and tape the right front and right side roofs together. Front roof overlaps side roof. DO NOT allow to dry.
  3. Immediately glue and tape this assembly in place to tower side and 3rd floor. After position is secured remove attic partition.
- e)
  1. Tape attic partition to left tower side.
  2. Glue the left Pavillion assembly in position using the left front roof as a spacer.
  3. Immediately glue and tape the left front roof in position.
  4. Immediately glue and tape the left roof top in position. After this entire assembly is secure remove the attic partition.
  5. The right roof top should not be glued until shingling is complete.
  6. Glue and tape right Pavillion in position.



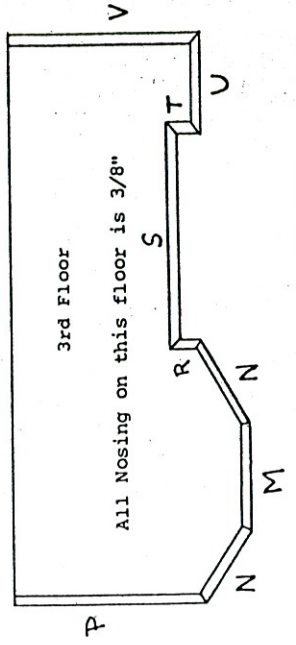
7) ASSEMBLE DORMERS

- a) Glue dormer triangle on top of W22K window assembly (9-pane window). Back of triangle is flush with back edge of pediment, centered side to side.
- b) Glue dormer sides to window assembly flush at sides and flush at bottom edge.
- c) Attach this assembly to roof. Trim the bottom corners of dormer openings for proper fit. Glue, let dry.
- d) Attach the left and right dormer roofs simultaneously.

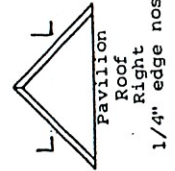
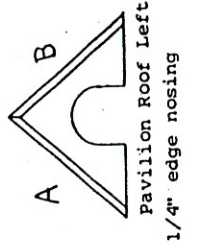
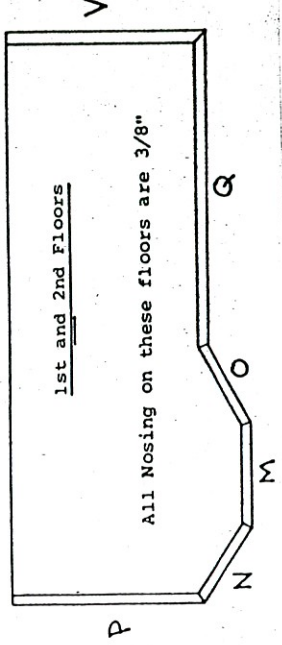




# Pieces	Location	Overall Length of Parts	Left Miter	Right Miter	Length of Applied Edge
1	B	13 5/16 *	37°	53°	13"
1	A	13 5/16 *	53°	37°	13"
1	E	17-3/16	90°	45°R	16-7/8
1	F	17-3/16	45°L	90°	16-7/8
1	D	7-5/16	45°L	45°R	6-11/16
1	C	6-7/8	37°	90°	6-7/8
1	J	24"	90°	45°R	23-7/8
1	K	12-1/2	45°L	90°	12-3/16
2	L	8 *	45°	45°	7-7/8
1	I	4-1/4	45°L	90°	3-7/8
1	H	4-1/4	90°	45°R	3-7/8
1	G	4"	45°L	45°R	3-3/8

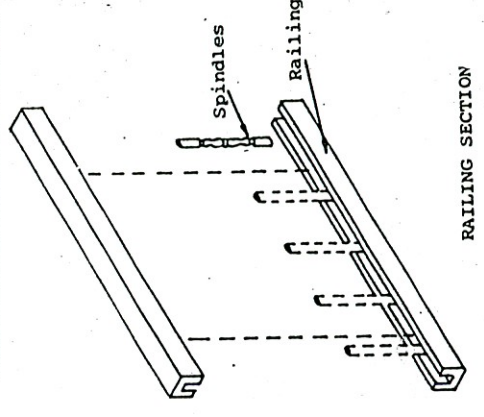
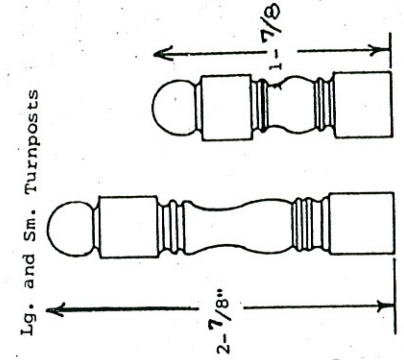


# Pieces	Location	Overall Length of Parts	Left Miter	Right Miter	Length of Applied Edge
3	P	20-1/4	90°	22-1/2°R	20"
4	N	5-1/2	22-1/2°L	22-1/2°R	4-7/8
3	M	10-1/2	22-1/2°L	22-1/2°R	9-15/16
2	O	5-3/16	22-1/2°L	22-1/2°L	4-15/16
1	R	3-1/2	22-1/2°L	45°L	3-1/4
1	S	19-1/2	45°R	45°L	19-1/2
1	T	3-9/16	45°R	45°R	3-3/16
1	U	12-1/4	45°L	45°R	11-1/2
2	Q	31-3/8	22-1/2°R	45°R	31"
2	V	20-3/8	45°L	90°	20"

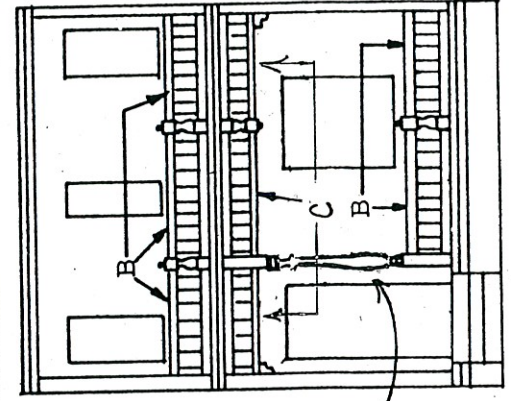
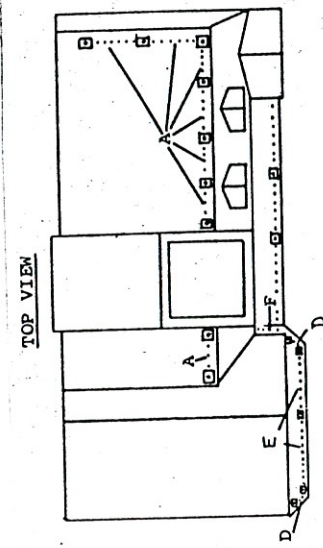


12) POST AND RAILING ASSEMBLY

- All the rail assemblies should now be assembled. Use the illustrations to identify the proper orientation of rail assemblies.
- For each pair of railings mark location of spindles every 3/4"
- Apply a dab of glue to the bottom of each spindle and install as shown.  
Be sure all spindles are perfectly upright and perpendicular. Install the top railing only after the spindles have dried.
- After all the railing sets have been completed install them into position on the dollhouse.  
Use Diagram for correct orientation. The turnposts are installed by merely applying a dab of glue to the bottom of each post.



Units	Location	Length of rail	# Spindles	Length of Spindle
7	A	5 3/16	6	1"
5	B	6 1/2	7	2"
3	C	6 1/2	7	1"
2	D	4 5/8 mitered	5	1"
2	E	4 1/4	5	1"
1	F	3 1/8	3	1"

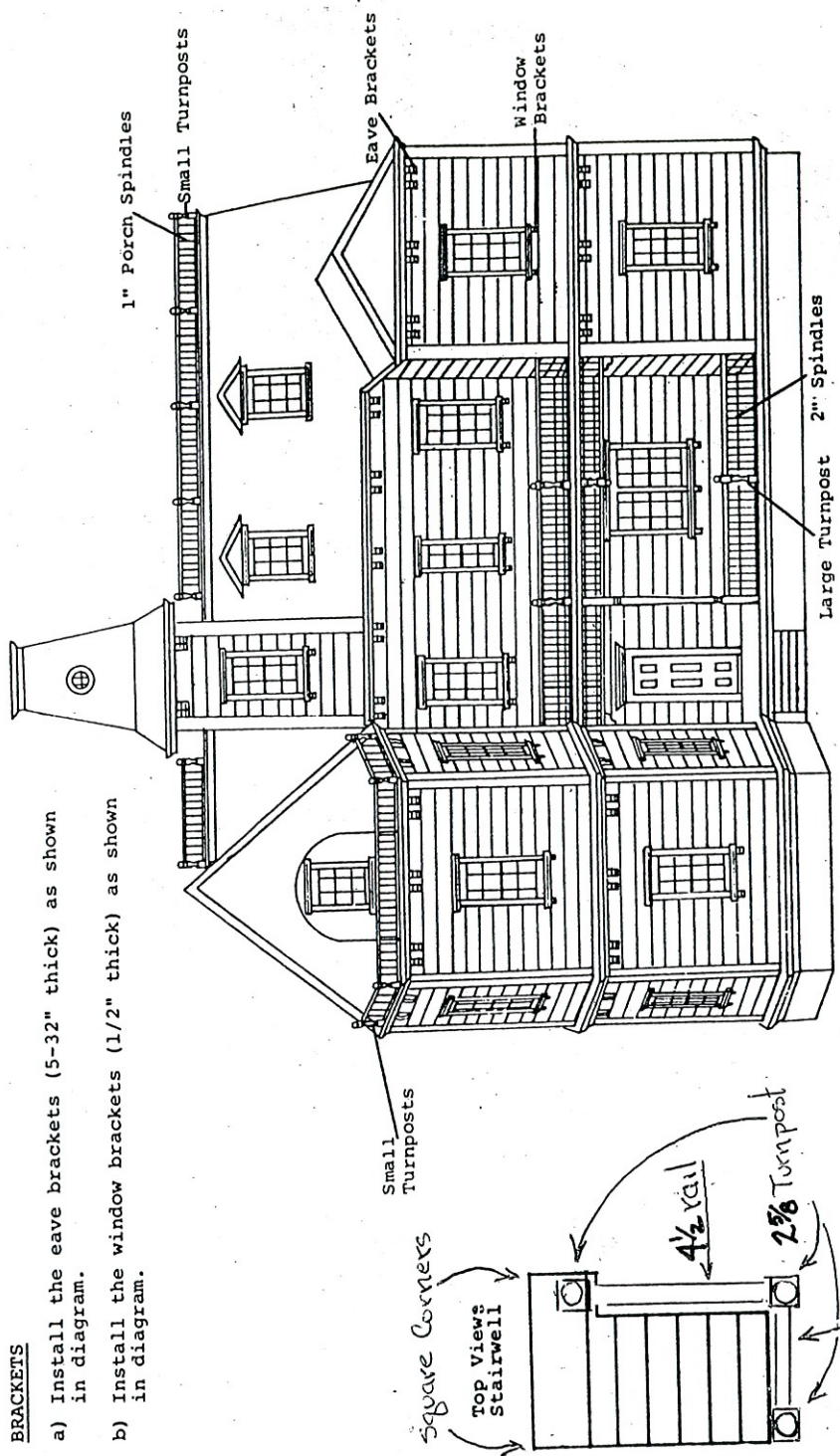


2-7/8" Post - 2" Spindles  
1-7/8" Post - 1" Spindles  
2-7/8" Post - 2" Spindles

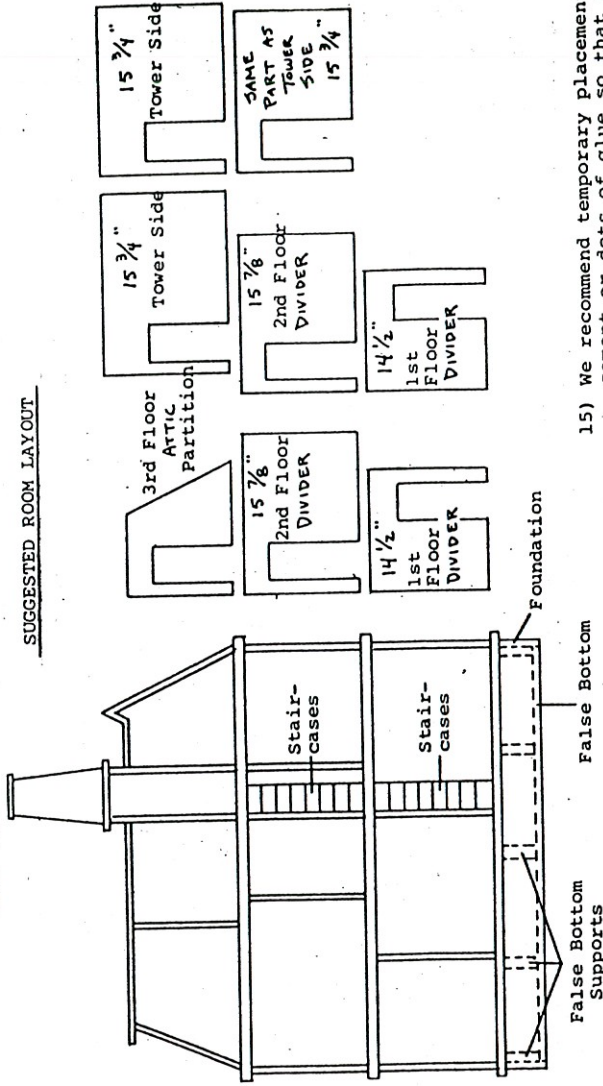
10" Post

13) BRACKETS

- a) Install the eave brackets (5-32" thick) as shown in diagram.
- b) Install the window brackets (1/2" thick) as shown in diagram.



BACK VIEW



15) We recommend temporary placement of dividers, using rubber cement or dots of glue so that they can be easily removed for interior decoration. See diagram.

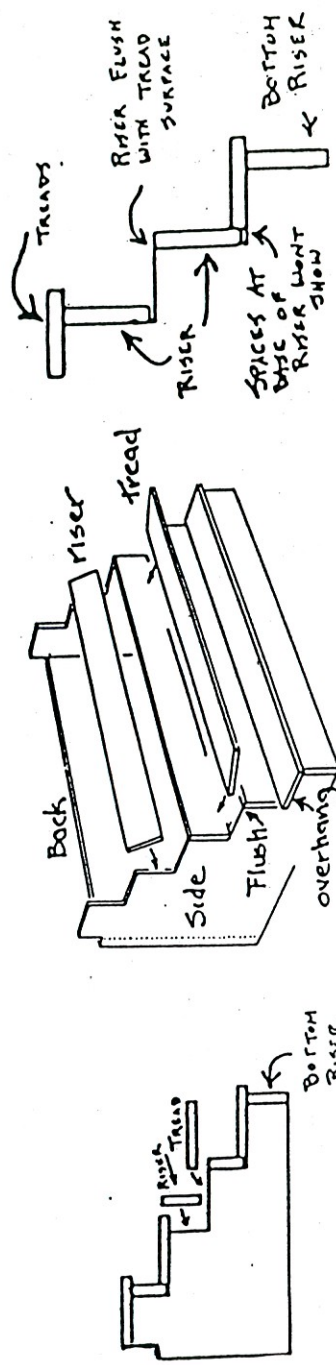


17) SHINGLE THE ROOF

- a) Wood shingles provided are enough to cover all roof surfaces except the left and right top roof.
- b) See step 6(a) for proper shingle spacing.
- c) Where two roof panels meet shingle the side roof first. Let shingles overlap the corner, then trim from bottom to top. Then shingle front roof.

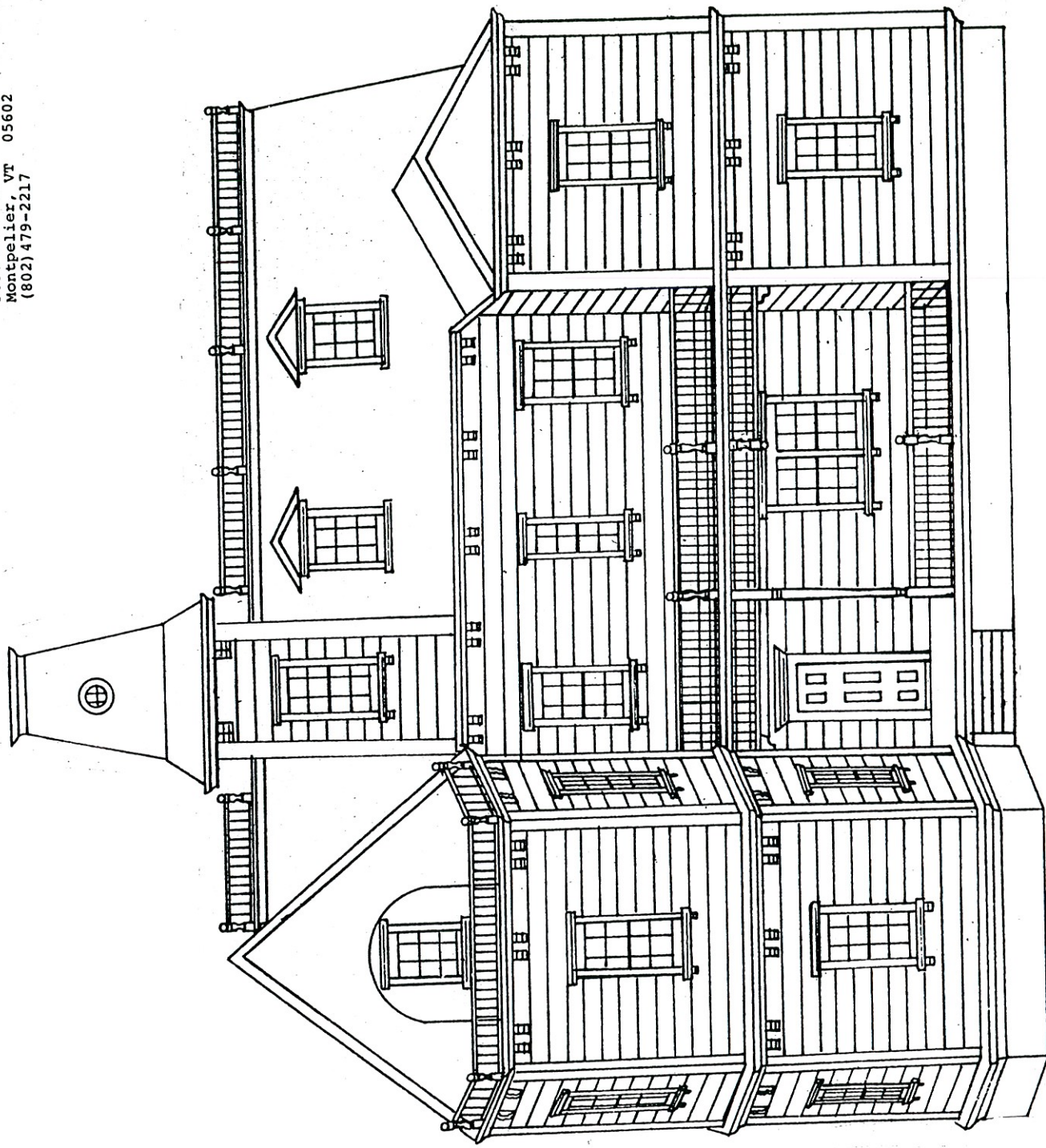
Front Step Assembly

- Parts in die cut sheet:  
 left and right stair side  
 stair back 4-3/8 x 1-3/4  
 5 risers 4-11/16 x 1/2  
 5 treads 4-7/8 x 13/16  
 2 trim strips 1-3/4 x 3/8



- A. Punch out parts. Sand the edges of the treads. Extra smoothness may be achieved by spreading glue on the edges and sanding wet.
- B. Glue the back between the sides- flush at the back and bottom corner. Make sure the sides sit square to the work surface and the back panel. Let dry.
- C. Glue risers in place flush with the sides at the tread surface and flush with the sides at the risers' ends. Let dry.
- D. Glue sanded treads in place centered left and right.
- E. Top tread and trim strip should be glued to steps while they are in place on the house for a perfect fit.

We hope you enjoy your new Batris dollhouse, manufactured by Real Good Toys. Call or write if you have any problems with this dollhouse kit.  
 P.O. Box 706  
 Montpelier, VT 05602  
 (802)479-2217





DH-96K Deluxe Stairs & Railings

Stair Pack:

- (2) Stairbacks (1/4) 12 3/8" x 3"
- (22) Stair Treads 3"

Bannister Pack:

- (2) Handrail - 9"
- (15) 1/8 dowel - 2 7/16"
- (15) 1/8 dowel - 2"
- (2) Turnpost - 3 1/4"
- (4) Turnpost - 2 7/8"
- (2) Rail - 4 1/2"
- (2) Rail - 2 1/8"
- (1) Top bevel rail - 3"
- (1) Bottom bevel rail - 4 5/16"

1. Layout the plywood stairbacks with the smaller side down. Note that the end with the acute (more pointed) bevel will be the top end of the stairs. (ill #1)
2. Glue on the treads, starting at the top edge, 11 treads per set. Adjust the tread fit and squareness before letting the glue dry.
3. Square the corners of the house floor stair holes. Use a sharp craft knife or file, and work from both surfaces toward the center to avoid "splitout". (ill #2)
4. Glue the railing assemblies together, using pairs of rails and the 2" dowels, spacing the dowels about 3/4" apart. Check that the railings are square on the ends and that the dowels are straight as the glue dries. (ill #3)
5. Test, then install the stair assembly.
6. Glue one bannister dowel (2 7/16") to each stair tread spaced about 1/8" from the edge, touching and glued to the front of the next-higher tread. Check to be sure dowels are straight and in line as the glue dries.
7. Spread a little glue in the groove of the handrail, and dab glue on the upper (blunter) end. Wiggle and slide the bannister onto the dowels and into position with the end touching the bottom of the next-higher floor.
8. Pinch the top end of each dowel into the groove of the bannister to ensure a good fit. Glue a 3 1/4" turnpost to the floor and lower end of each hand rail.
9. Install the landing rail sets as shown.

